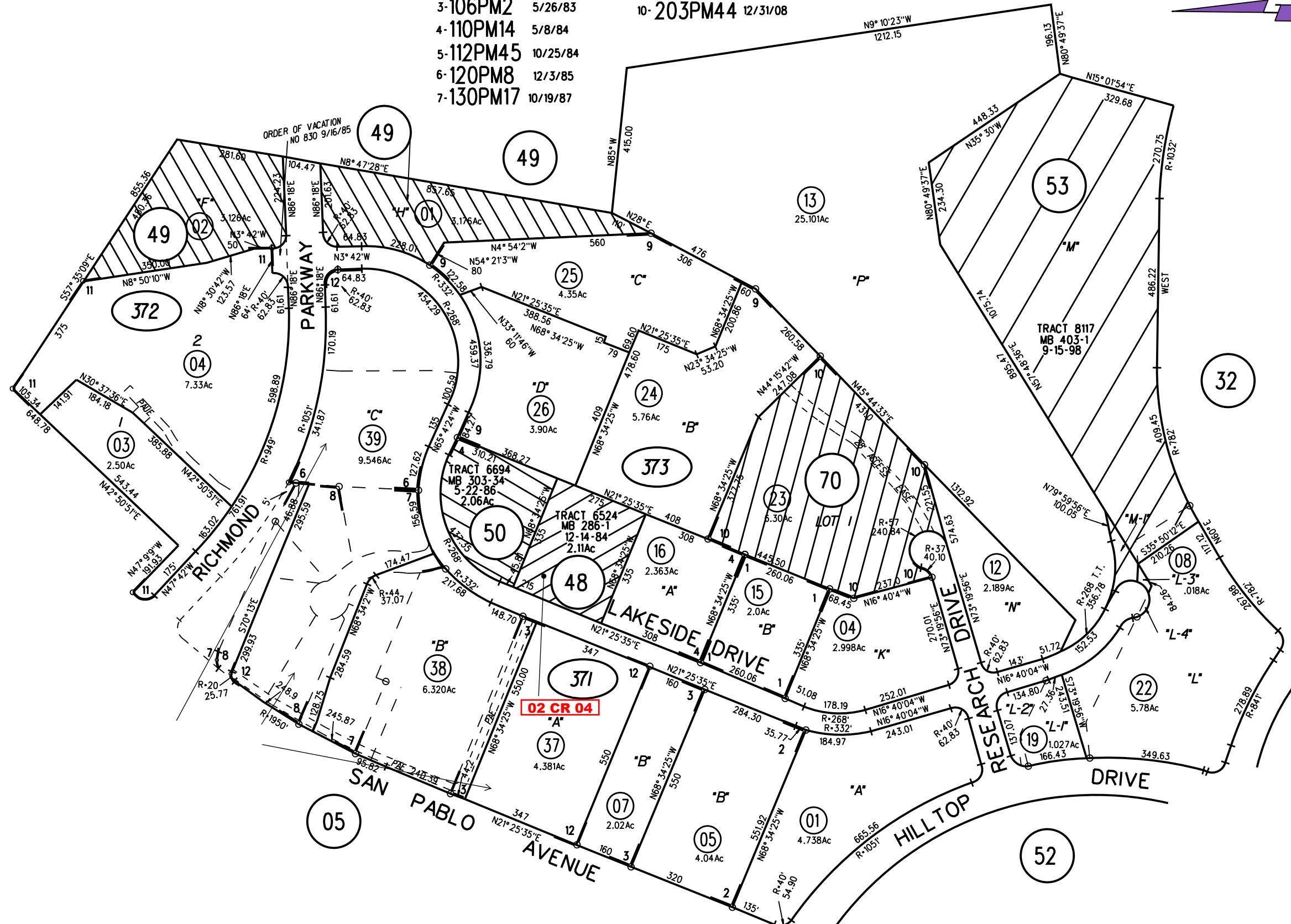
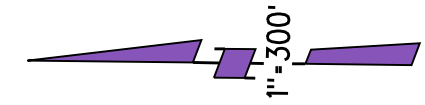


- 1- 105PM33 4/29/83
- 2- 105PM35 4/29/83
- 3- 106PM2 5/26/83
- 4- 110PM14 5/8/84
- 5- 112PM45 10/25/84
- 6- 120PM8 12/3/85
- 7- 130PM17 10/19/87
- 8- 142PM38 10/4/89
- 9- 168PM39 2/23/96
- 10- 203PM44 12/31/08
- 11- 211PM46 12/21/16
- 12- 213PM10 11/17/17



NOTE: THIS MAP WAS PREPARED FOR ASSESSMENT PURPOSES ONLY. NO LIABILITY IS ASSUMED FOR THE ACCURACY OF THE INFORMATION DELINEATED HEREON. ASSESSOR'S PARCELS MAY NOT COMPLY WITH LOCAL LOT SPLIT OR BUILDING SITE ORDINANCES.

- 371 213 PM10 11/17/17
- 372 ○
- 373 ○