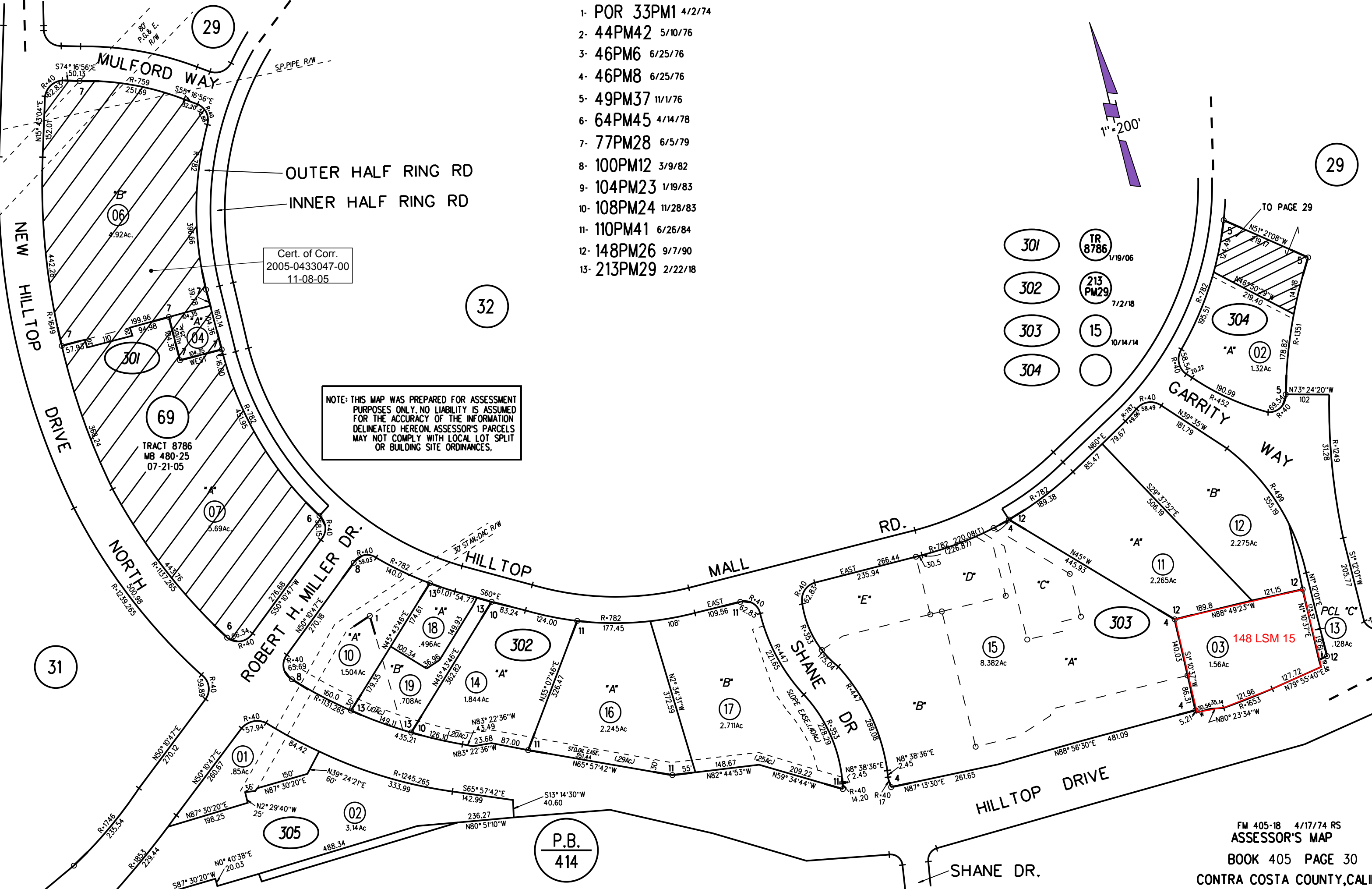
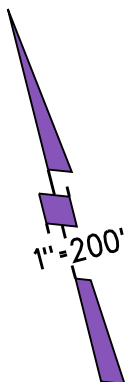


- 1- POR 33PM1 4/2/74
- 2- 44PM42 5/10/76
- 3- 46PM6 6/25/76
- 4- 46PM8 6/25/76
- 5- 49PM37 11/1/76
- 6- 64PM45 4/14/78
- 7- 77PM28 6/5/79
- 8- 100PM12 3/9/82
- 9- 104PM23 1/19/83
- 10- 108PM24 11/28/83
- 11- 110PM41 6/26/84
- 12- 148PM26 9/7/90
- 13- 213PM29 2/22/18



Cert. of Corr.
2005-0433047-00
11-08-05

NOTE: THIS MAP WAS PREPARED FOR ASSESSMENT PURPOSES ONLY. NO LIABILITY IS ASSUMED FOR THE ACCURACY OF THE INFORMATION DELINEATED HEREON. ASSESSOR'S PARCELS MAY NOT COMPLY WITH LOCAL LOT SPLIT OR BUILDING SITE ORDINANCES.

- 301 TR 8786 1/19/06
- 302 213 PM29 7/2/18
- 303 15 10/14/14
- 304