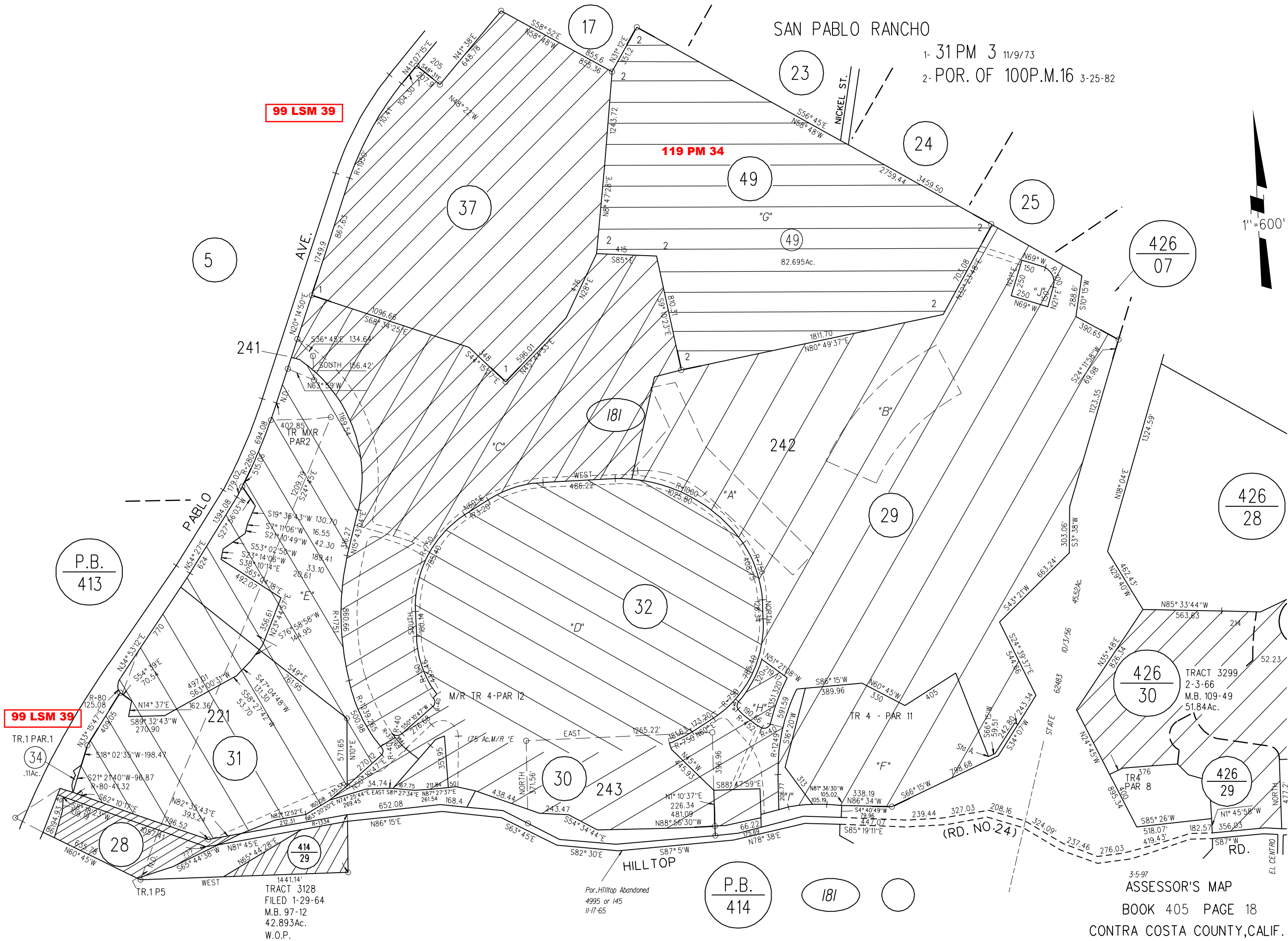


SAN PABLO RANCHO

1- 31 PM 3 11/9/73  
2- POR. OF 100P.M.16 3-25-82



99 LSM 39

119 PM 34

99 LSM 39

P.B.  
413

P.B.  
414

TRACT 3128  
FILED 1-29-64  
M.B. 97-12  
42.893Ac.  
W.O.P.

3-5-97  
ASSESSOR'S MAP  
BOOK 405 PAGE 18  
CONTRA COSTA COUNTY, CALIF.