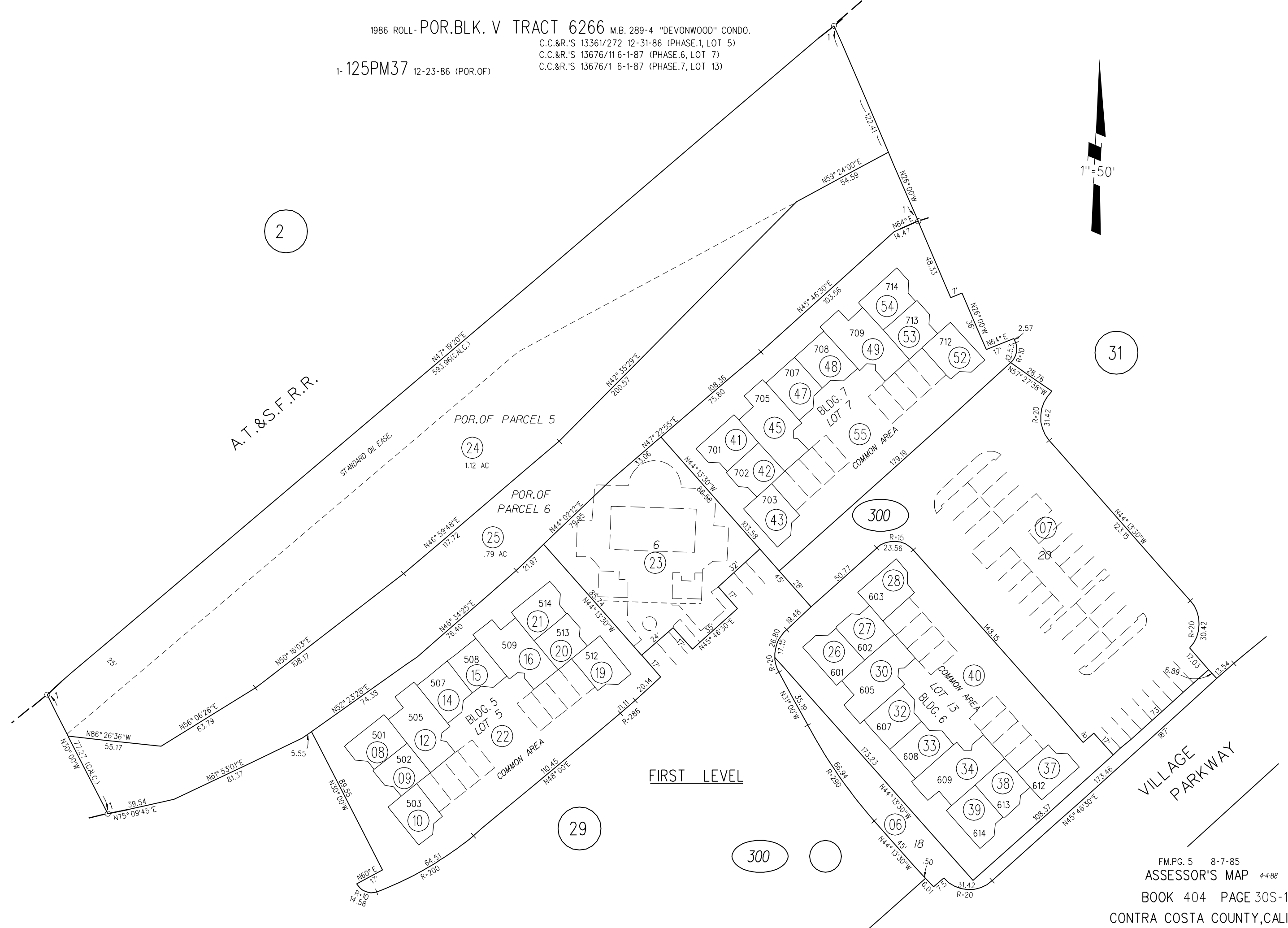


1986 ROLL - POR.BLK. V TRACT 6266 M.B. 289-4 "DEVONWOOD" CONDO.
C.C.&R.'S 13361/272 12-31-86 (PHASE.1, LOT 5)
C.C.&R.'S 13676/116-1-87 (PHASE.6, LOT 7)
C.C.&R.'S 13676/1 6-1-87 (PHASE.7, LOT 13)
1-125PM37 12-23-86 (POR.OF)



2

31

29

300

300

FIRST LEVEL