

1- 125PM37 12-23-86 (POR.OF)

C.C.&R.'S 13397/224 1-21-87 (PHASE.2, LOT 1)
C.C.&R.'S 13457/76 2-19-87 (PHASE.3, LOT 2)
SUPPL. C.C.&R.'S 13542/748 3-13-87 (PHASE.4, LOT 3)
DECLARATION OF ANNEXATION C.C.&R.'S 13544/243 3-31-87 GLENWOOD AT VILLAGE Park (phase.7.)
SUPPL. C.C.&R.'S 13553/327 4-3-87 (PHASE.5, LOT 4)

2

30



A.T.&S.F.R.R.

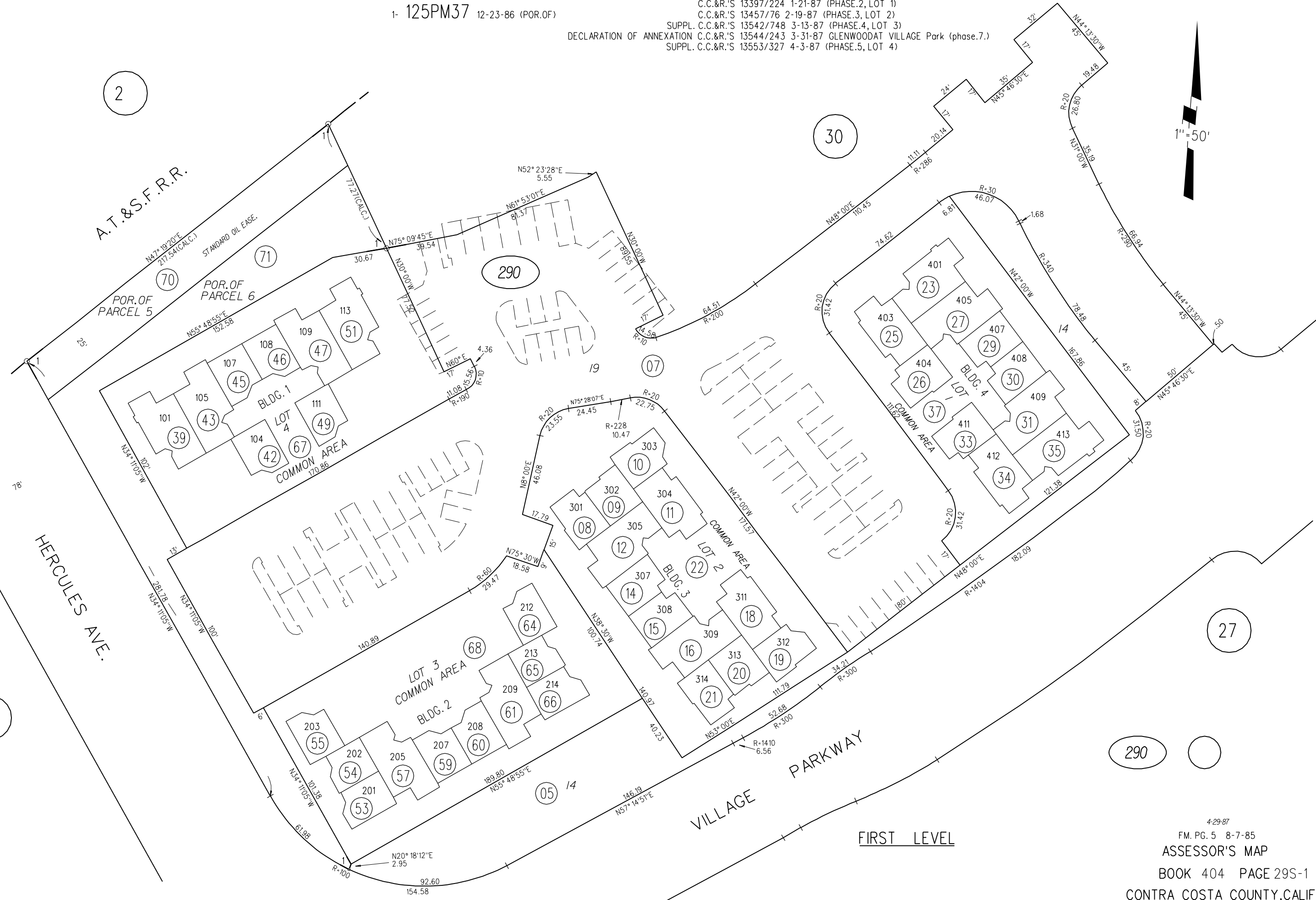
POR. OF PARCEL 5

POR. OF PARCEL 6

HERCULES AVE.

VILLAGE PARKWAY

FIRST LEVEL



19

27

290

4-29-87

FM. PG. 5 8-7-85

ASSESSOR'S MAP

BOOK 404 PAGE 29S-1

CONTRA COSTA COUNTY, CALIF.