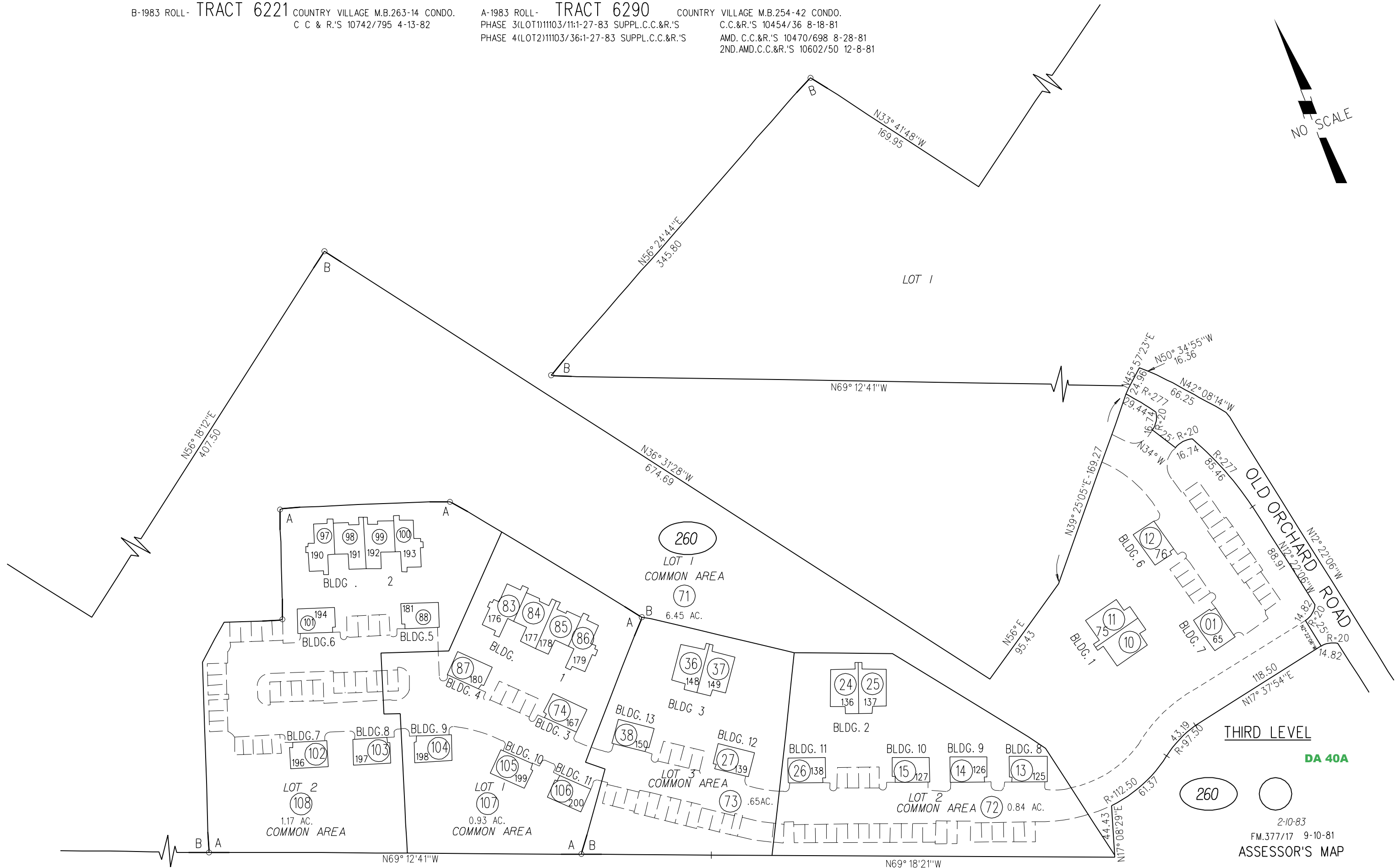
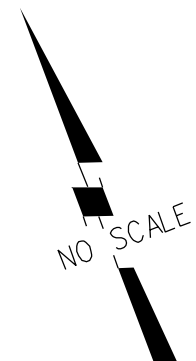


B-1983 ROLL- TRACT 6221 COUNTRY VILLAGE M.B.263-14 CONDO.
C C & R.'S 10742/795 4-13-82

A-1983 ROLL- TRACT 6290 COUNTRY VILLAGE M.B.254-42 CONDO.
PHASE 3(LOT1)11103/11:1-27-83 SUPPL.C.C.&R.'S
PHASE 4(LOT2)11103/36:1-27-83 SUPPL.C.C.&R.'S

C.C.&R.'S 10454/36 8-18-81
AMD. C.C.&R.'S 10470/698 8-28-81
2ND.AMD.C.C.&R.'S 10602/50 12-8-81



THIRD LEVEL
DA 40A



2-10-83
FM.377/17 9-10-81
ASSESSOR'S MAP
BOOK 377 PAGE 26S-3
CONTRA COSTA COUNTY, CALIF.