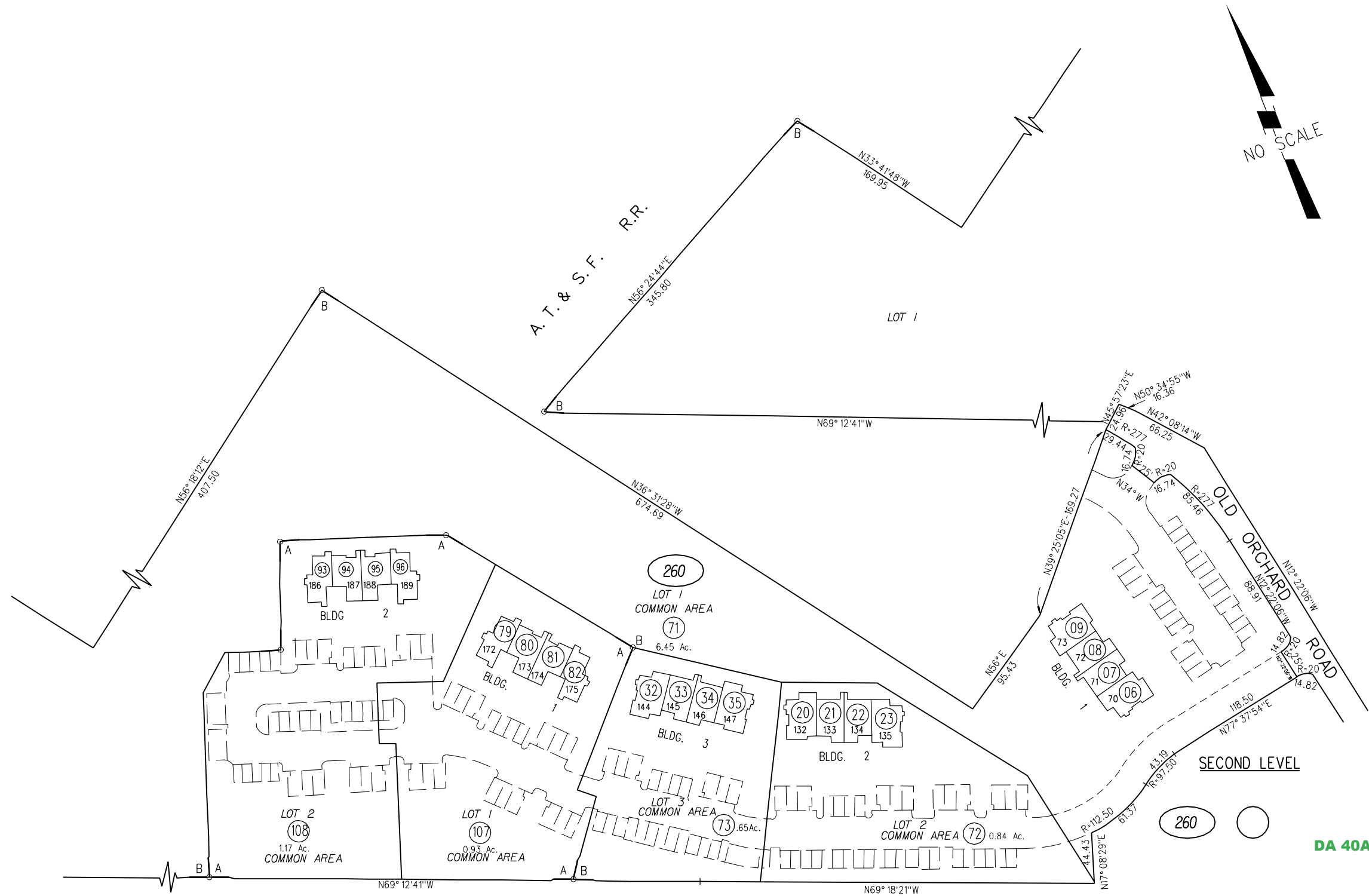


B-1983 ROLL- TRACT 6221 COUNTRY VILLAGE M.B.263-14 CONDO.
C C & R.'S 10742/795 4-13-82

A-1983 ROLL- TRACT 6290 COUNTRY VILLAGE M.B.254-42 CONDO.
PHASE 3(LOT1)11103/11 1-27-83 (SUPPL.C.C.&R.'S) C.C.&R.'S 10454/36 8-18-81
PHASE 4(LOT2)11103/36 1-27-83 (SUPPL.C.C.&R.'S) AMD. C.C.&R.'S 10470/698 8-28-81
2ND.AMD. C.C.&R.'S 10602/50 12-8-81



FM.377/17 2-10-83 9-10-81