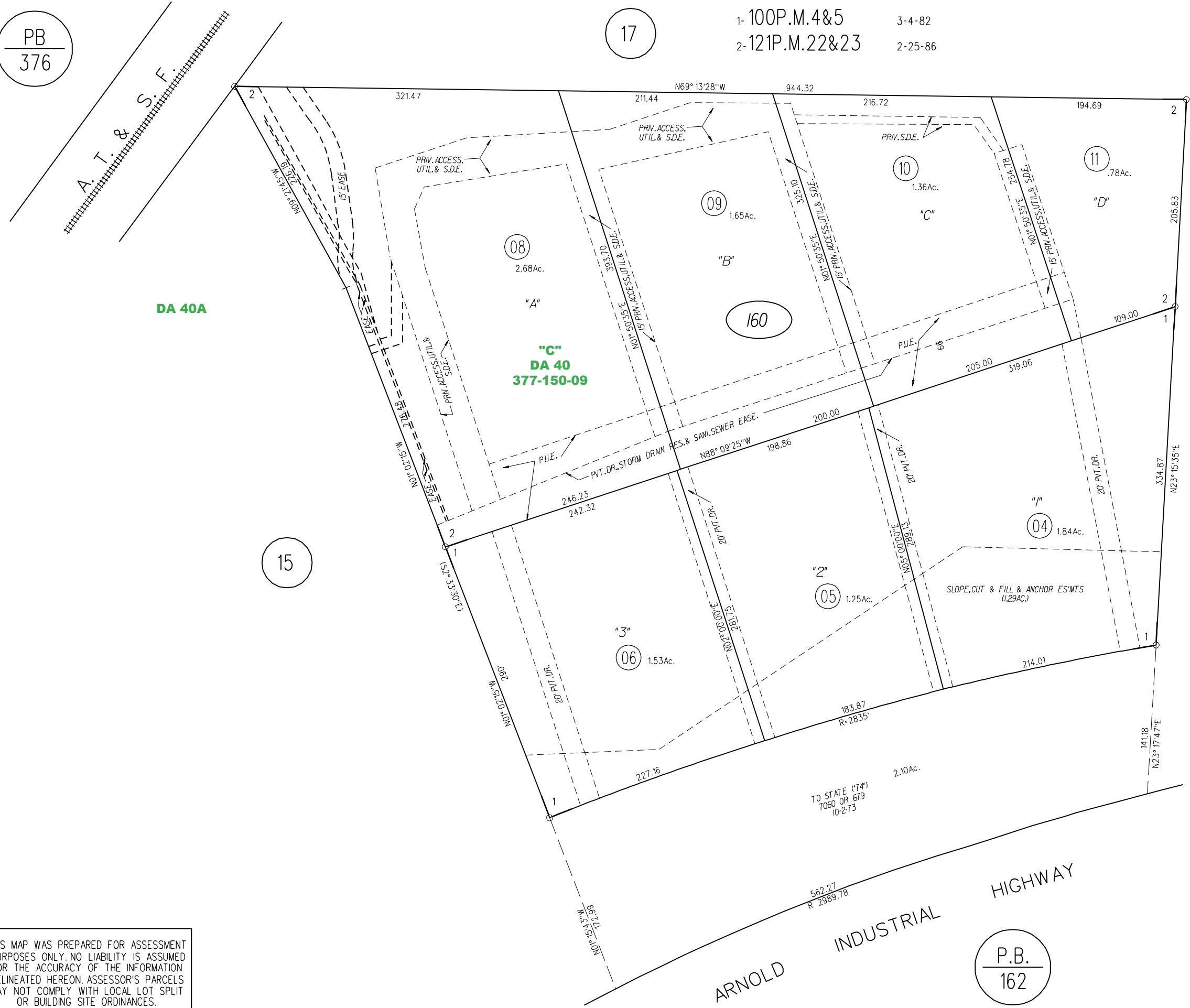
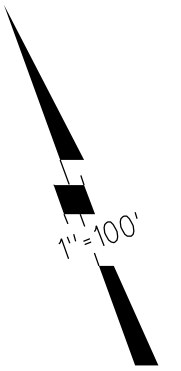


RANCHO LAS JUNTAS 32 LSM 14

1- 100P.M.4&5 3-4-82
2- 121P.M.22&23 2-25-86

PB
376

17



DA 40A

"C"
DA 40
377-150-09

DA 40A

ARNOLD INDUSTRIAL HIGHWAY

P.B.
162

NOTE: THIS MAP WAS PREPARED FOR ASSESSMENT PURPOSES ONLY. NO LIABILITY IS ASSUMED FOR THE ACCURACY OF THE INFORMATION DELINEATED HEREON. ASSESSOR'S PARCELS MAY NOT COMPLY WITH LOCAL LOT SPLIT OR BUILDING SITE ORDINANCES.

1962 ROLL 4-2-86

ASSESSOR'S MAP

BOOK 377 PAGE 16

87-15 CONTRA COSTA COUNTY, CALIF.