

PB
375

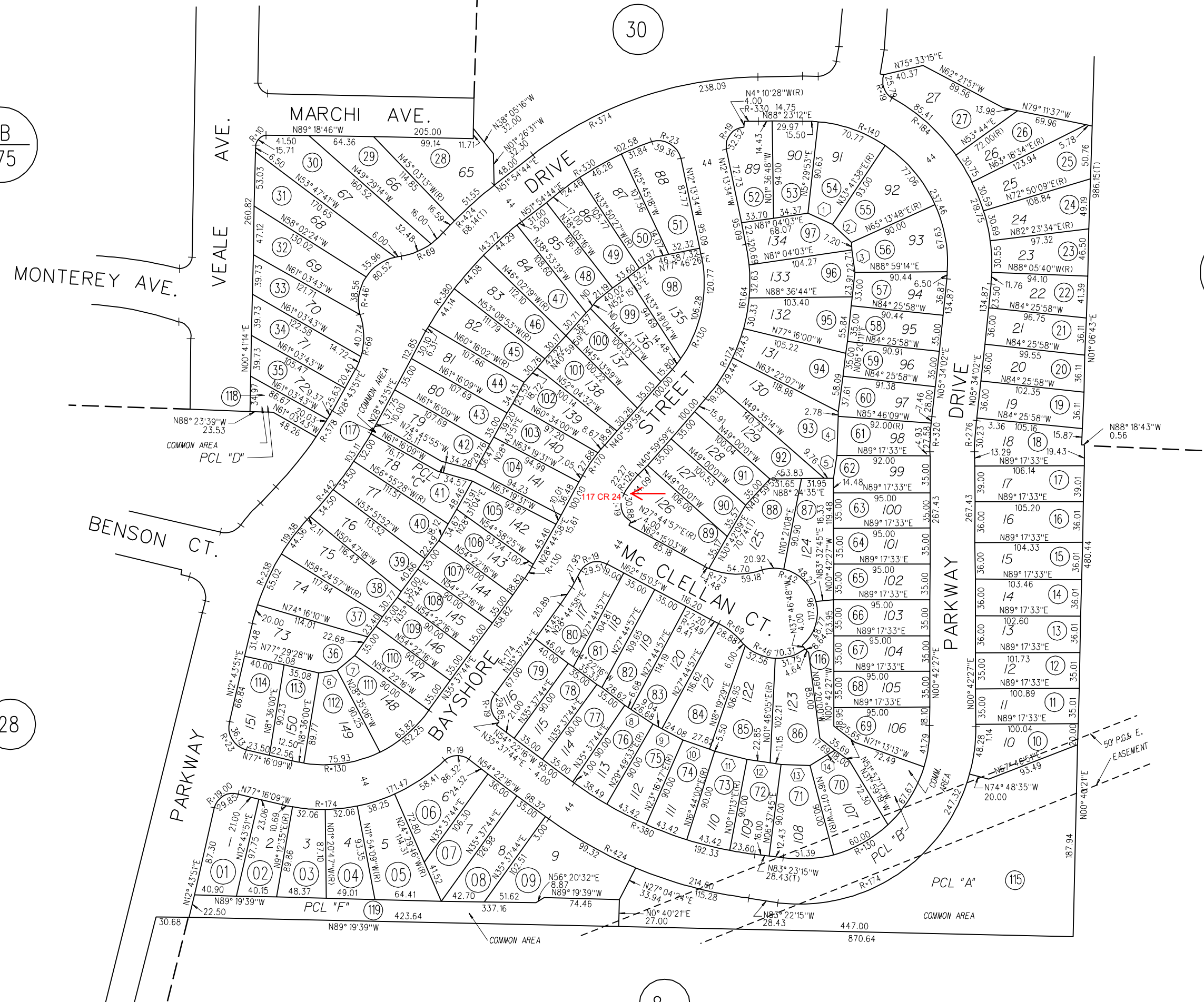
PB
375

28

290

30

8



	BEARING	DIST.
1	N66° 16' 29" W	25.36
2	N46° 47' 19" W	26.52
3	N7° 39' 48" W	29.91
4	N1° 29' 36" E	39.82
5	N7° 36' 38" E	20.74
6	N80° 35' 01" E	17.45
7	N52° 20' 14" E	23.00
8	N56° 55' 28" W	33.36
9	N63° 26' 50" W	33.12
10	N69° 59' 34" W	33.12
11	N76° 32' 23" W	33.12
12	N82° 25' 44" W	34.01
13	N89° 41' 46" W	28.00
14	N58° 20' 16" E	28.50
15	N40° 59' 59" E	35.00