

139 LSM 23

323

01
.26Ac.

11

80 LSM 44

01
.10Ac.

77 LSM 48

13
.14Ac.

RICHARDSON ST.

15

04
.10Ac.

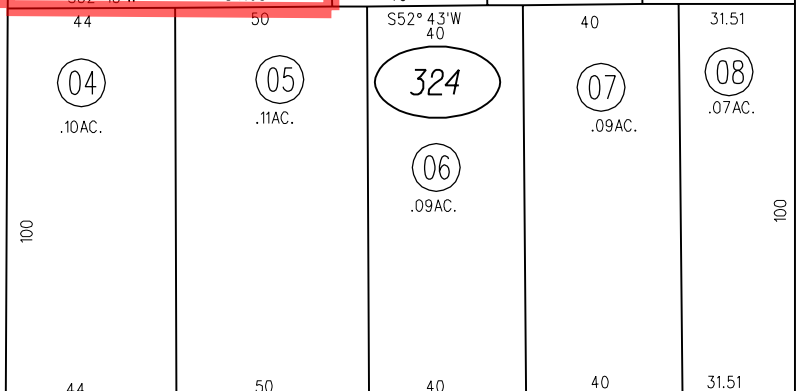
05
.11Ac.

324

07
.09Ac.

08
.07Ac.

06
.09Ac.



N52° 34'E

HAVEN

NOTE: THIS MAP WAS PREPARED FOR ASSESSMENT PURPOSES ONLY. NO LIABILITY IS ASSUMED FOR THE ACCURACY OF THE INFORMATION DELINEATED HEREON. ASSESSOR'S PARCELS MAY NOT COMPLY WITH LOCAL LOT SPLIT OR BUILDING SITE ORDINANCES.



"C"
DA 117

"B"

04
.19Ac.

322

02
.21Ac.

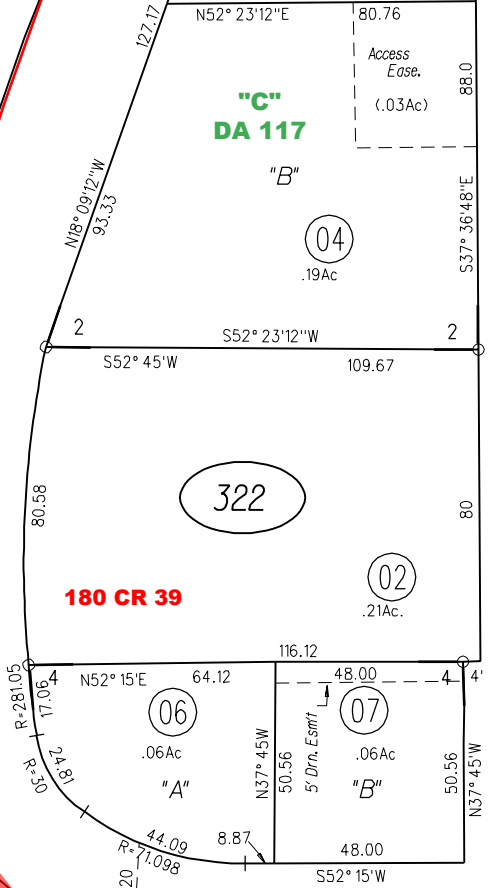
180 CR 39

06
.06Ac.

"A"

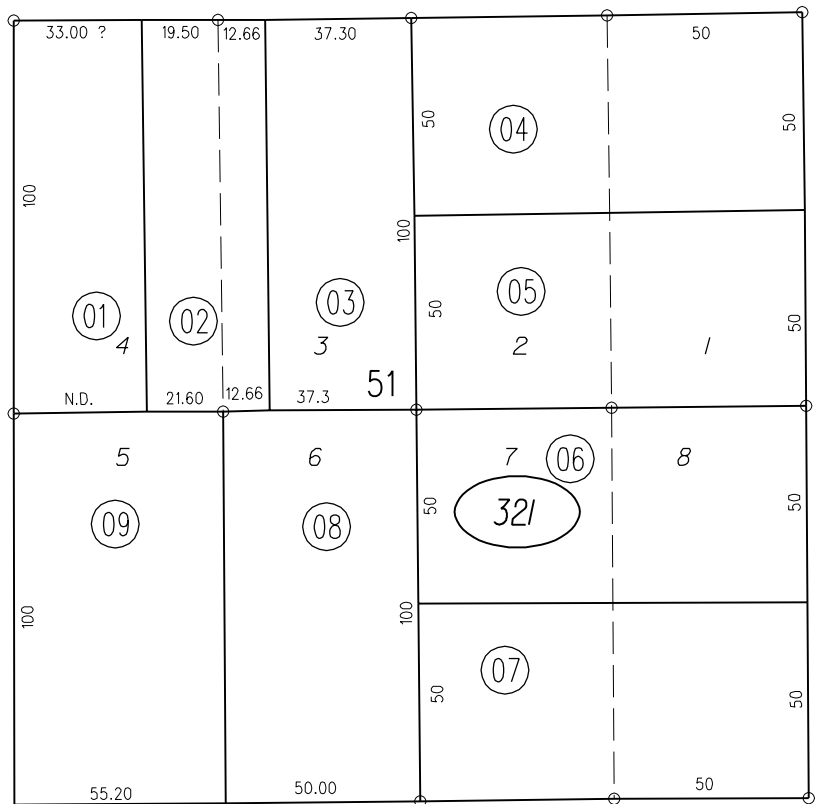
07
.06Ac.

"B"

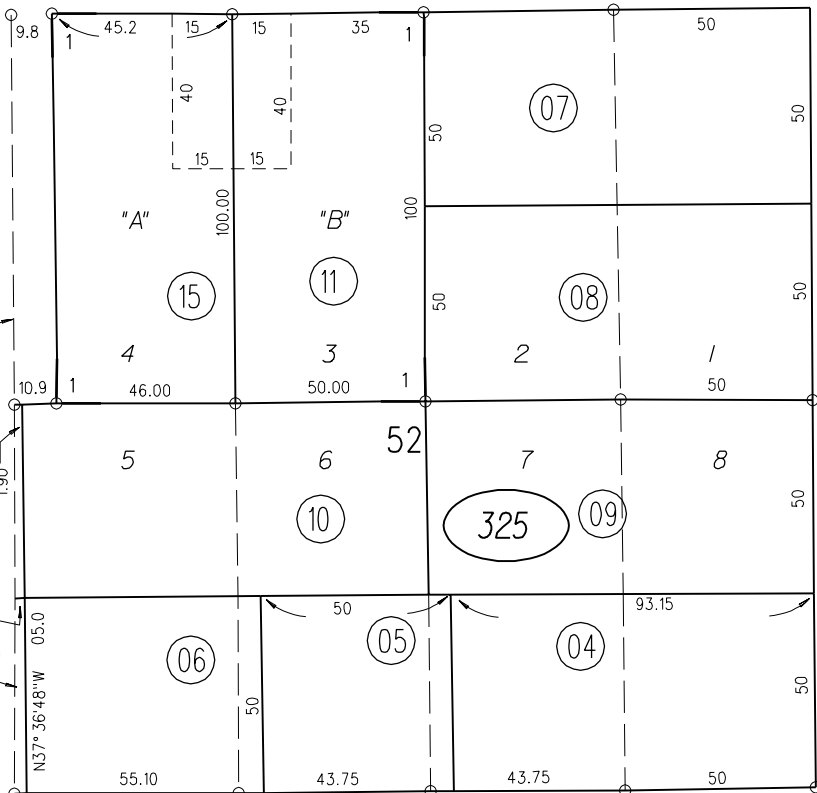


SUSANA

37



JONES



BERRELLESA

ALHAMBRA

30

321

322

324

325

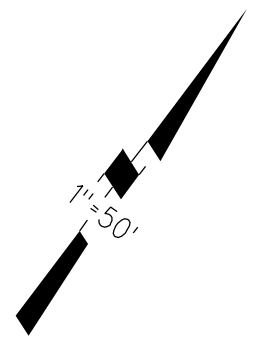
ST.

A - ORIG. SURVEY CITY OF MARTINEZ M. B. D-83

RO EL PINOLE

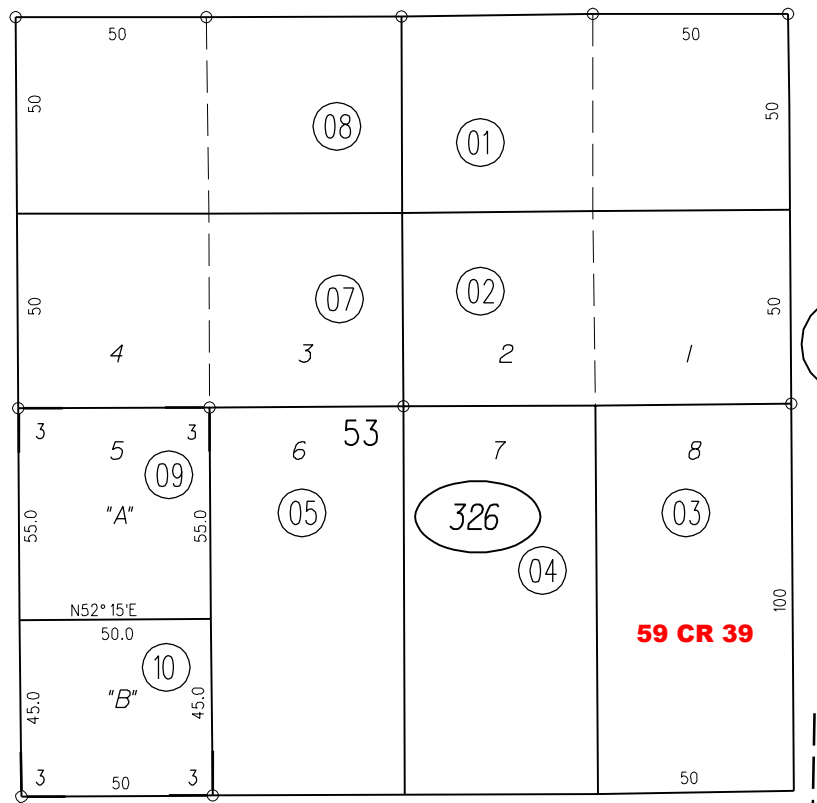
- 1- 15 P.M.31 2/11/71
- 2- POR. 85 P.M.16 3-18-80
- 3- 95 P.M.35 6-17-81
- 4- 96 P.M.4 7-8-81

33



AVE.

ST.



CASTRO

1961 ROLL

ASSESSOR'S MAP

BOOK 372 PAGE 32

FM.118-46 CONTRA COSTA COUNTY, CALIF.

ST.