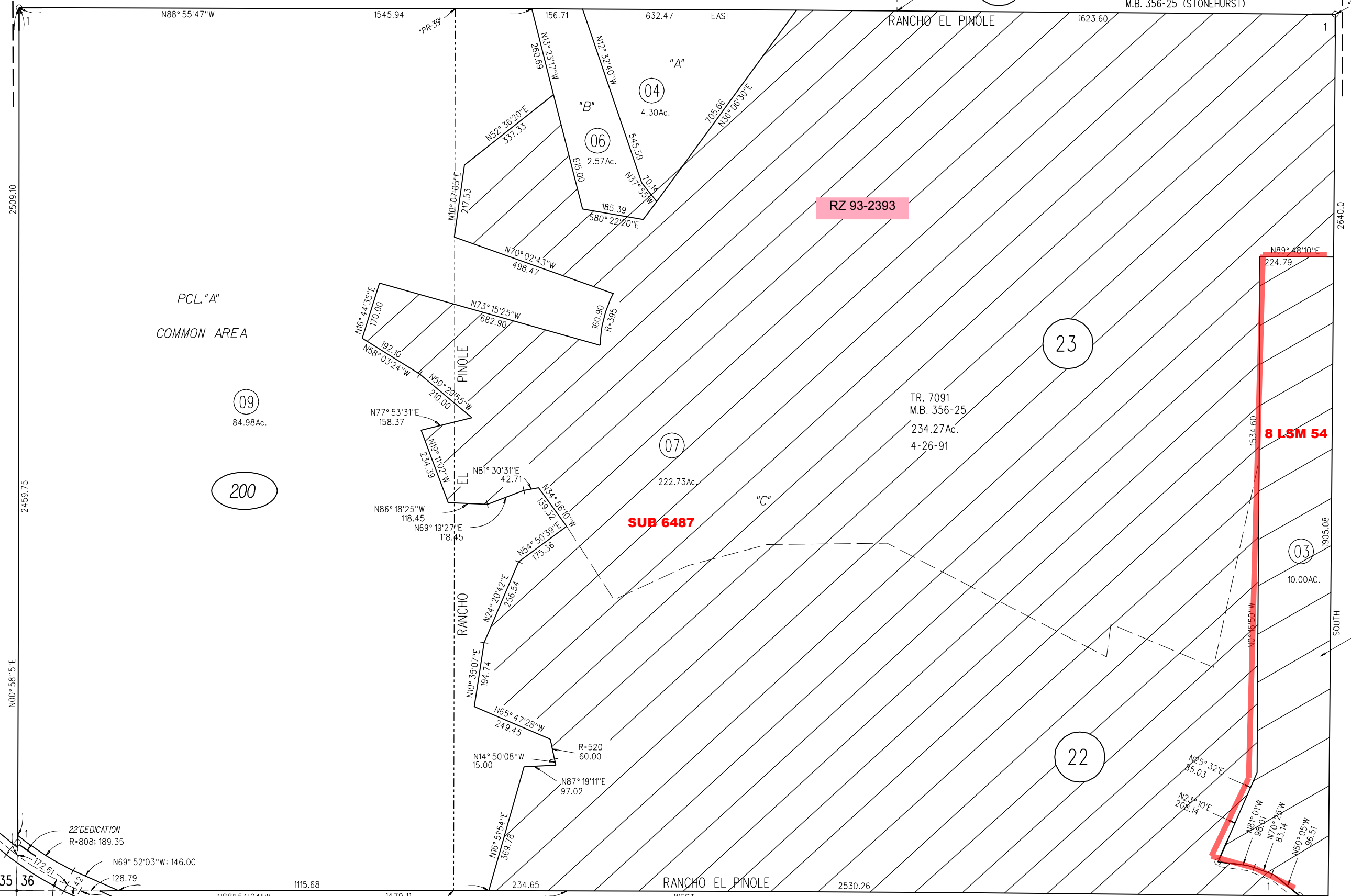


21

21

1992 ROLL - POR. TR. 7091
M.B. 356-25 (STONEHURST)



RZ 93-2393

SUB 6487

8 LSM 54

P.B.
362

200

23

07

25

22

03

19

18

200

ALHAMBRA VALLEY

ROAD

SEC 36 T2N R3W MDBM
RANCHO EL PINOLE 1-28P.M.22 6-5-73

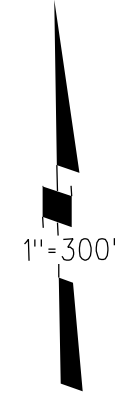
1962 ROLL

ALHAMBRA VALLEY ROAD

ASSESSOR'S MAP

8-20-91 BOOK 367 PAGE 20

Fm.89-39 CONTRA COSTA COUNTY,CALIF.



SOUTH

NORTH 775.60 SOUTH 775.30