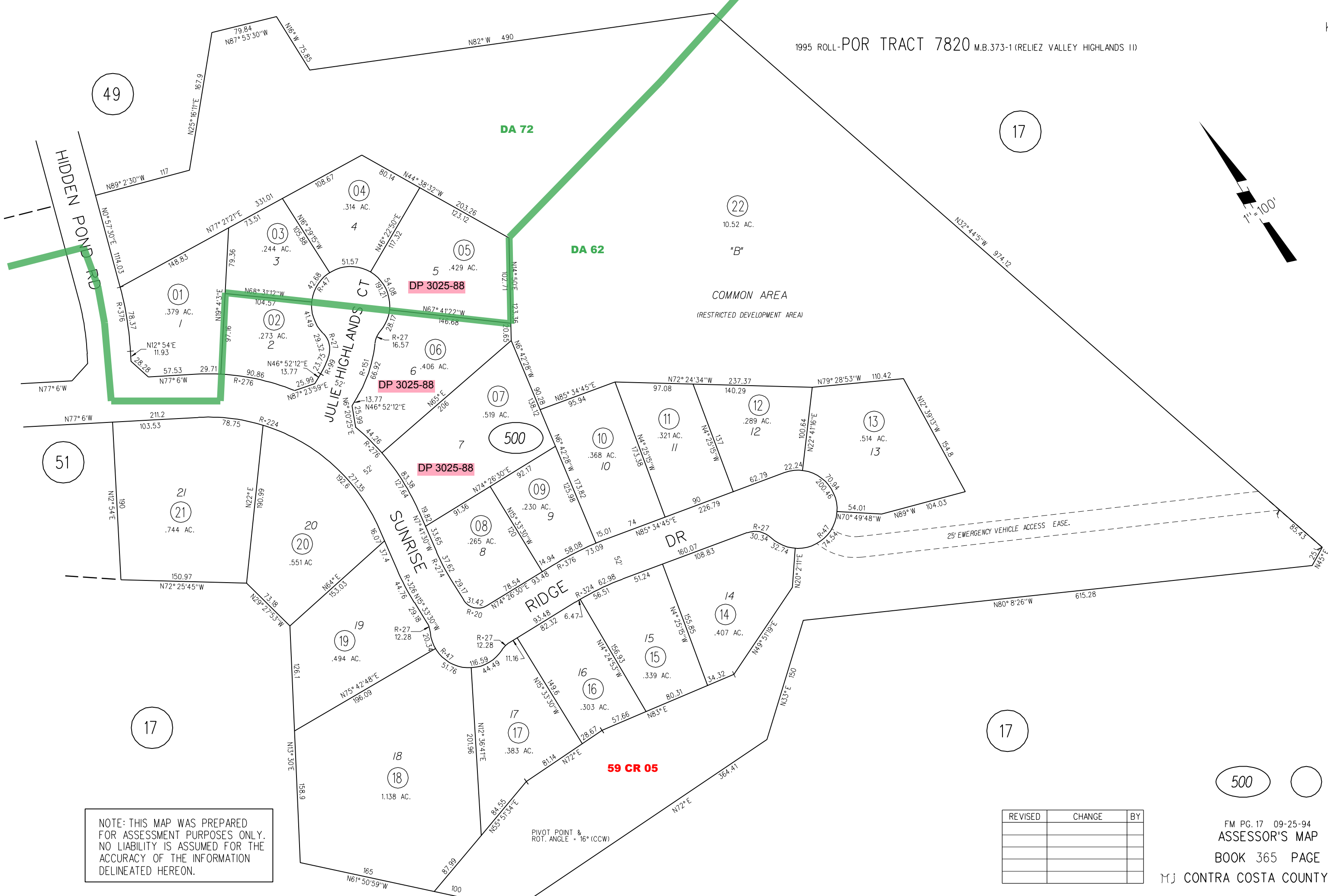


1995 ROLL-POR TRACT 7820 M.B.373-1 (RELIEZ VALLEY HIGHLANDS II)



NOTE: THIS MAP WAS PREPARED FOR ASSESSMENT PURPOSES ONLY. NO LIABILITY IS ASSUMED FOR THE ACCURACY OF THE INFORMATION DELINEATED HEREON.

PIVOT POINT & ROT. ANGLE = 16° (CCW)

REVISED	CHANGE	BY

500

FM PG. 17 09-25-94
 ASSESSOR'S MAP
 BOOK 365 PAGE 50
 MJ CONTRA COSTA COUNTY, CALIF.