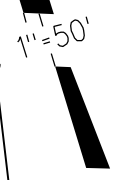


28

1987 ROLL - TRACT 6666

M.B. 307-25 "BAYPOINTE" CONDO. LOT 1 (PHASE- 1), LOT 2 (PHASE- 2)
C.C.&R.S 13507/110,137 3-13-87

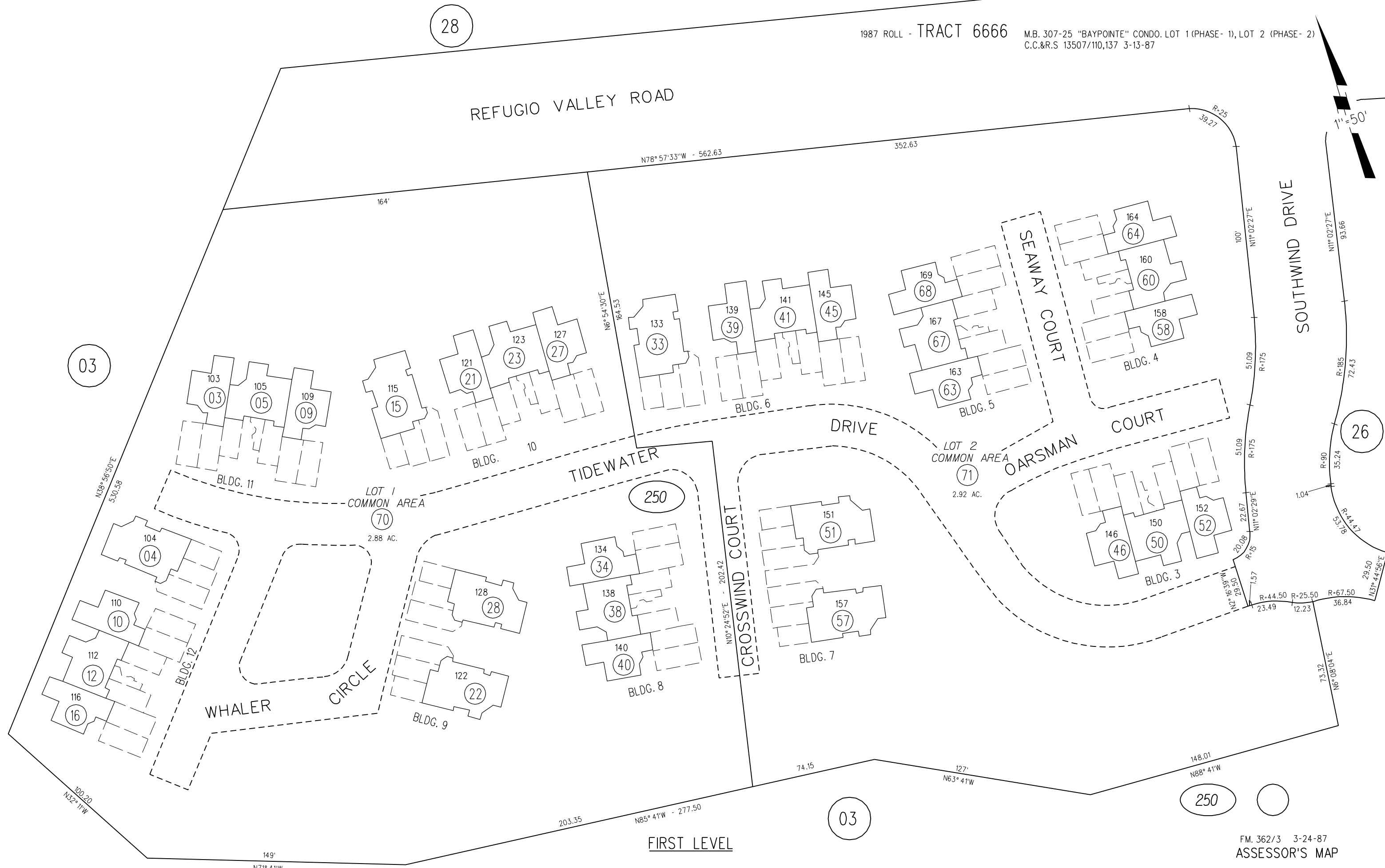
REFUGIO VALLEY ROAD



SOUTHWIND DRIVE

03

26



FIRST LEVEL

250

FM. 362/3 3-24-87
ASSESSOR'S MAP
BOOK 362 PAGE 25 S-1
CONTRA COSTA COUNTY, CALIF.