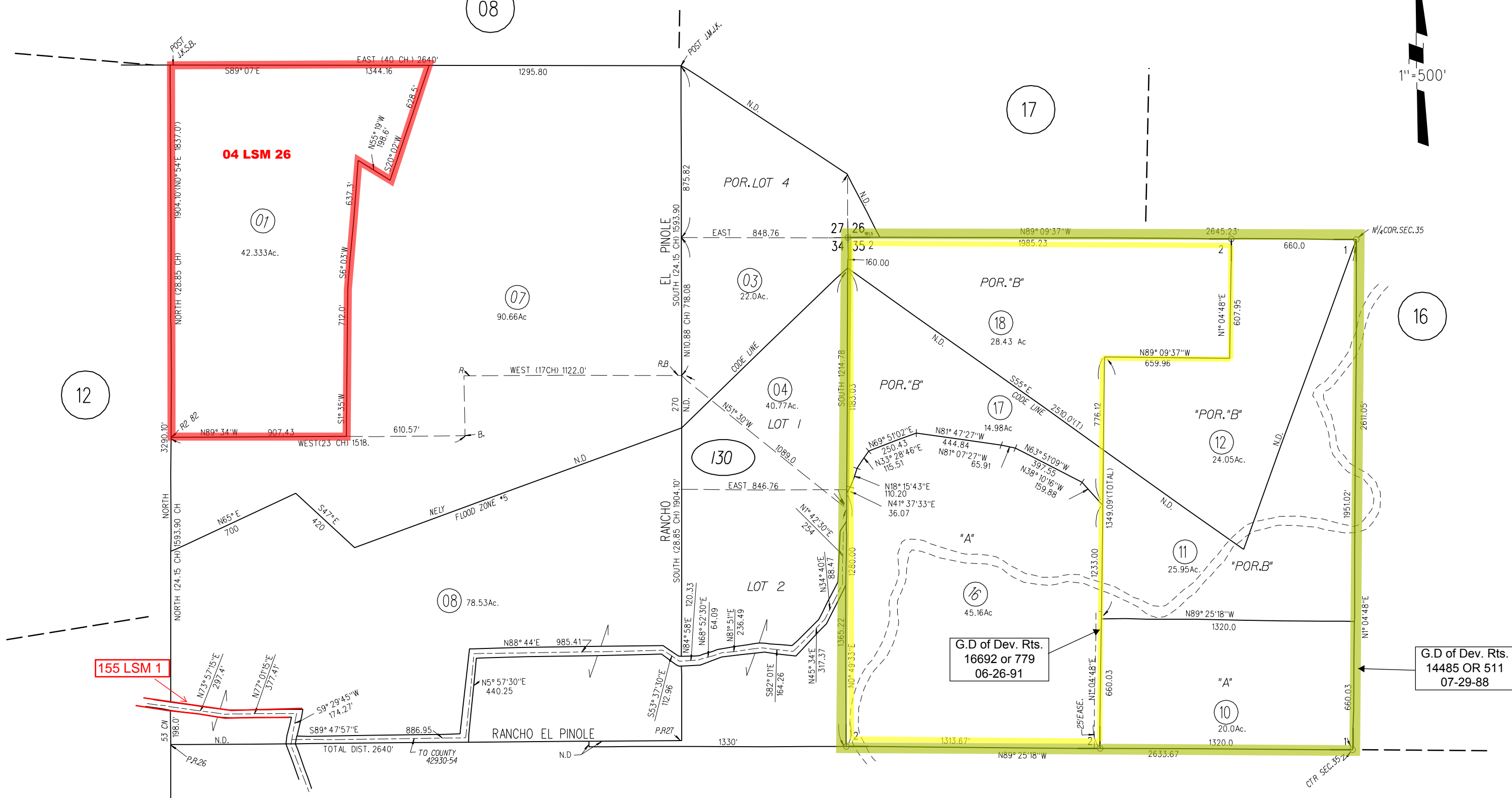
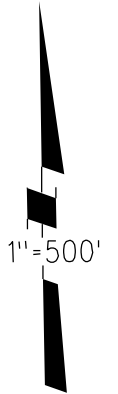


SEC. 26, 27, 34 & 35 T2N R3W MDB & M

RANCHO EL PINOLE

1- 134 P.M. 43 7-29-88

2- 153 P.M. 7 6-26-91



155 LSM 1

04 LSM 26

G.D of Dev. Rts.  
16692 or 779  
06-26-91

G.D of Dev. Rts.  
14485 OR 511  
07-29-88