

POR. LOT D-TORMEY ESTATE

3 JG' MT. BK. SUP. CT. 121

1- 117 P.M. 40-45 8-20-85

A- 1987 ROLL TRACT 6666 M.B. 307-25 "BAYPOINTE"

B- 1987 ROLL- POR. TRACT 6724 M.B. 310-49 "ESTATE LOTS AT REFUGIO VALLEY RANCH"

C- 1988 ROLL- POR. TRACT 6436 M.B. 313-17 "REFUGIO VALLEY RANCH"

D- 1988 ROLL- PCL.B TRACT 6774 M.B. 314-43 "REFUGIO VALLEY RANCH"

E- 1988 ROLL- TRACT 6775 M.B. 312-7 "BAY POINTE II.AT REFUGIO VALLEY RANCH" CONDO.

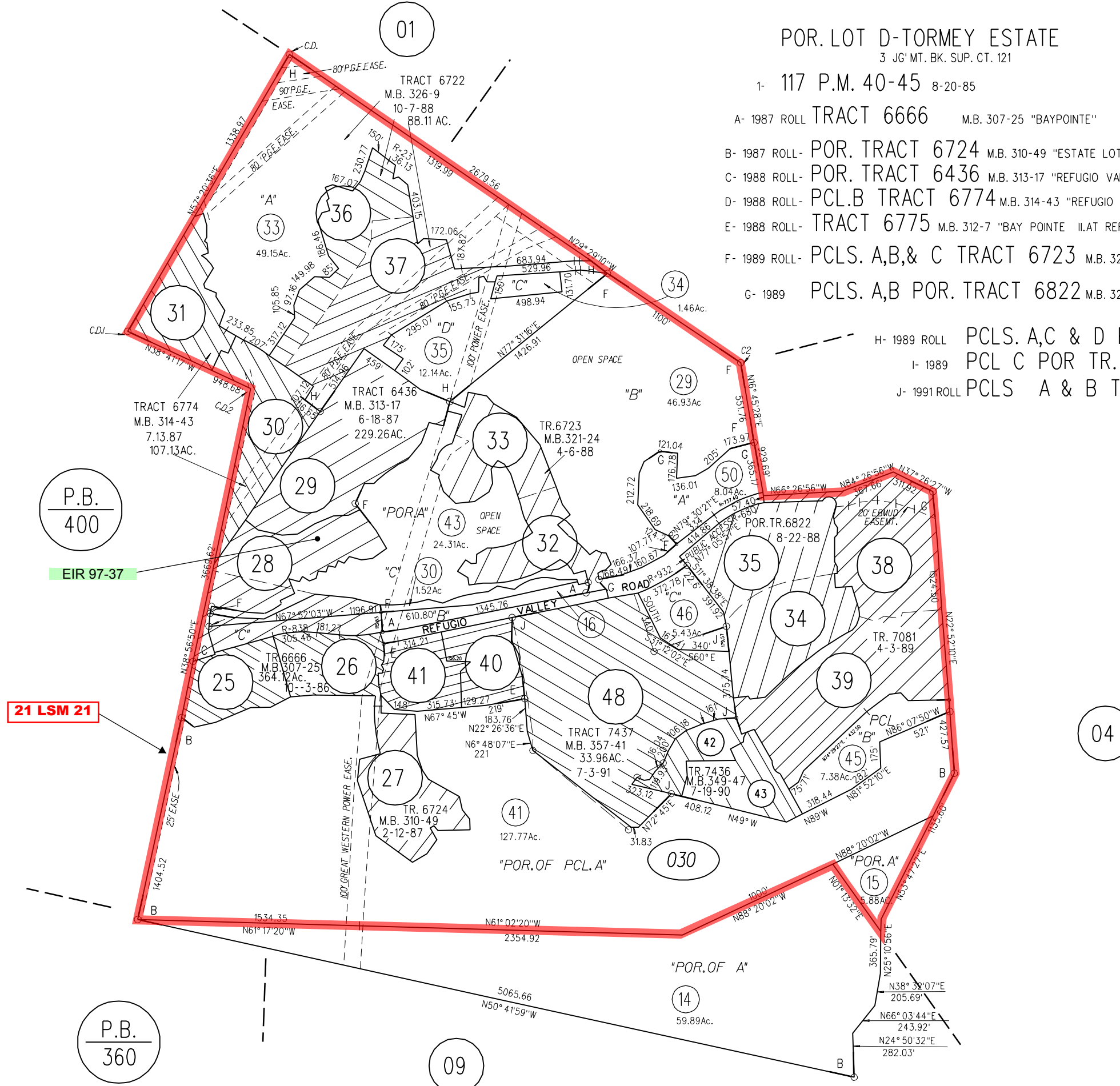
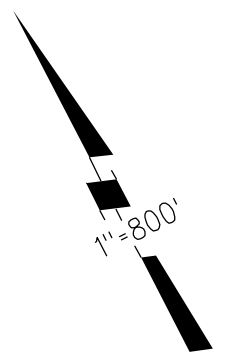
F- 1989 ROLL- PCLS. A,B,& C TRACT 6723 M.B. 321-34 "REFUGIO VALLEY RANCH"

G- 1989 PCLS. A,B POR. TRACT 6822 M.B. 324-34 "REFUGIO VALLEY RANCH"

H- 1989 ROLL PCLS. A,C & D POR. TRACT 6722 M.B. 326-9 REFUGIO VALLEY RANCH

I- 1989 PCL C POR TR. 7081 MB 332-6 "REFUGIO VALLEY RANCH"

J- 1991 ROLL PCLS A & B TR. 7436 M.B. 349-47 "CAPRICE AT REFUGIO VALLEY RANCH" CONDOS.



P.B.
400

EIR 97-37

21 LSM 21

P.B.
360

030

117-97
ke

FM. PG'S. 03,09 & 360 PG. 23 1-17-86