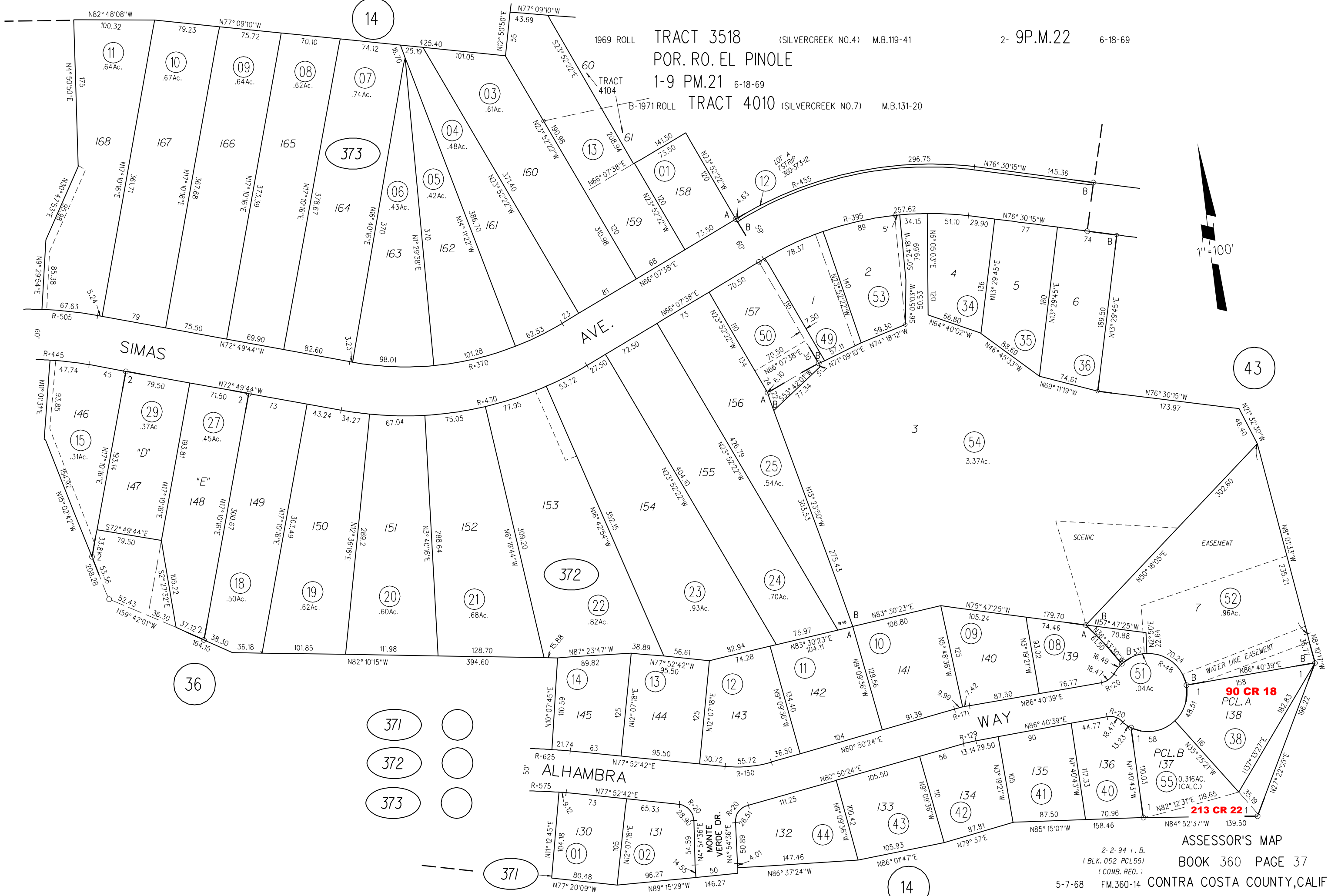
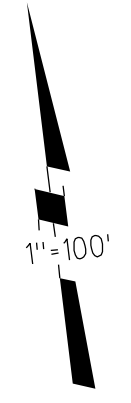


1969 ROLL TRACT 3518 (SILVERCREEK NO.4) M.B.119-41  
POR. RO. EL PINOLE 1-9 PM.21 6-18-69  
B-1971 ROLL TRACT 4010 (SILVERCREEK NO.7) M.B.131-20

2- 9P.M.22 6-18-69



371  
372  
373

90 CR 18  
PCL. A  
138

PCL. B  
137  
0.316 AC.  
(CALC.)

213 CR 22  
1