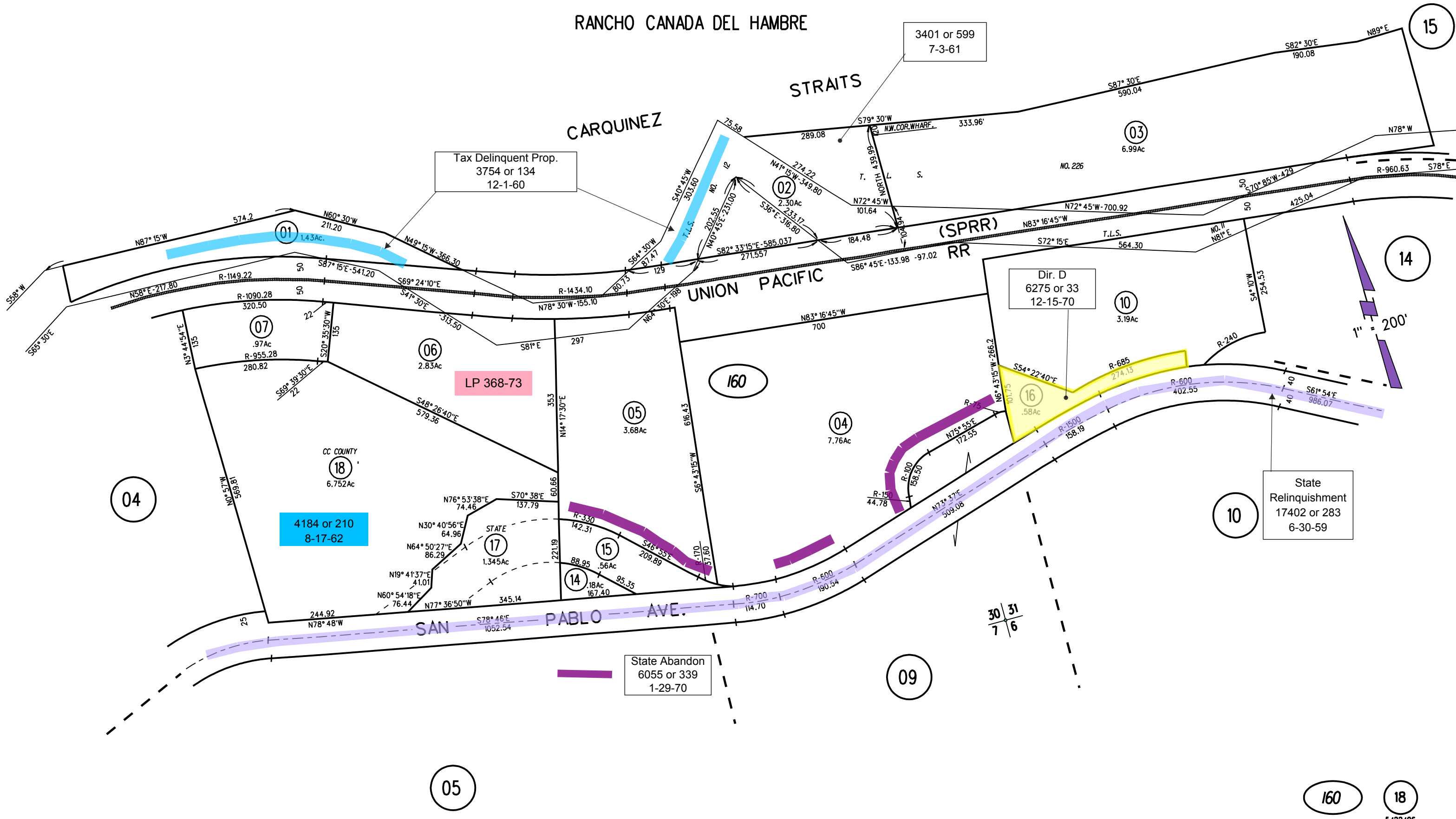


RANCHO CANADA DEL HAMBRE



Tax Delinquent Prop.
3754 or 134
12-1-60

3401 or 599
7-3-61

Dir. D
6275 or 33
12-15-70

State
Relinquishment
17402 or 283
6-30-59

State Abandon
6055 or 339
1-29-70

4184 or 210
8-17-62

NOTE: THIS MAP WAS PREPARED FOR ASSESSMENT PURPOSES ONLY. NO LIABILITY IS ASSUMED FOR THE ACCURACY OF THE INFORMATION DELINEATED HEREON. ASSESSOR'S PARCELS MAY NOT COMPLY WITH LOCAL LOT SPLIT OR BUILDING SITE ORDINANCES.