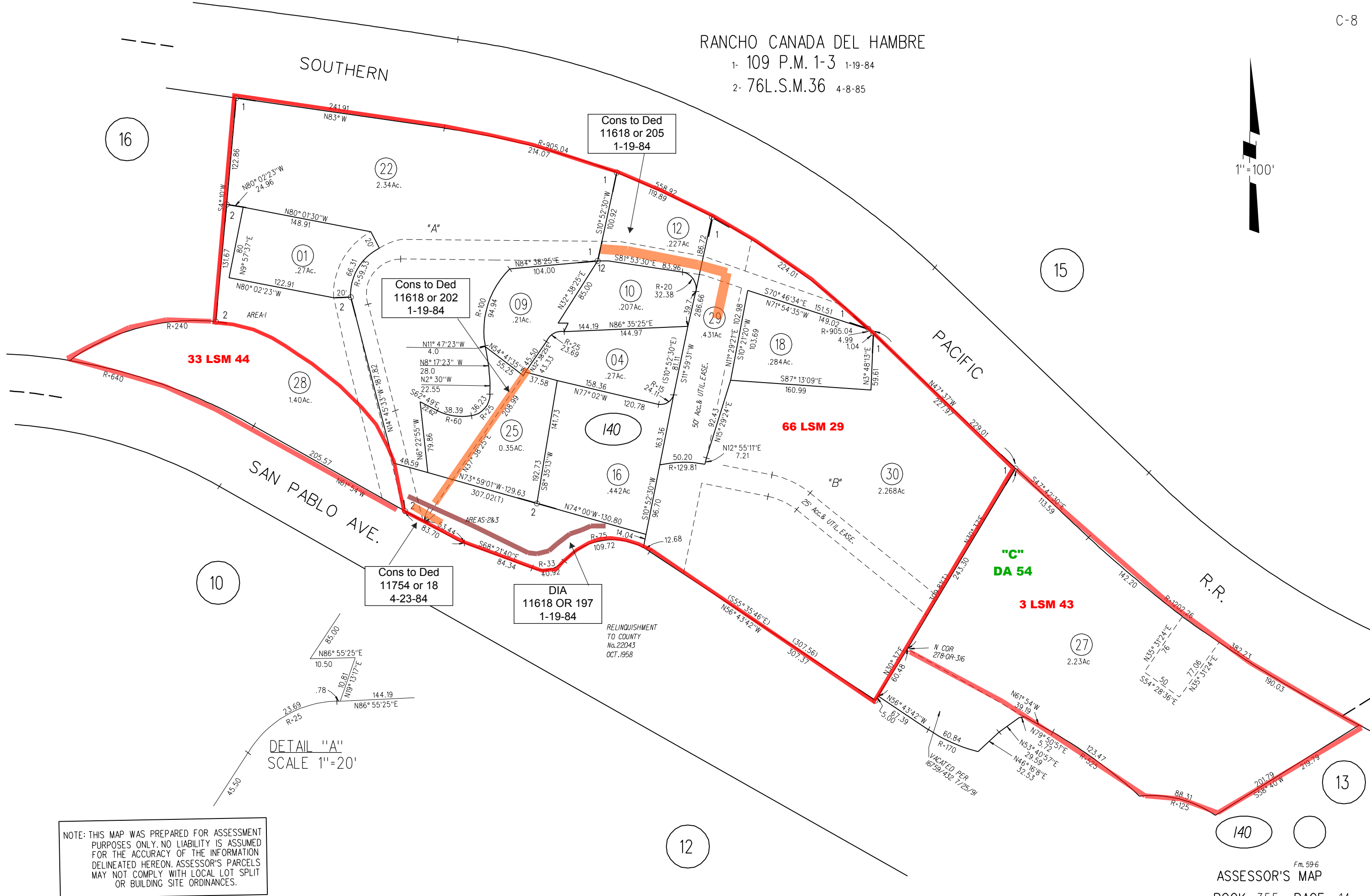


# RANCHO CANADA DEL HAMBRE

1- 109 P.M. 1-3 1-19-84

2- 76L.S.M.36 4-8-85



16

15

33 LSM 44

66 LSM 29

3 LSM 43

DA 54

Cons to Ded 11618 or 202 1-19-84

Cons to Ded 11618 or 205 1-19-84

Cons to Ded 11754 or 18 4-23-84

DIA 11618 OR 197 1-19-84

RELINQUISHMENT TO COUNTY No. 22043 OCT. 1958

DETAIL "A" SCALE 1"=20'

NOTE: THIS MAP WAS PREPARED FOR ASSESSMENT PURPOSES ONLY. NO LIABILITY IS ASSUMED FOR THE ACCURACY OF THE INFORMATION DELINEATED HEREON. ASSESSOR'S PARCELS MAY NOT COMPLY WITH LOCAL LOT SPLIT OR BUILDING SITE ORDINANCES.

12

13

140