

29



P.B.
368

300

07
461.06Ac

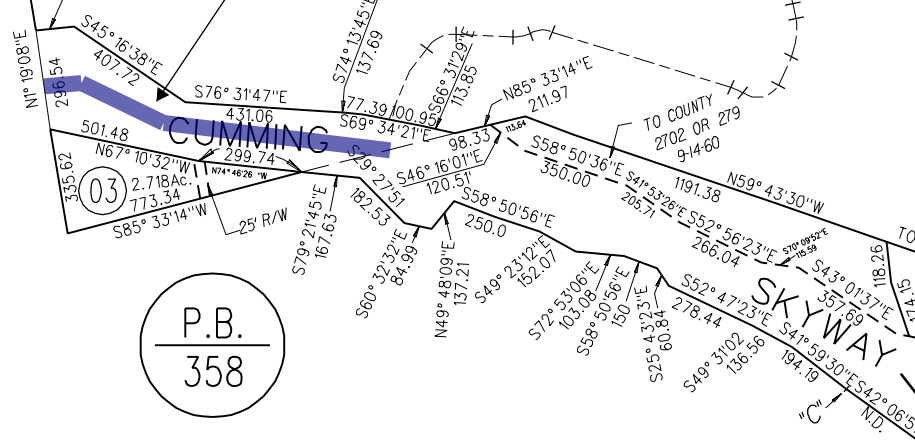
28

LP 2061-11

LP 2075-03
LP 2013-85
LP 2015-10

2794 OR 464
6-25-56

08
.92Ac



P.B.
358

02
5.33Ac

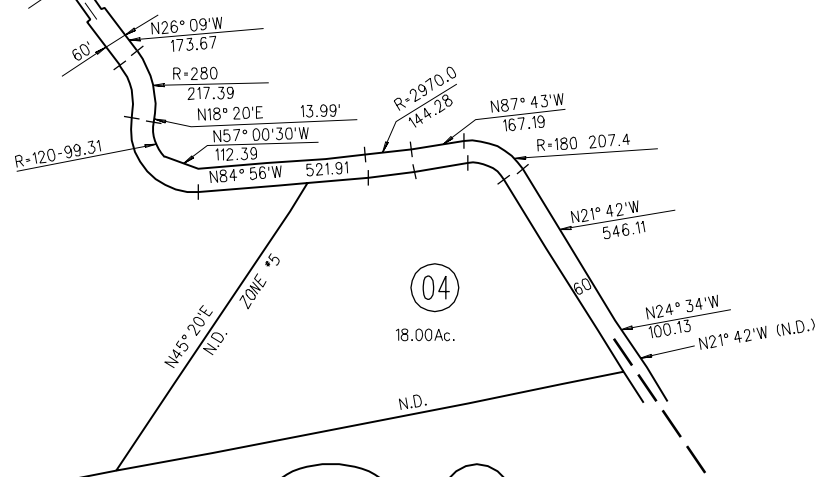
ZC 763-09

TOTAL DIST = 2664.78

31

300

04
18.00Ac.



1962 ROLL 6-13-88
ASSESSOR'S MAP

BOOK 354 PAGE 30