

A- CROCKETT, TOWN OF
RANCHO CANADA DEL HAMBRE

M B D - 88 B-1991 ROLL- TRACT 7006 M.B.350-20

- 1- 97P.M.7 8-17-81
- 2- 105P.M.18 3-25-83

D.I.A.
10452 OR 502
8-17-81

390 OR 55
10-24-35

574 OR 304
11-26-40

LP 2091-85

LP 2032-93

VP 1070-04

VP 1012-91

DEED TO
PARCEL
CROCKET
COMMUNITY
CENTER
4966 OR 259

8160 OR 140
1-11-77

Drainage
10367 OR 515
6-15-81

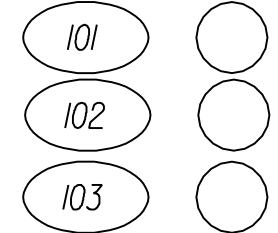
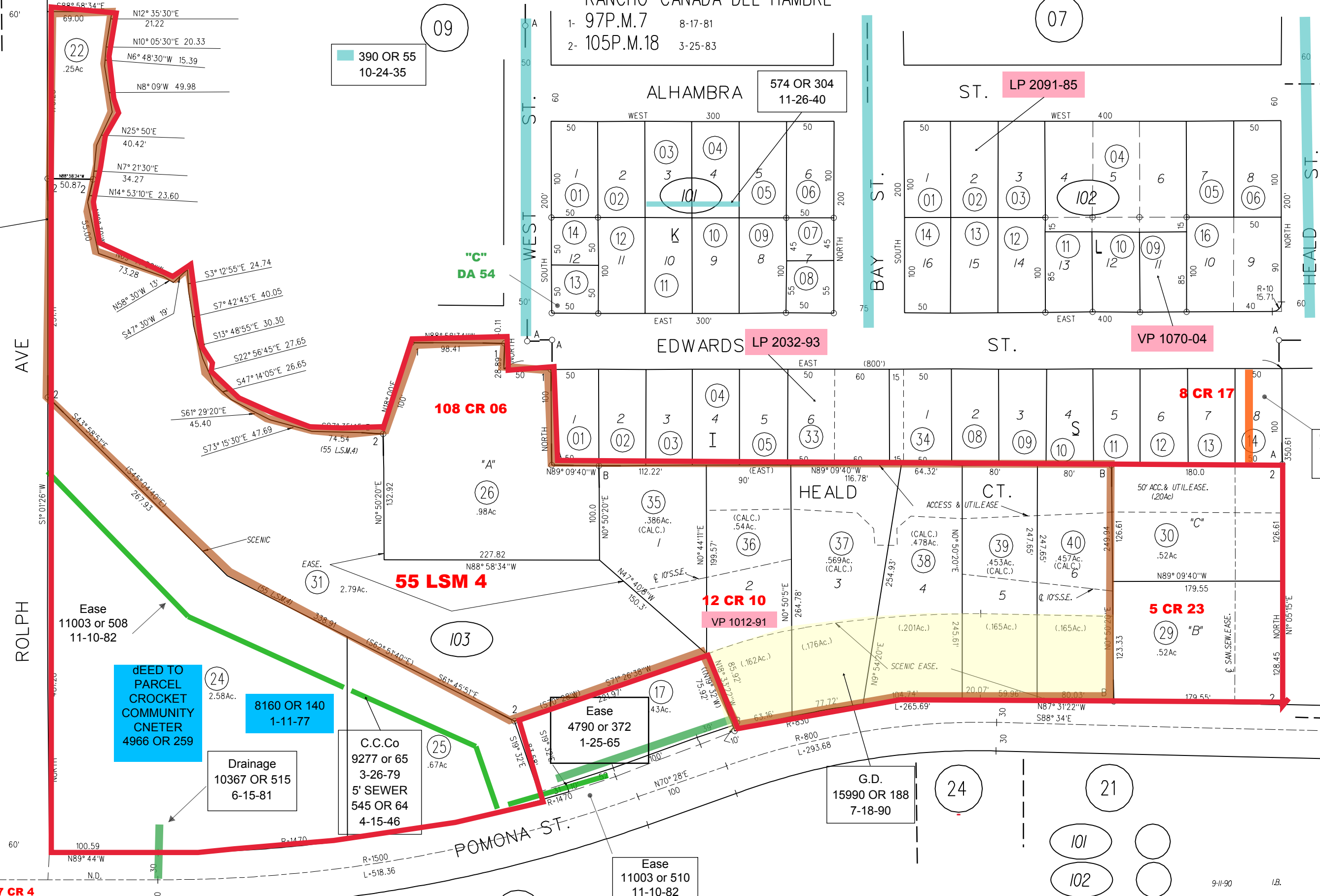
C.C.Co
9277 or 65
3-26-79
5' SEWER
545 OR 64
4-15-46

Ease
4790 or 372
1-25-65

G.D.
15990 OR 188
7-18-90

Ease
11003 or 510
11-10-82

Offer -of Ded
11179 or 858
3-25-83



fm 60 - 5,8,9.