

POR OAK SPRINGS UNIT NO. 1 MB 19-456

OAK SPRINGS UNIT NO. 3 MB 20-536

A- POR. TRACT 7173 (OAK SPRINGS-UNIT 3) MB 324-22

B- TRACT 7265 (REVERSION TO ACREAGE) MB 331-29 "OAK SPRINGS-UNIT 3"

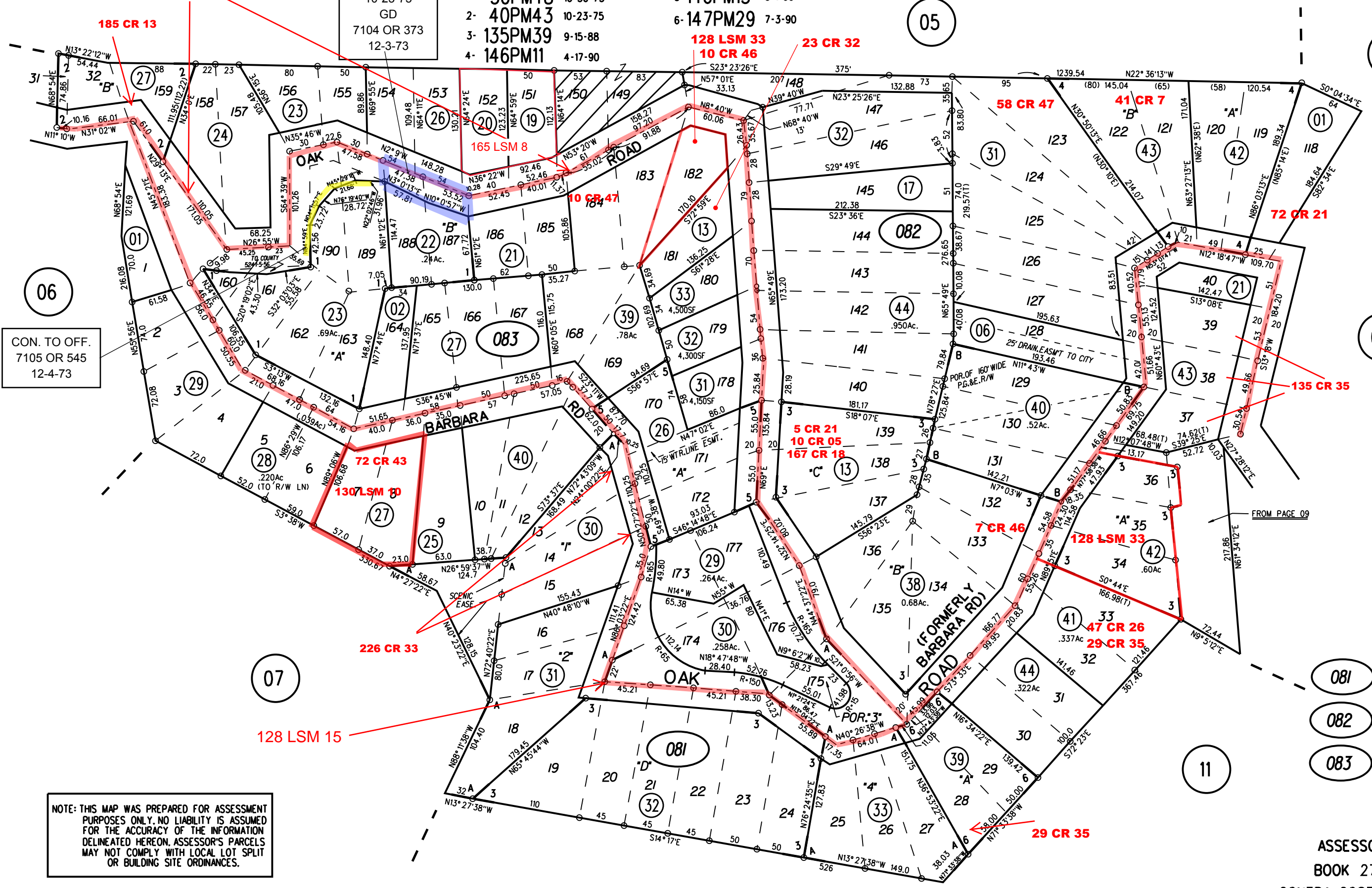
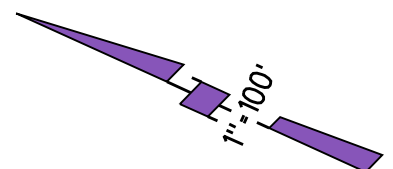
1- 30PM48 10-30-73 5- 146PM15 5-1-90

2- 40PM43 10-23-75 6- 147PM29 7-3-90

3- 135PM39 9-15-88

4- 146PM11 4-17-90

WIDENING  
7665 OR 720  
10-23-75  
GD  
7104 OR 373  
12-3-73



CON. TO OFF.  
7105 OR 545  
12-4-73

NOTE: THIS MAP WAS PREPARED FOR ASSESSMENT PURPOSES ONLY. NO LIABILITY IS ASSUMED FOR THE ACCURACY OF THE INFORMATION DELINEATED HEREON. ASSESSOR'S PARCELS MAY NOT COMPLY WITH LOCAL LOT SPLIT OR BUILDING SITE ORDINANCES.

081 44 4/25/07  
082  
083 39 2/14/17