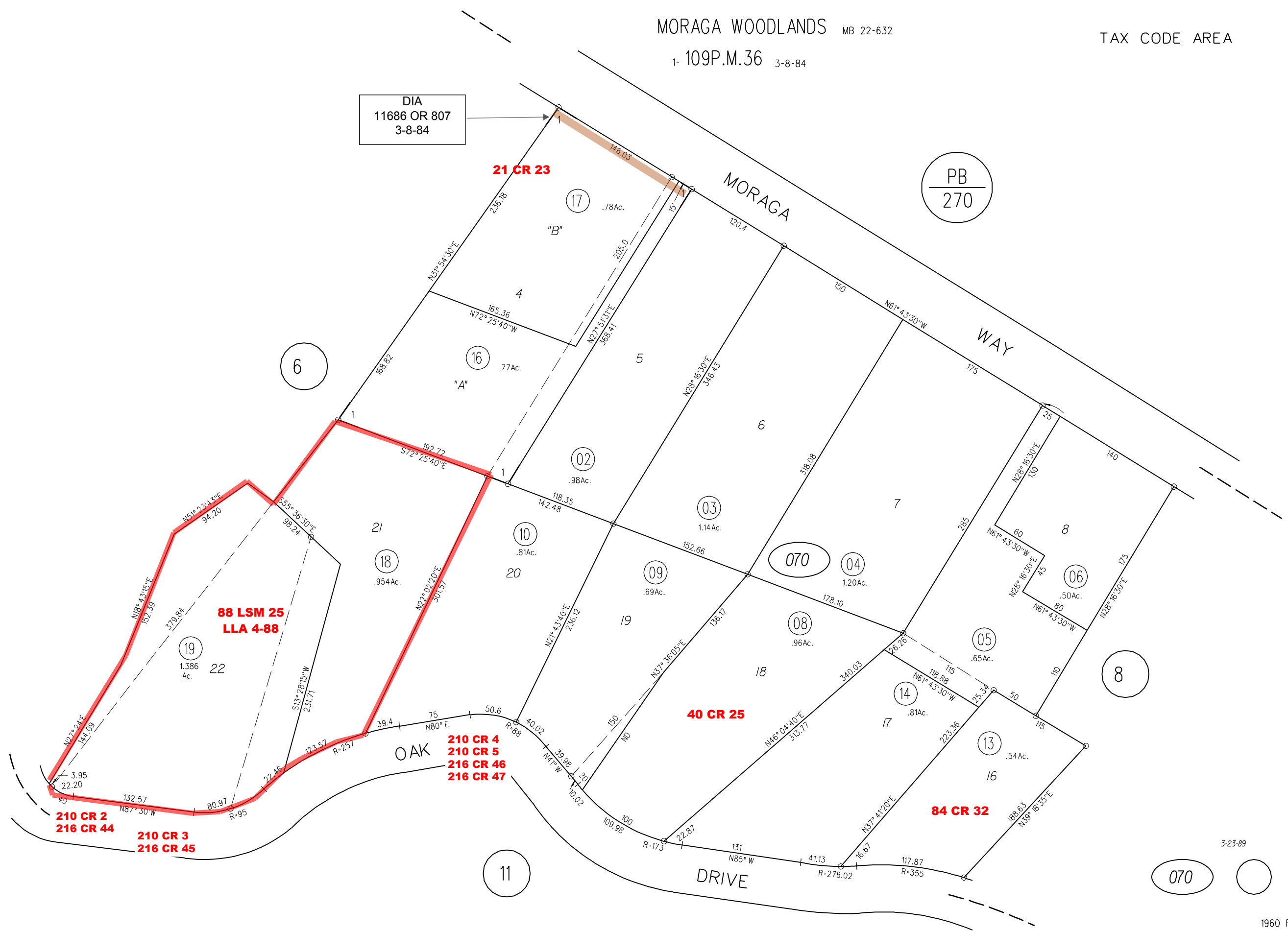
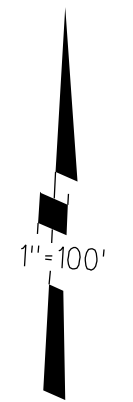


1- 109P.M.36 3-8-84

DIA
11686 OR 807
3-8-84

PB
270



**88 LSM 25
LLA 4-88**

40 CR 25

**210 CR 4
210 CR 5
216 CR 46
216 CR 47**

84 CR 32

**210 CR 2
216 CR 44**
**210 CR 3
216 CR 45**

3-23-89

070