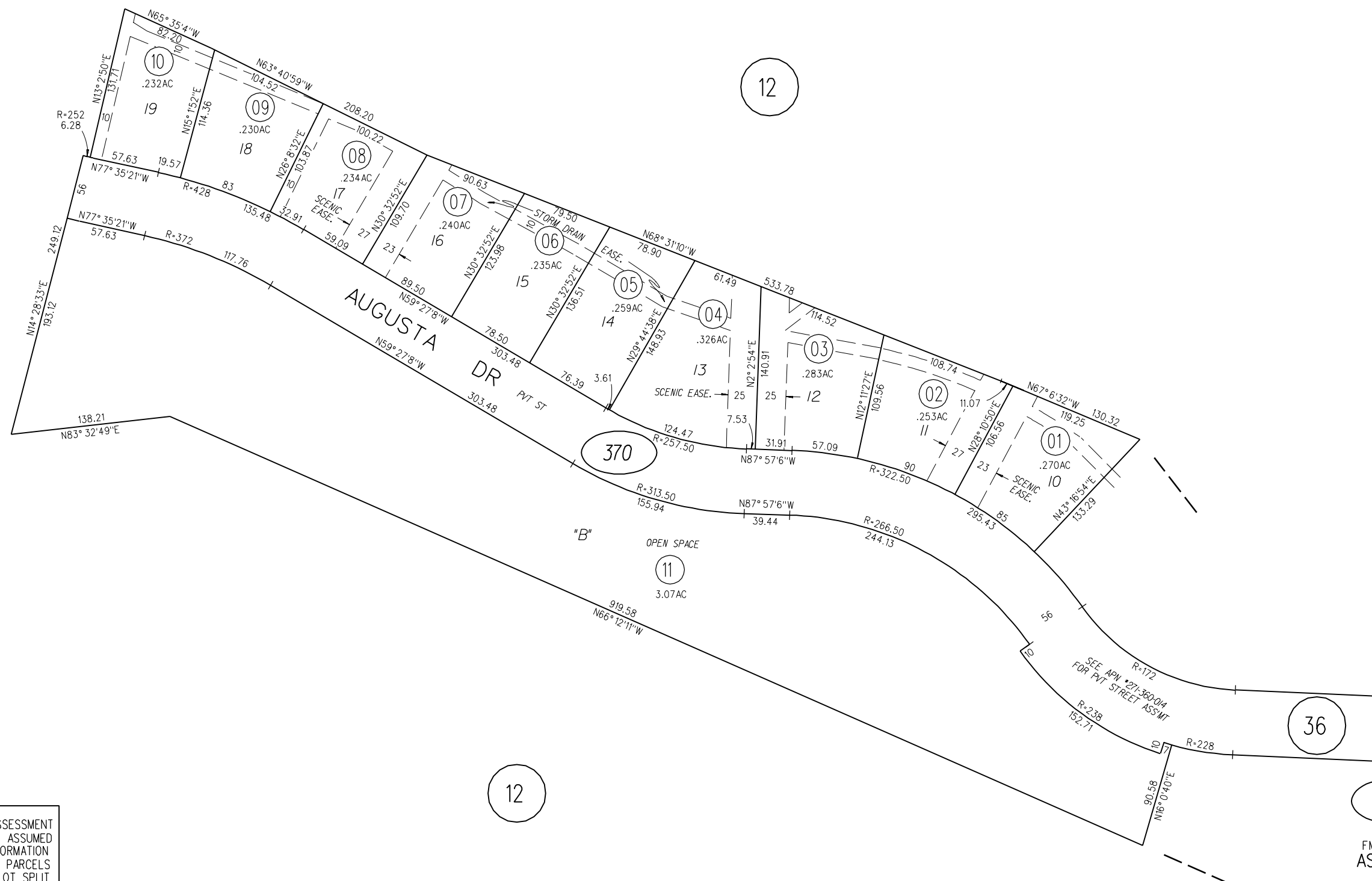
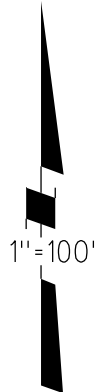


2001 ROLL- POR TRACT 7351 M.B. 418-41 (MORAGA COUNTRY CLUB)



NOTE: THIS MAP WAS PREPARED FOR ASSESSMENT PURPOSES ONLY. NO LIABILITY IS ASSUMED FOR THE ACCURACY OF THE INFORMATION DELINEATED HEREON. ASSESSOR'S PARCELS MAY NOT COMPLY WITH LOCAL LOT SPLIT OR BUILDING SITE ORDINANCES.

370
FM. PG.12 08-01-00
ASSESSOR'S MAP
BOOK 271 PAGE 37
CONTRA COSTA COUNTY, CALIF.