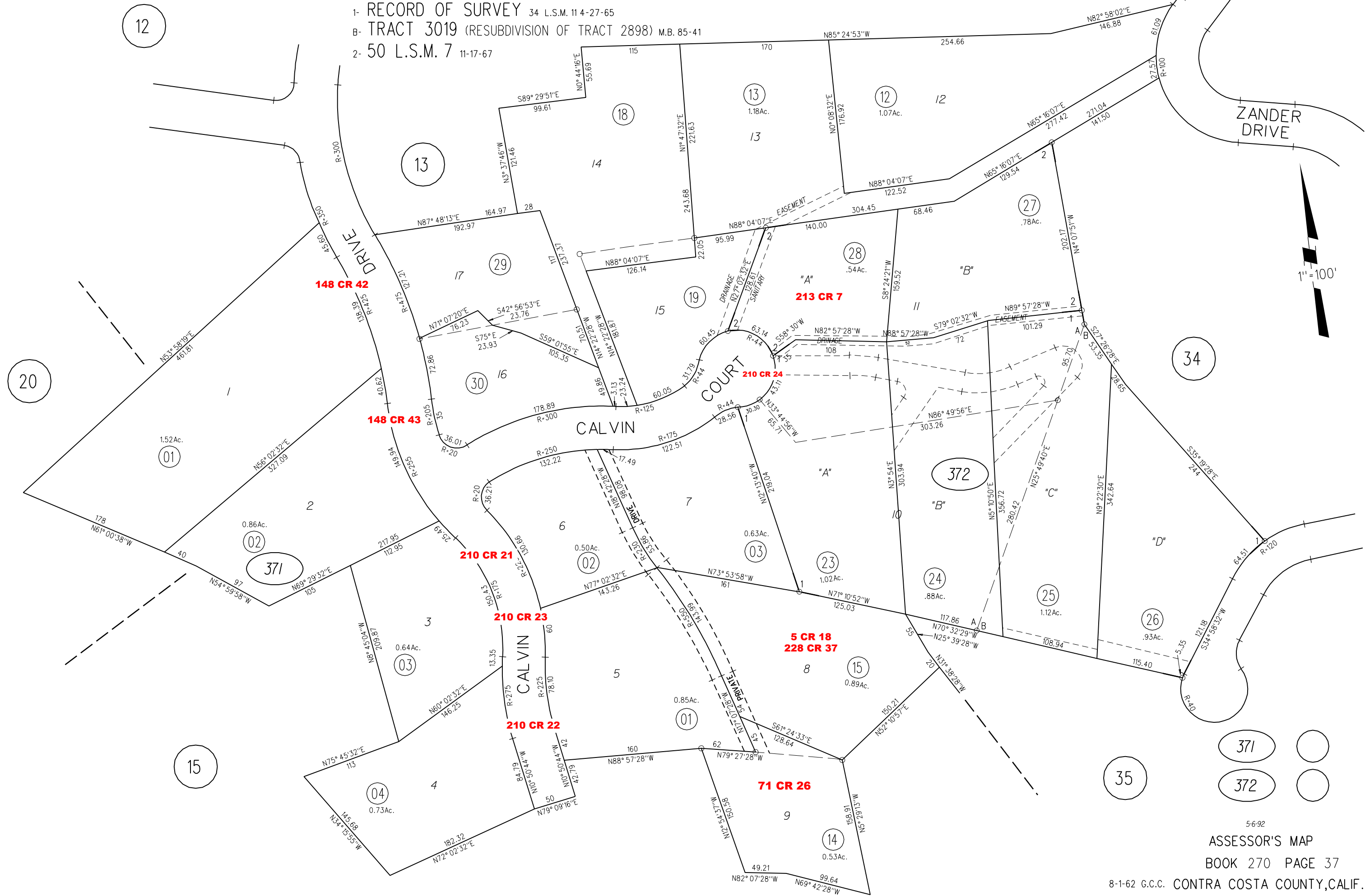


A- TRACT 2810 (RESUBDIVISION POR. TRACTS 2898 & 3019) M.B. 88-19
 1- RECORD OF SURVEY 34 L.S.M. 11 4-27-65
 B- TRACT 3019 (RESUBDIVISION OF TRACT 2898) M.B. 85-41
 2- 50 L.S.M. 7 11-17-67

TAX CODE AREA



371
 372