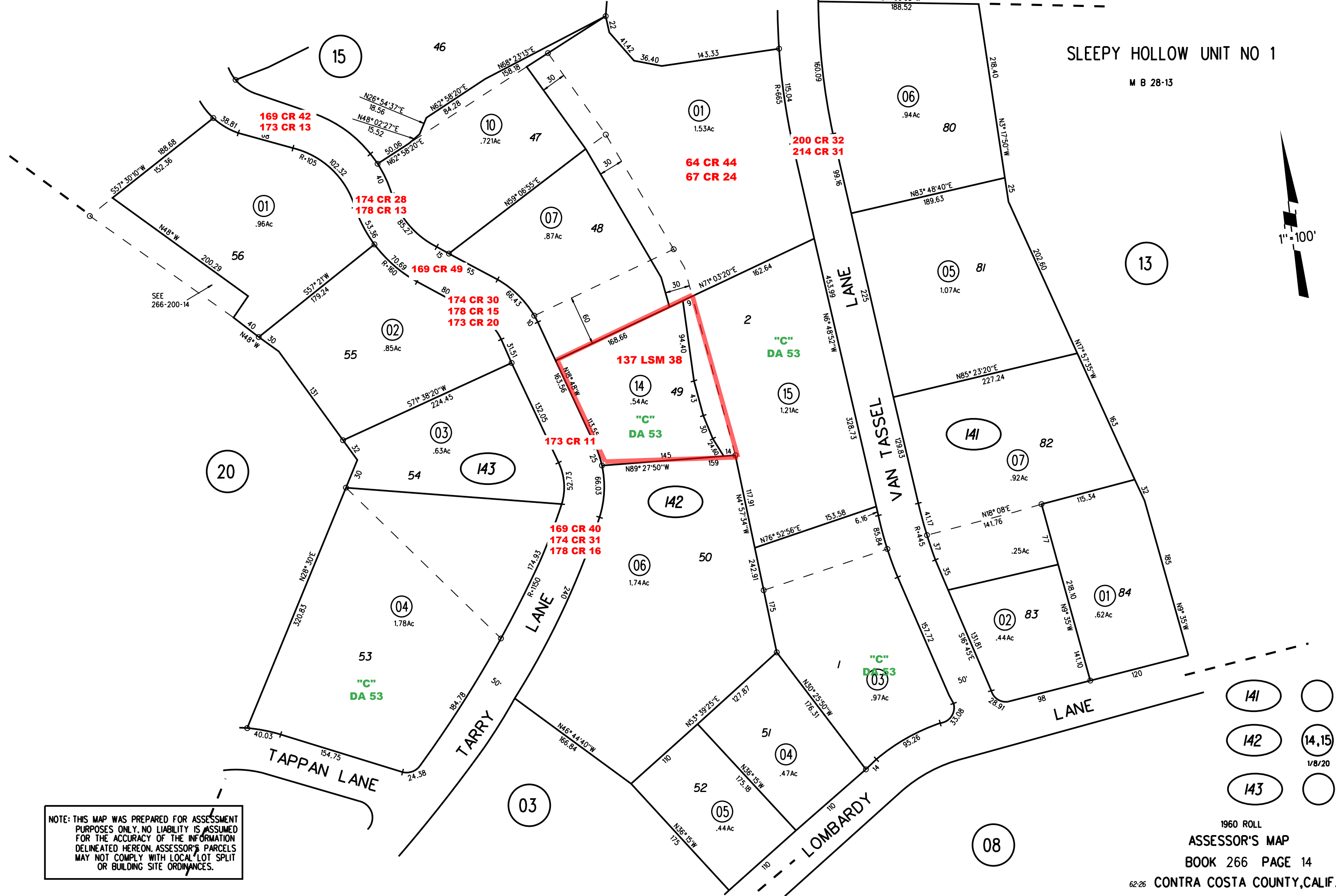


SLEEPY HOLLOW UNIT NO 1

M B 28-13



NOTE: THIS MAP WAS PREPARED FOR ASSESSMENT PURPOSES ONLY. NO LIABILITY IS ASSUMED FOR THE ACCURACY OF THE INFORMATION DELINEATED HEREON. ASSESSOR'S PARCELS MAY NOT COMPLY WITH LOCAL LOT SPLIT OR BUILDING SITE ORDINANCES.

- 141
- 142
- 143

1960 ROLL
ASSESSOR'S MAP
BOOK 266 PAGE 14
CONTRA COSTA COUNTY, CALIF.

Sanborn Date : 12/28/1998