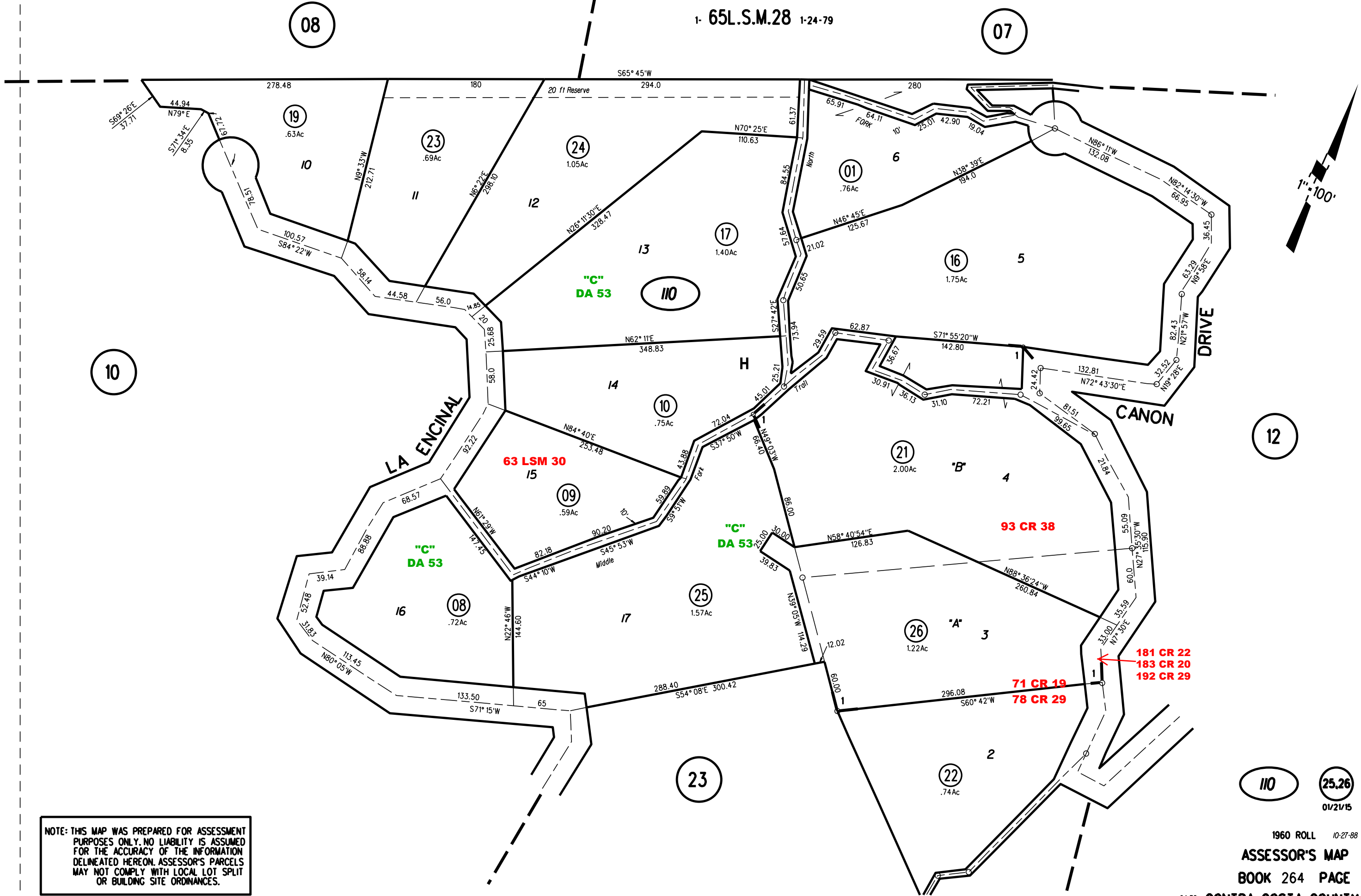


ORINDA PARK TERRACE MB 18-389

1- 65L.S.M.28 1-24-79



NOTE: THIS MAP WAS PREPARED FOR ASSESSMENT PURPOSES ONLY. NO LIABILITY IS ASSUMED FOR THE ACCURACY OF THE INFORMATION DELINEATED HEREON. ASSESSOR'S PARCELS MAY NOT COMPLY WITH LOCAL LOT SPLIT OR BUILDING SITE ORDINANCES.

IIO 25.26
01/21/15

1960 ROLL 10-27-88
ASSESSOR'S MAP
BOOK 264 PAGE 11

64-32 CONTRA COSTA COUNTY, CALIF.