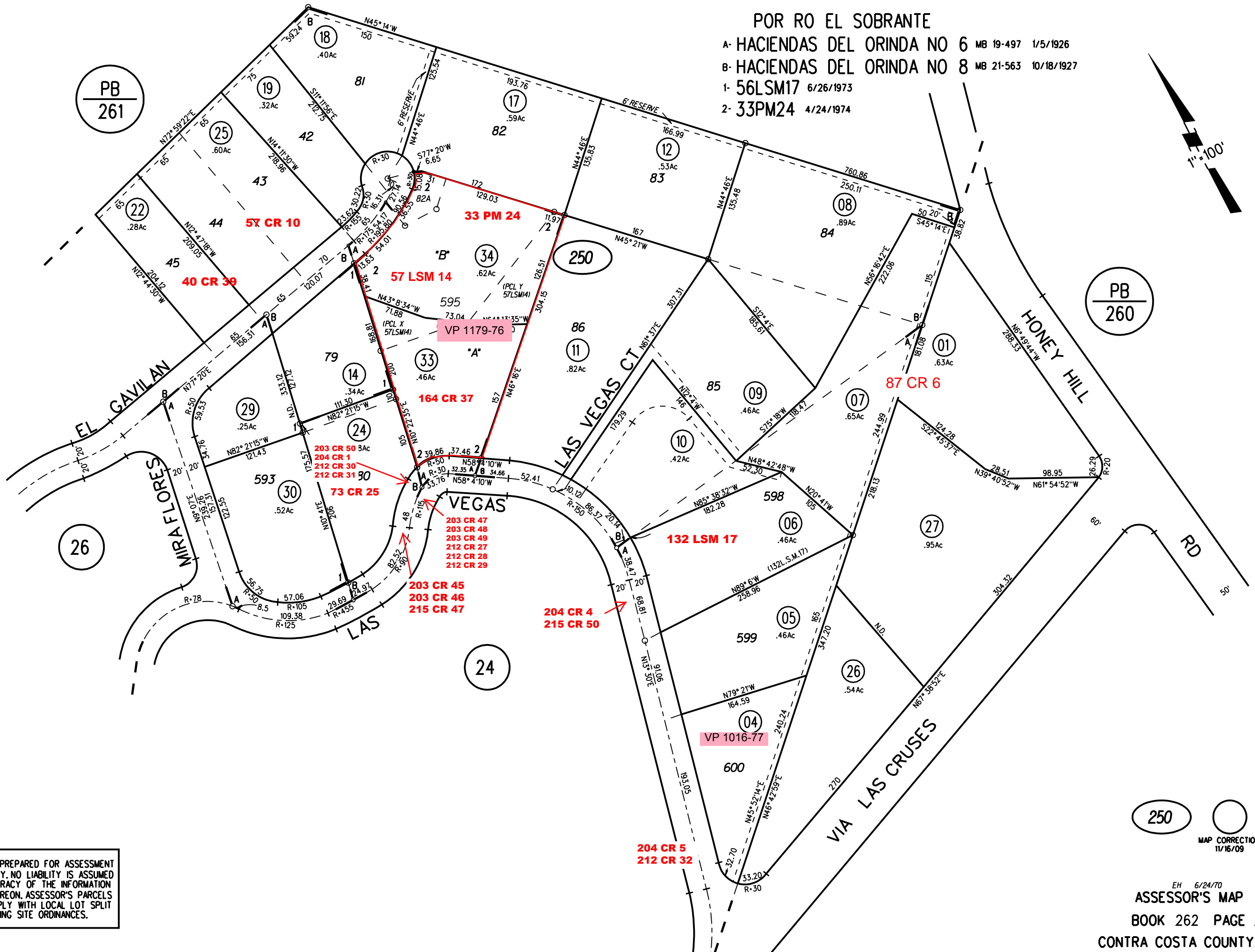


POR RO EL SOBRANTE

- A- HACIENDAS DEL ORINDA NO 6 MB 19-497 1/5/1926
- B- HACIENDAS DEL ORINDA NO 8 MB 21-563 10/18/1927
- 1- 56LSM17 6/26/1973
- 2- 33PM24 4/24/1974

1"=100'



PB  
261

PB  
260

26

24

250

MAP CORRECTION  
11/16/09

NOTE: THIS MAP WAS PREPARED FOR ASSESSMENT PURPOSES ONLY. NO LIABILITY IS ASSUMED FOR THE ACCURACY OF THE INFORMATION DELINEATED HEREON. ASSESSOR'S PARCELS MAY NOT COMPLY WITH LOCAL LOT SPLIT OR BUILDING SITE ORDINANCES.