

POR RO EL SOBRANTE

1- 68LSM6 1/28/80

2- 100PM37 4/9/82

P.B. 262

17

A
4.89Ac
15

RZ 2429-93

ABAND.
10563 OR 71
11-6-81

105 CR 30

B
3.56Ac
16

FCDP 450-83

5693 OR 448
8-21-63
17

DP 3027-81

200

59 LSM 01

ORINDA SCHOOL

05
6.68Ac

CAMINO SOBRANTE

IRWIN WAY

ORINDA WAY

SANTA MARIA WAY

RD.

AL TARINDA

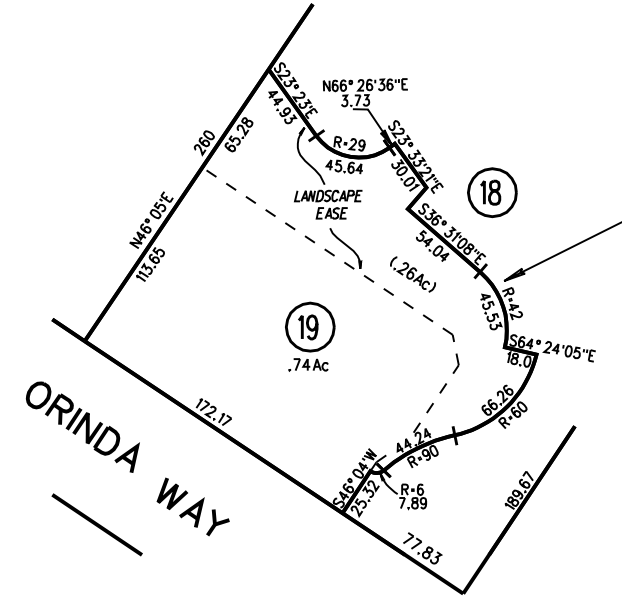
P.B. 265

19

SEE PAGE 21 FOR
M/R ASSESSMENT



1"=200'



SEE DETAIL
NTS

NOTE: THIS MAP WAS PREPARED FOR ASSESSMENT PURPOSES ONLY. NO LIABILITY IS ASSUMED FOR THE ACCURACY OF THE INFORMATION DELINEATED HEREON. ASSESSOR'S PARCELS MAY NOT COMPLY WITH LOCAL LOT SPLIT OR BUILDING SITE ORDINANCES.

200

19

5/8/06