

POR. RO. EL SOBRANTE

P.B.
262

LAS AROMAS
R=300

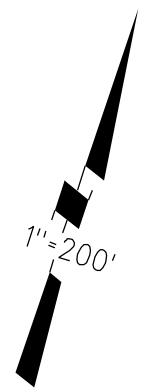
LP 2196-75

P.B.
262

E.B.M.U.D.
D91Ac

Drain Ease
6888 or 831
3-15-73

02



182

EL CAMINITO

NW LINE LOT 1

103 LSM 49

17

LA CUESTA

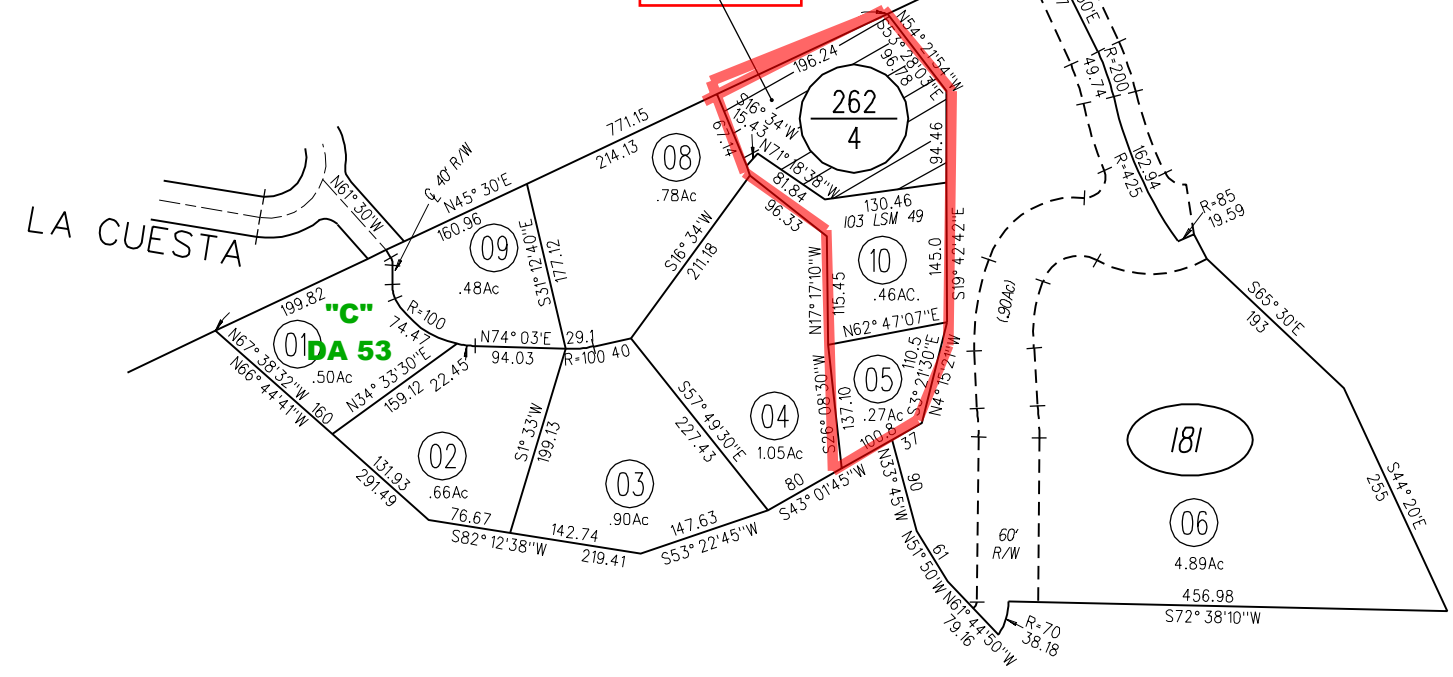
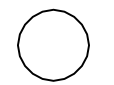
262
4

"C"
DA 53

181

06

181



4-5-89
(6-71)

ASSESSOR'S MAP
BOOK 260 PAGE 18

E.H. 6/28/71 CONTRA COSTA COUNTY, CALIF.