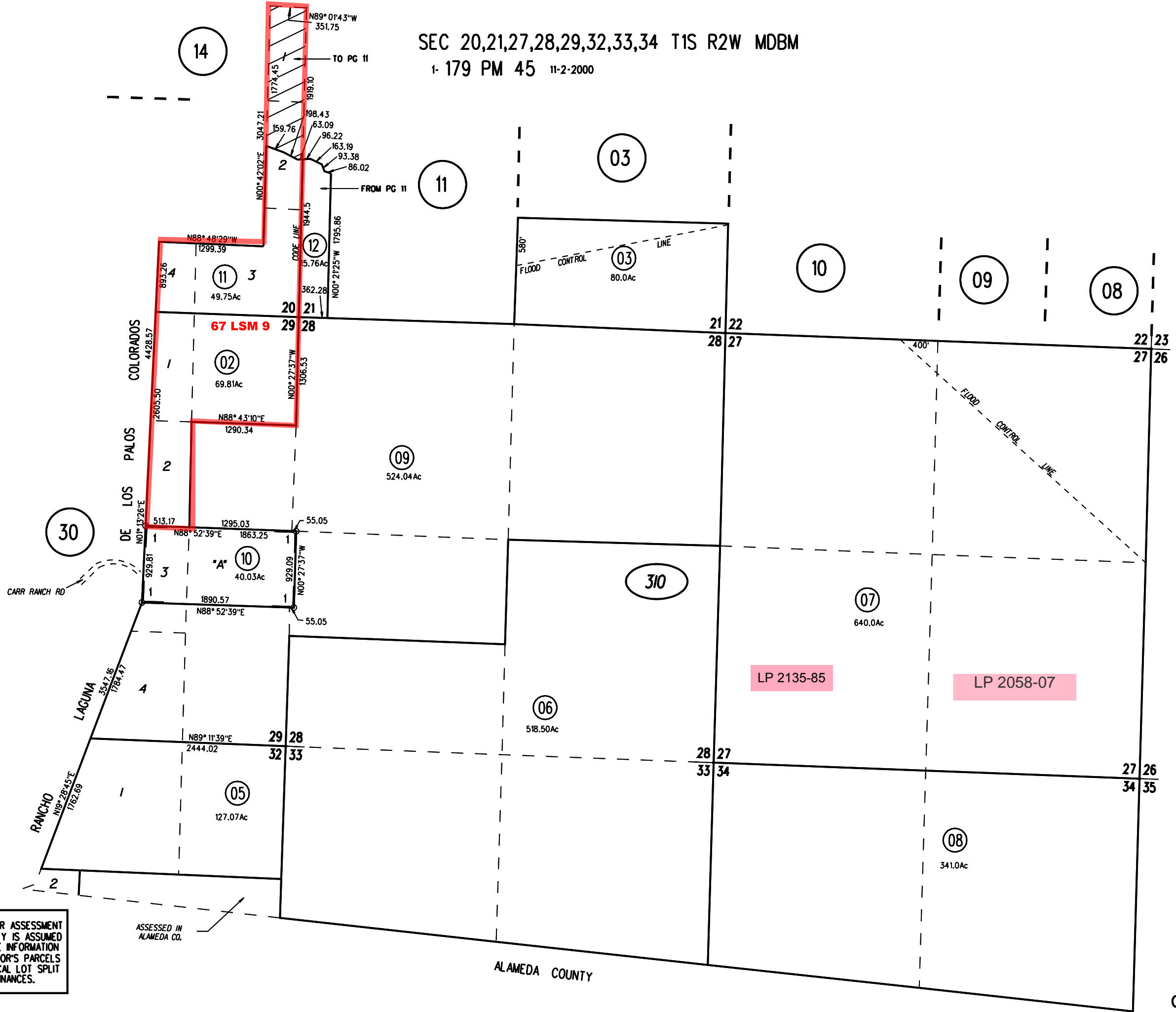


SEC 20,21,27,28,29,32,33,34 T1S R2W MDBM

1- 179 PM 45 11-2-2000



NOTE: THIS MAP WAS PREPARED FOR ASSESSMENT PURPOSES ONLY. NO LIABILITY IS ASSUMED FOR THE ACCURACY OF THE INFORMATION DELINEATED HEREON. ASSESSOR'S PARCELS MAY NOT COMPLY WITH LOCAL LOT SPLIT OR BUILDING SITE ORDINANCES.

ASSESSED IN ALAMEDA CO.

ALAMEDA COUNTY

P.B. 199

310 11,12  
10/25/12