

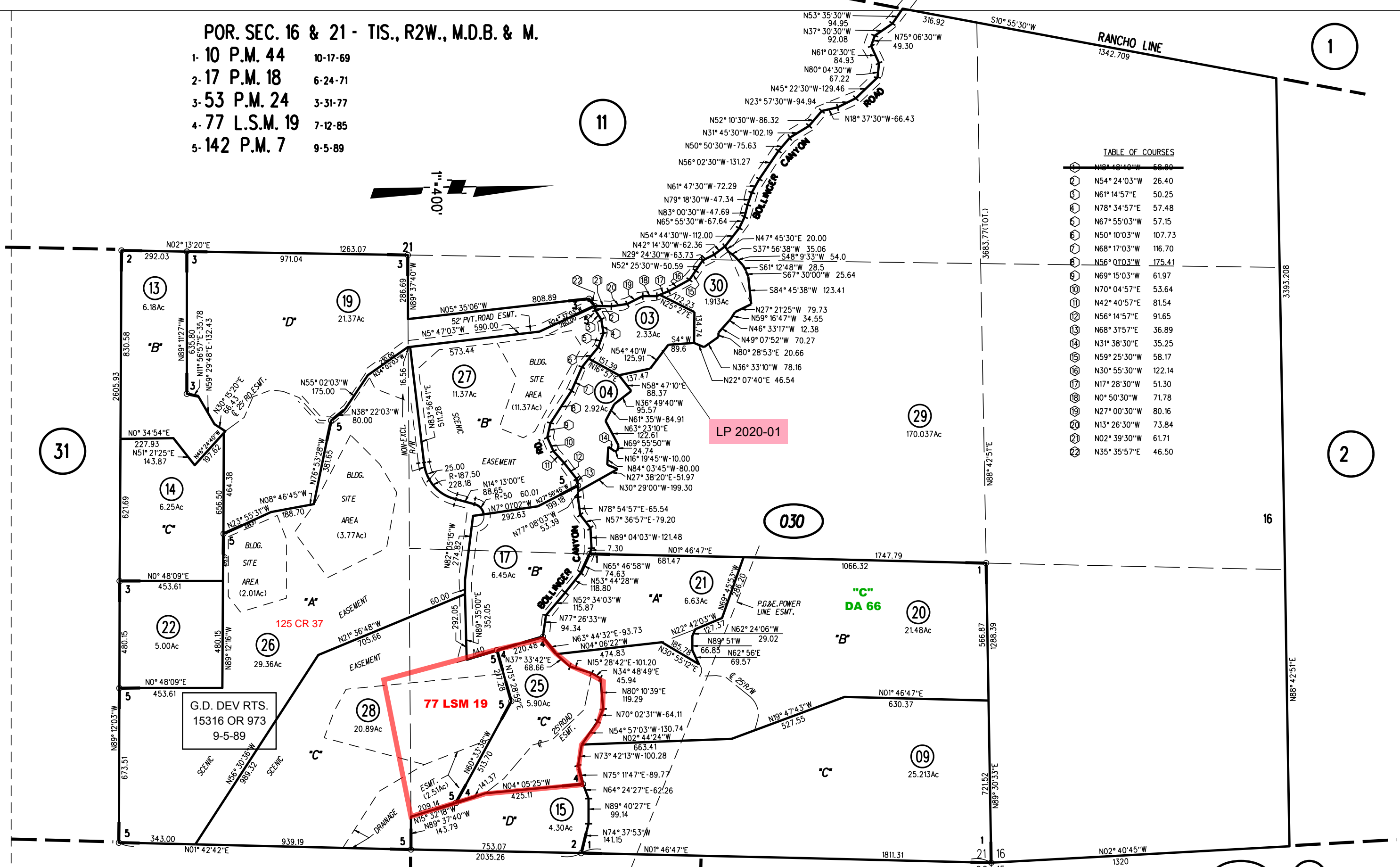
POR. SEC. 16 & 21 - TIS., R2W., M.D.B. & M.

- 1- 10 P.M. 44 10-17-69
- 2- 17 P.M. 18 6-24-71
- 3- 53 P.M. 24 3-31-77
- 4- 77 L.S.M. 19 7-12-85
- 5- 142 P.M. 7 9-5-89



TABLE OF COURSES

1	N88° 18' 48" W	68.80
2	N54° 24' 03" W	26.40
3	N61° 14' 57" E	50.25
4	N78° 34' 57" E	57.48
5	N67° 55' 03" W	57.15
6	N50° 10' 03" W	107.73
7	N68° 17' 03" W	116.70
8	N56° 01' 03" W	175.41
9	N69° 15' 03" W	61.97
10	N70° 04' 57" E	53.64
11	N42° 40' 57" E	81.54
12	N56° 14' 57" E	91.65
13	N68° 31' 57" E	36.89
14	N31° 38' 30" E	35.25
15	N59° 25' 30" W	58.17
16	N30° 55' 30" W	122.14
17	N17° 28' 30" W	51.30
18	N0° 50' 30" W	71.78
19	N27° 00' 30" W	80.16
20	N13° 26' 30" W	73.84
21	N02° 39' 30" W	61.71
22	N35° 35' 57" E	46.50



G.D. DEV RTS.
15316 OR 973
9-5-89

LP 2020-01

030 DA 66

NOTE: THIS MAP WAS PREPARED FOR ASSESSMENT PURPOSES ONLY. NO LIABILITY IS ASSUMED FOR THE ACCURACY OF THE INFORMATION DELINEATED HEREON. ASSESSOR'S PARCELS MAY NOT COMPLY WITH LOCAL LOT SPLIT OR BUILDING SITE ORDINANCES.

030 29,30 01/20/15

ASSESSOR'S MAP
BOOK 258 PAGE 03

4-16-90 CONTRA COSTA COUNTY, CALIF.