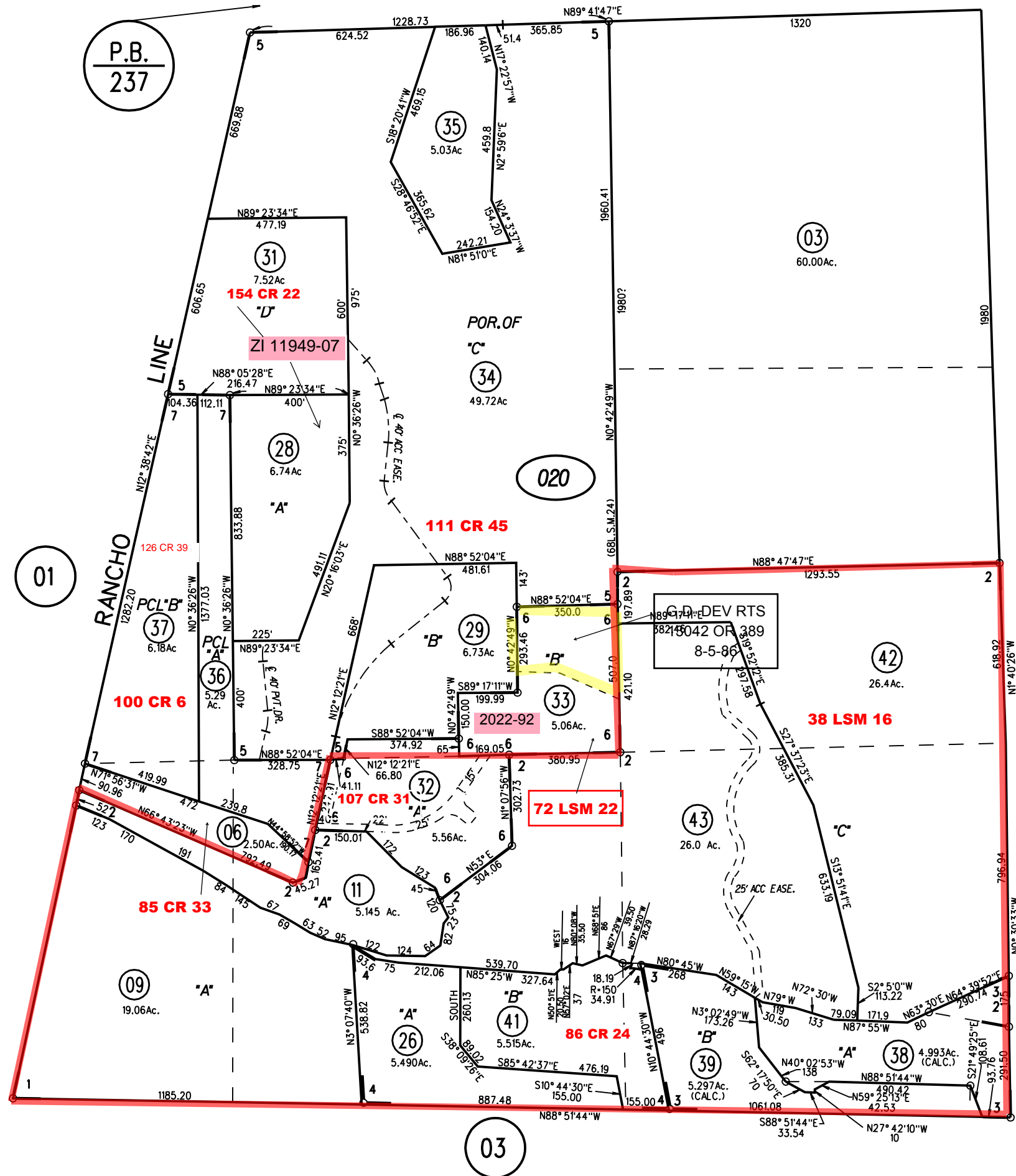


POR SEC 16 T1S, R2W, MDB&M

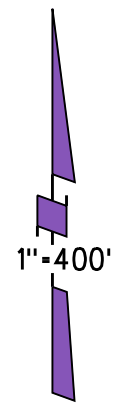
1977 1 - 38LSM16 11-10-65

- 2- 47PM43 9-7-76
- 3- 97PM13 8-20-81
- 4- 111PM18 8-14-84
- 5- 121PM37 2-28-86
- 6- 123PM29 8-5-86
- 7- 157PM32 2-19-92



P.B. 237

P.B. 189



NOTE: THIS MAP WAS PREPARED FOR ASSESSMENT PURPOSES ONLY. NO LIABILITY IS ASSUMED FOR THE ACCURACY OF THE INFORMATION DELINEATED HEREON. ASSESSOR'S PARCELS MAY NOT COMPLY WITH LOCAL LOT SPLIT OR BUILDING SITE ORDINANCES.

020 43
1/10/08