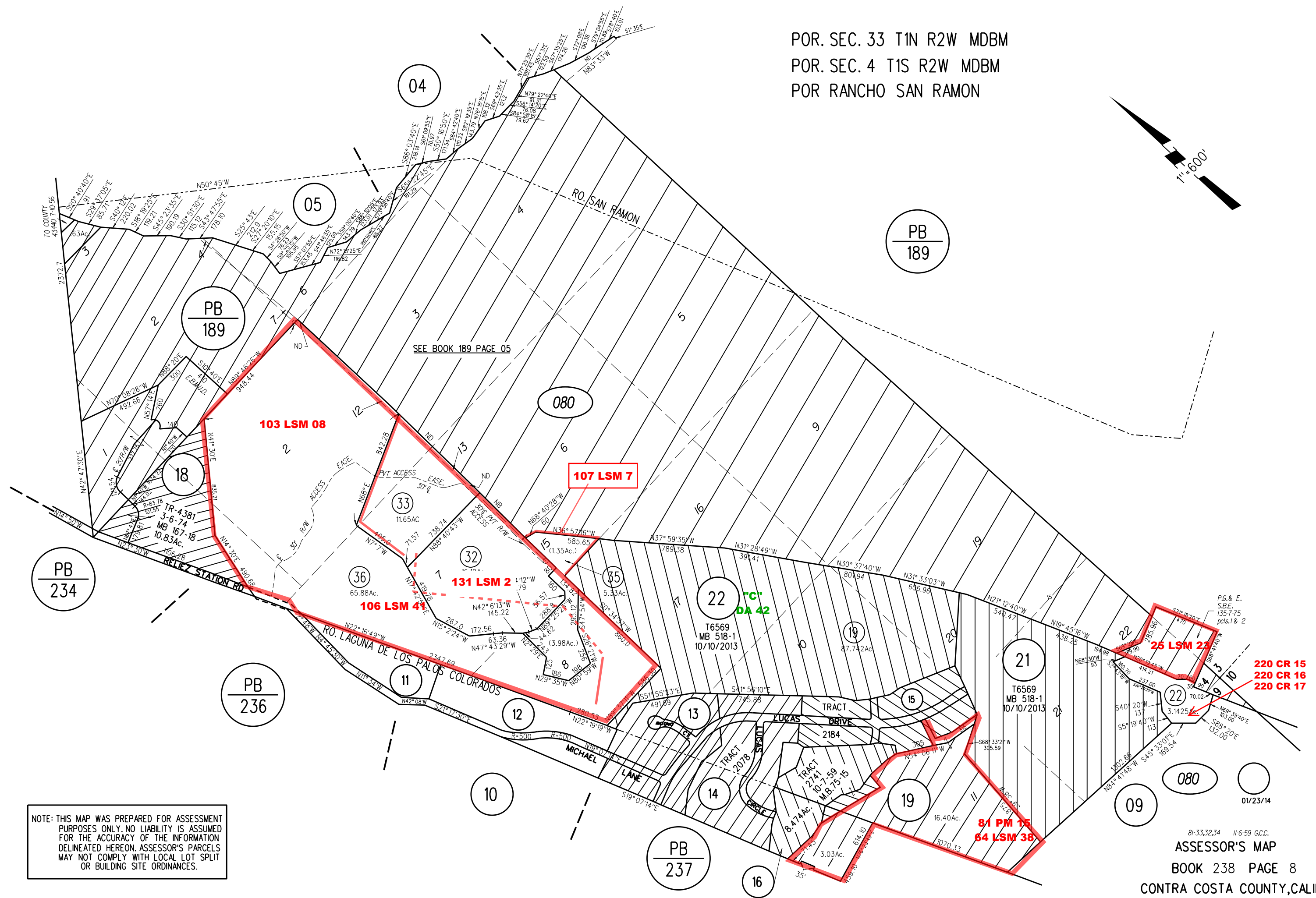
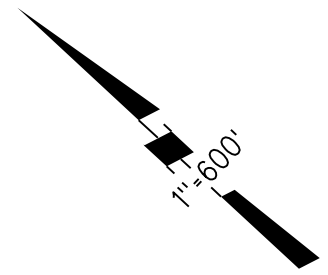


POR. SEC. 33 T1N R2W MDBM
 POR. SEC. 4 T1S R2W MDBM
 POR RANCHO SAN RAMON



PB
234

PB
189

PB
236

PB
237

PB
189

09

81-33,32,34 11-6-59 G.C.C.
 ASSESSOR'S MAP
 BOOK 238 PAGE 8
 CONTRA COSTA COUNTY, CALIF.