

RANCHO LAGUNA DE LOS PALOS COLORADOS

1- 12P.M. 32 -4-30-70

2- 26P.M. 22 2-15-73

PLEASANT HILL RD.

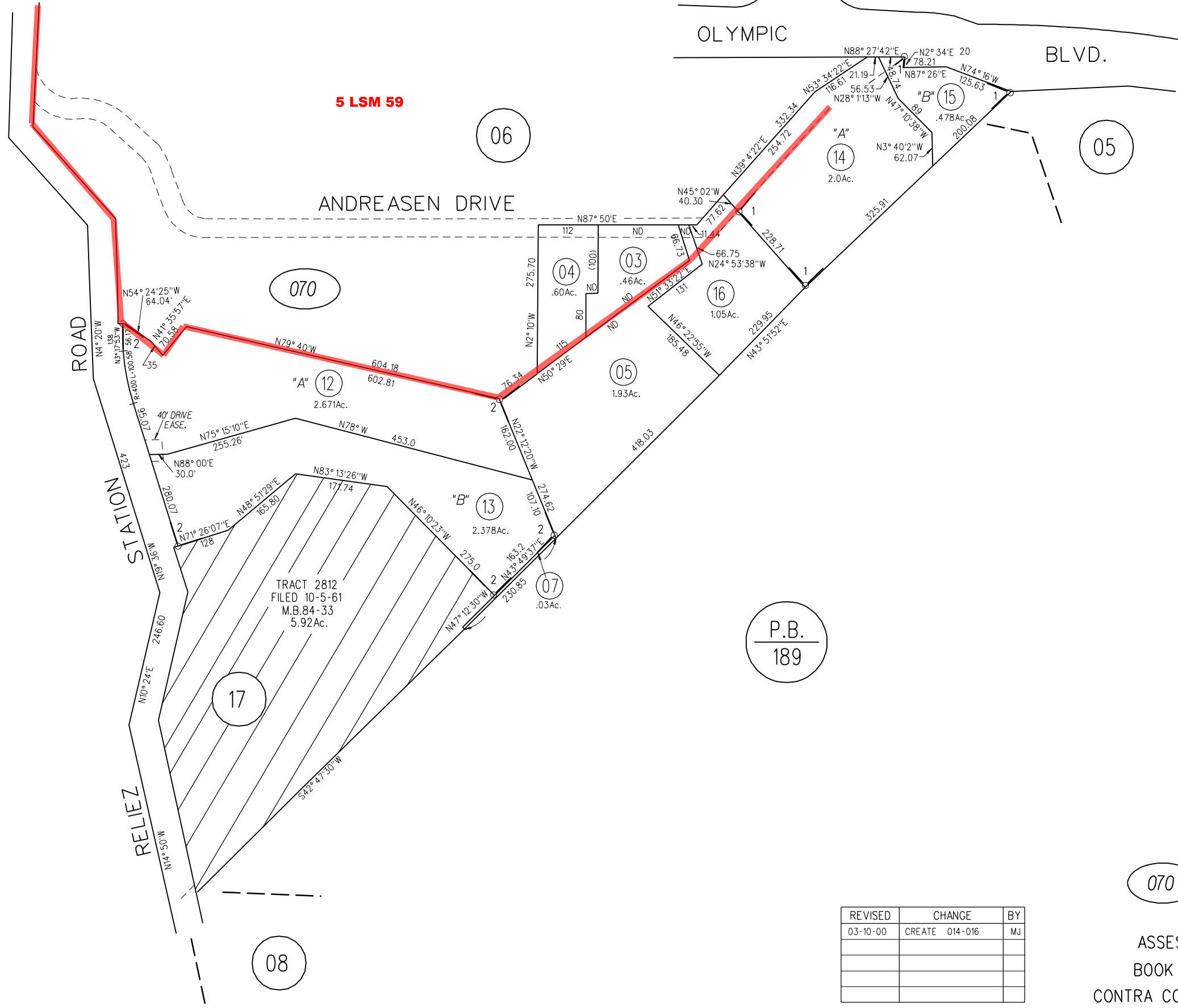
OLYMPIC

BLVD.

5 LSM 59

1" = 200'

PB
234



P.B.
189

070

REVISED	CHANGE	BY
03-10-00	CREATE 014-016	MJ

ASSESSOR'S MAP
 BOOK 238 PAGE 07
 CONTRA COSTA COUNTY, CALIF.