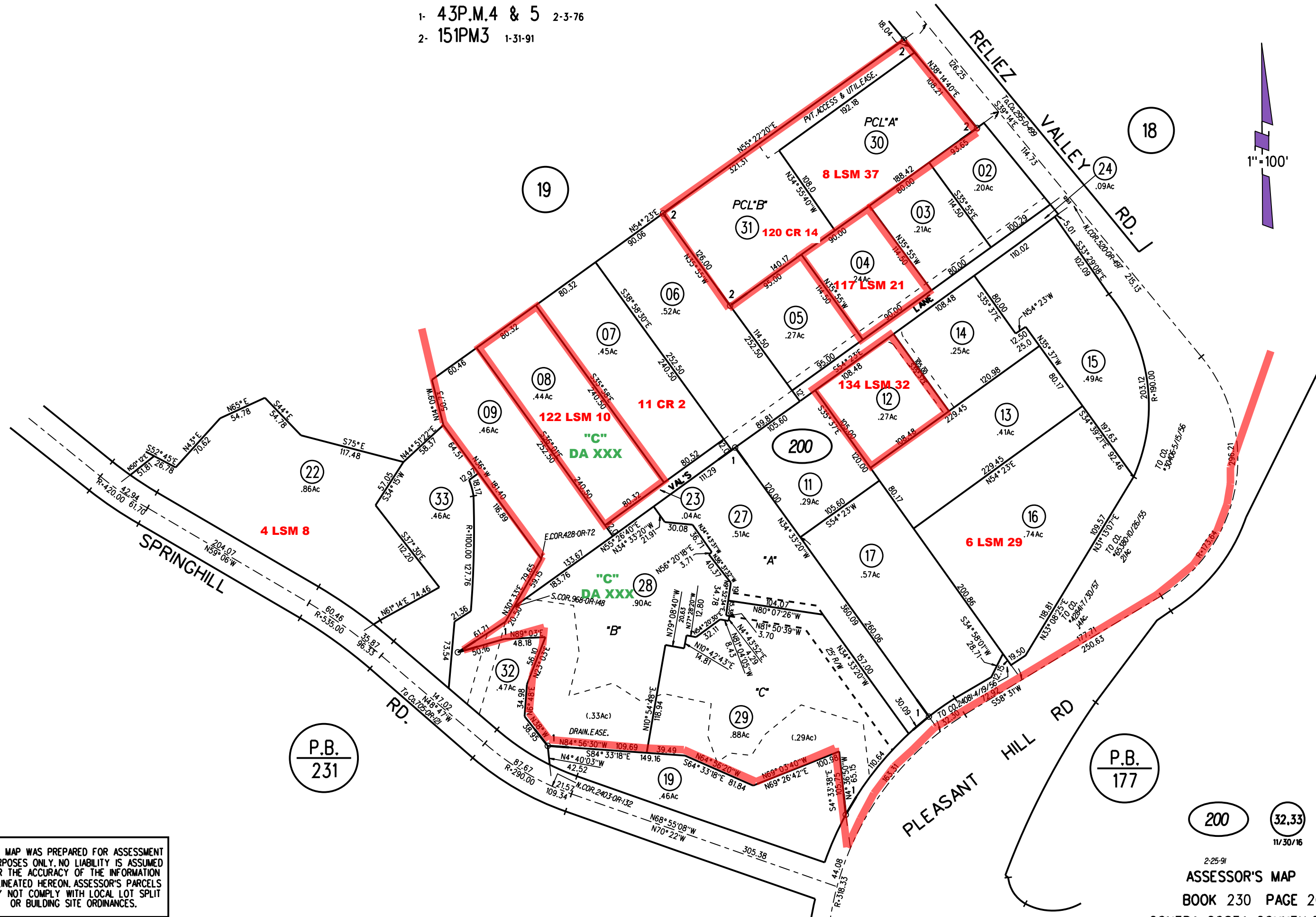
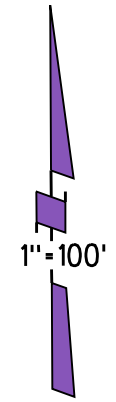


RO. CANADA DEL HAMBRE

1- 43P.M.4 & 5 2-3-76

2- 151PM3 1-31-91



NOTE: THIS MAP WAS PREPARED FOR ASSESSMENT PURPOSES ONLY. NO LIABILITY IS ASSUMED FOR THE ACCURACY OF THE INFORMATION DELINEATED HEREON. ASSESSOR'S PARCELS MAY NOT COMPLY WITH LOCAL LOT SPLIT OR BUILDING SITE ORDINANCES.

2-25-91
ASSESSOR'S MAP
BOOK 230 PAGE 20
CONTRA COSTA COUNTY, CALIF.
H.R. 1959