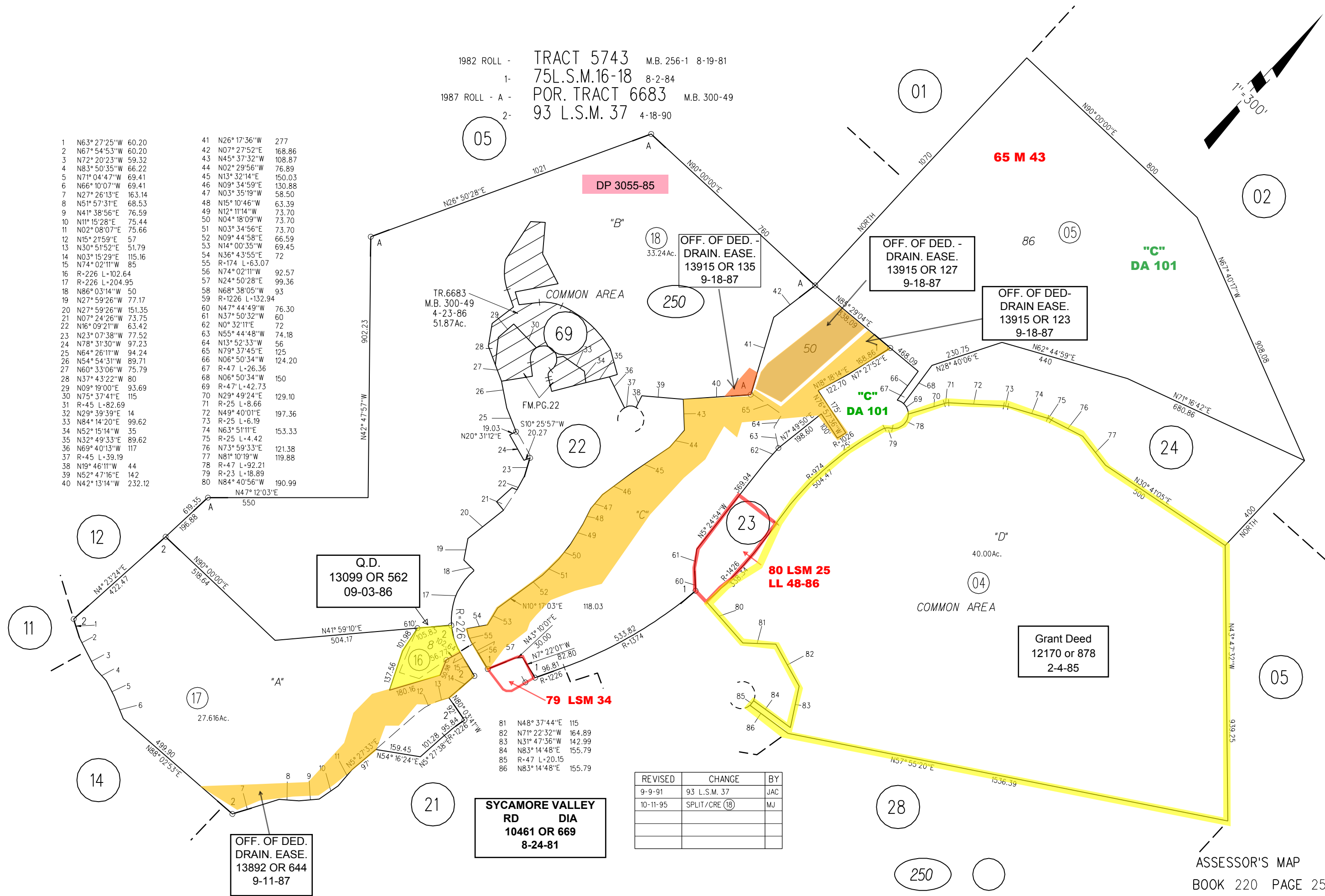


1982 ROLL - TRACT 5743 M.B. 256-1 8-19-81
 1- 75L.S.M.16-18 8-2-84
 1987 ROLL - A - POR. TRACT 6683 M.B. 300-49
 2- 93 L.S.M. 37 4-18-90

- | | | | | | |
|----|----------------|--------|----|-----------------|--------|
| 1 | N63° 27'25"W | 60.20 | 41 | N26° 17'36"W | 277 |
| 2 | N67° 54'53"W | 60.20 | 42 | N07° 27'52"E | 168.86 |
| 3 | N72° 20'23"W | 59.32 | 43 | N45° 37'32"W | 108.87 |
| 4 | N83° 50'35"W | 66.22 | 44 | N02° 29'56"W | 76.89 |
| 5 | N71° 04'47"W | 69.41 | 45 | N13° 32'14"E | 150.03 |
| 6 | N66° 10'07"W | 69.41 | 46 | N09° 34'59"E | 130.88 |
| 7 | N27° 26'13"E | 163.14 | 47 | N03° 35'19"W | 58.50 |
| 8 | N51° 57'31"E | 68.53 | 48 | N15° 10'46"W | 63.39 |
| 9 | N41° 38'56"E | 76.59 | 49 | N12° 11'14"W | 73.70 |
| 10 | N11° 15'28"E | 75.44 | 50 | N04° 18'09"W | 73.70 |
| 11 | N02° 08'07"E | 75.66 | 51 | N03° 34'56"E | 73.70 |
| 12 | N15° 21'59"E | 57 | 52 | N09° 44'58"E | 66.59 |
| 13 | N30° 51'52"E | 51.79 | 53 | N14° 00'35"W | 69.45 |
| 14 | N03° 15'29"E | 115.16 | 54 | N36° 43'55"E | 72 |
| 15 | N74° 02'11"W | 85 | 55 | R-174 L-63.07 | |
| 16 | R-226 L-102.64 | | 56 | N74° 02'11"W | 92.57 |
| 17 | R-226 L-204.95 | | 57 | N24° 50'28"E | 99.36 |
| 18 | N86° 03'14"W | 50 | 58 | N68° 38'05"W | 93 |
| 19 | N27° 59'26"W | 77.17 | 59 | R-1226 L-132.94 | |
| 20 | N27° 59'26"W | 151.35 | 60 | N47° 44'49"W | 76.30 |
| 21 | N07° 24'26"W | 73.75 | 61 | N37° 50'32"W | 60 |
| 22 | N16° 09'21"W | 63.42 | 62 | N0° 32'11"E | 72 |
| 23 | N23° 07'38"W | 77.52 | 63 | N55° 44'48"W | 74.18 |
| 24 | N78° 31'30"W | 97.23 | 64 | N13° 52'33"W | 56 |
| 25 | N64° 26'11"W | 94.24 | 65 | N79° 37'45"E | 125 |
| 26 | N54° 54'31"W | 89.71 | 66 | N06° 50'34"W | 124.20 |
| 27 | N60° 33'06"W | 75.79 | 67 | R-47 L-26.36 | |
| 28 | N37° 43'22"W | 80 | 68 | N06° 50'34"W | 150 |
| 29 | N09° 19'00"E | 93.69 | 69 | R-47 L-42.73 | |
| 30 | N75° 37'41"E | 115 | 70 | N29° 49'24"E | 129.10 |
| 31 | R-45 L-82.69 | | 71 | R-25 L-8.66 | |
| 32 | N29° 39'39"E | 14 | 72 | N49° 40'01"E | 197.36 |
| 33 | N84° 14'20"E | 99.62 | 73 | R-25 L-6.19 | |
| 34 | N52° 15'14"W | 35 | 74 | N63° 51'11"E | 153.33 |
| 35 | N32° 49'33"E | 89.62 | 75 | R-25 L-4.42 | |
| 36 | N69° 40'13"W | 117 | 76 | N73° 59'33"E | 121.38 |
| 37 | R-45 L-39.19 | | 77 | N81° 10'19"W | 119.88 |
| 38 | N19° 46'11"W | 44 | 78 | R-47 L-92.21 | |
| 39 | N52° 47'16"E | 142 | 79 | R-23 L-18.89 | |
| 40 | N42° 13'14"W | 232.12 | 80 | N84° 40'56"W | 190.99 |



Q.D.
 13099 OR 562
 09-03-86

OFF. OF DED.
 DRAIN. EASE.
 13892 OR 644
 9-11-87

SYCAMORE VALLEY
 RD DIA
 10461 OR 669
 8-24-81

REVISED	CHANGE	BY
9-9-91	93 L.S.M. 37	JAC
10-11-95	SPLIT/CRE (18)	MJ

Grant Deed
 12170 or 878
 2-4-85