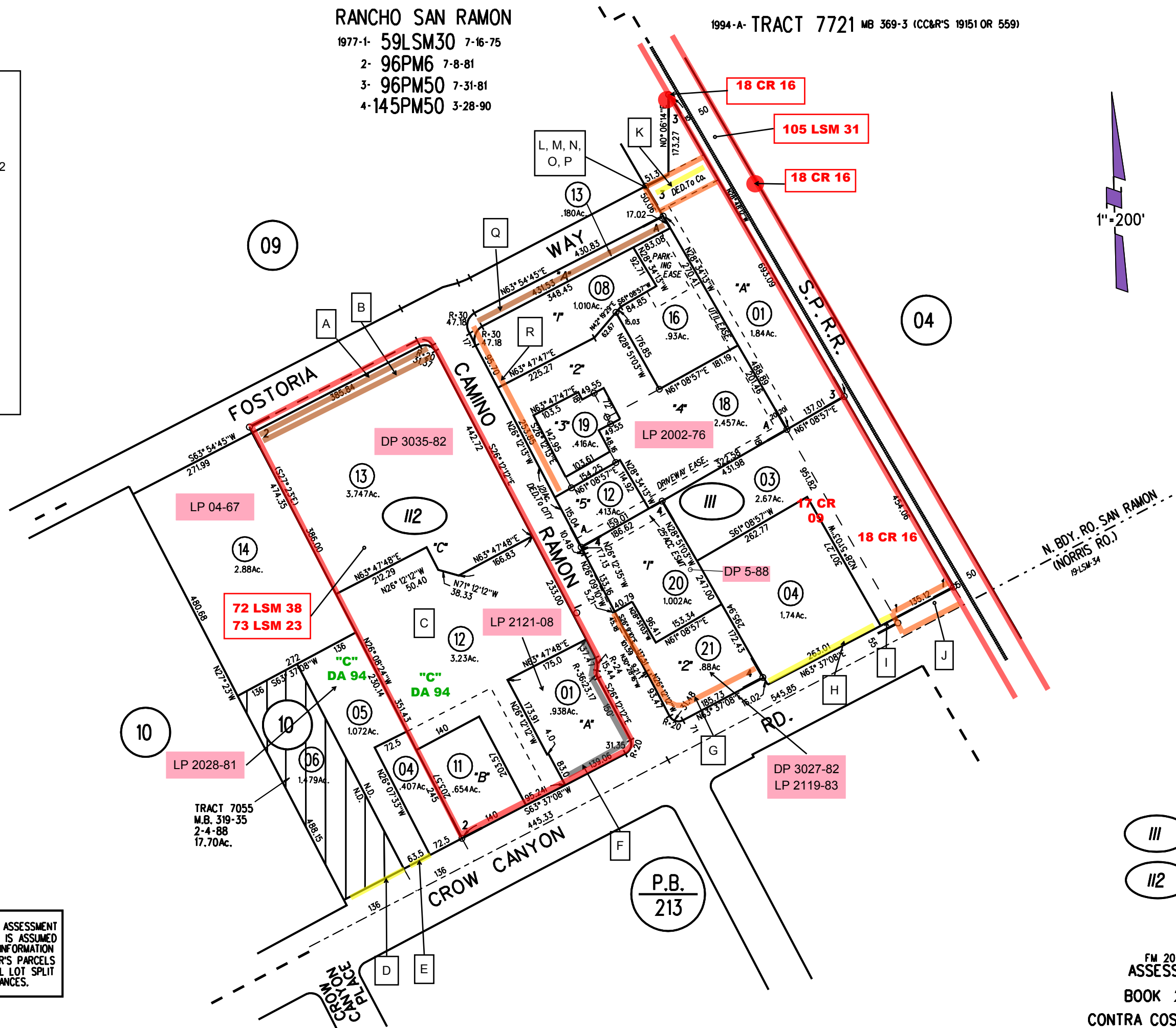


RANCHO SAN RAMON

1977-1- 59LSM30 7-16-75
 2- 96PM6 7-8-81
 3- 96PM50 7-31-81
 4- 145PM50 3-28-90

1994-A- TRACT 7721 MB 369-3 (CC&R'S 19151 OR 559)

- A- DIA 11160 OR 271 03-27-83
- B- DIA 10397 OR 257 07-08-81
- C- OFF. DED. 8813 OR 666
 ACC. 9668 OR 631 12-20-79
- D- GD 10235 OR 91 03-12-81
- E- GD 9955 OR 866 08-14-80
- F- REL. ABUT. RTS. 10950 OR 959 09-29-82
- G- OFF. DED. 8693 OR 931 -21-78
 ACC. 9668 OR 630 12-20-79
- H- GD 10235 OR 912 03-12-81
- I- GD 10235 OR 909 03-12-81
- J- OFF DED. 6359 OR 290 04-14-71
 ACC. 9668 OR 628 11-20-79
- K- GD 10265 OR 884 04-02-81
- L- CON. TO OFF. 10431 OR 550 07-31-81
- M- CON. TO OFF. 10431 OR 540 07-31-81
- N- CON. TO OFF. 10431 OR 544 07-31-81
- O- OFF. DED. 9243 OR 701 05-07-80
- P- OFF. DED. 9843 OR 701
- Q- DIA 10431 OR 532 07-31-81
- R- OFF. DED. 7914 OR 927 08-12-76
 ACC. 9668 OR 629 12-20-79



NOTE: THIS MAP WAS PREPARED FOR ASSESSMENT PURPOSES ONLY. NO LIABILITY IS ASSUMED FOR THE ACCURACY OF THE INFORMATION DELINEATED HEREON. ASSESSOR'S PARCELS MAY NOT COMPLY WITH LOCAL LOT SPLIT OR BUILDING SITE ORDINANCES.