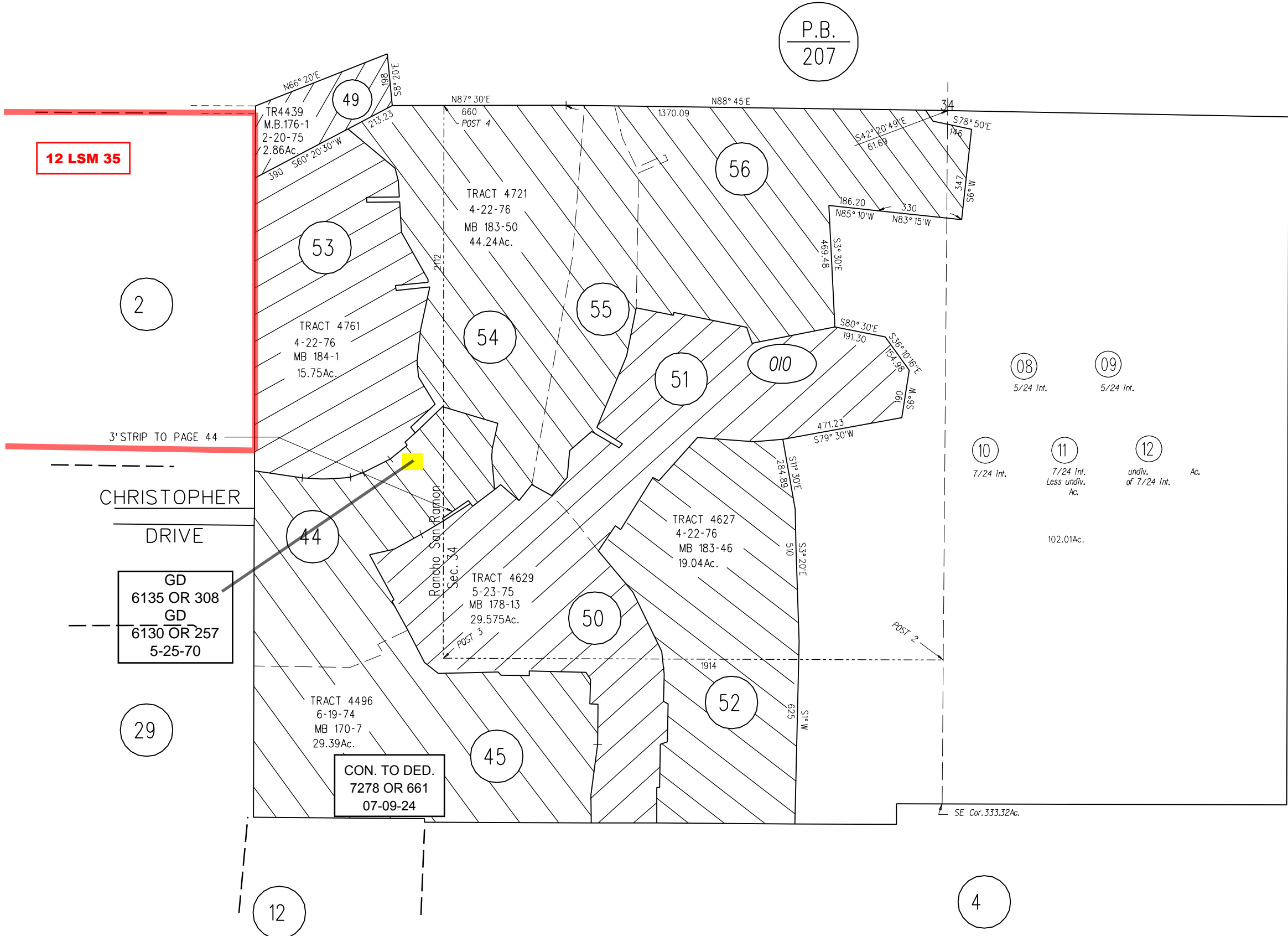


POR 34 T.1S., R.1W., M.D.B.M.  
RANCHO SAN RAMON

P.B.  
207

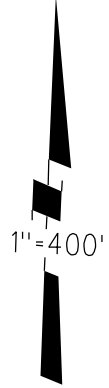
12 LSM 35



CHRISTOPHER  
DRIVE

GD  
6135 OR 308  
GD  
6130 OR 257  
5-25-70

CON. TO DED.  
7278 OR 661  
07-09-24



P.B.  
217

010