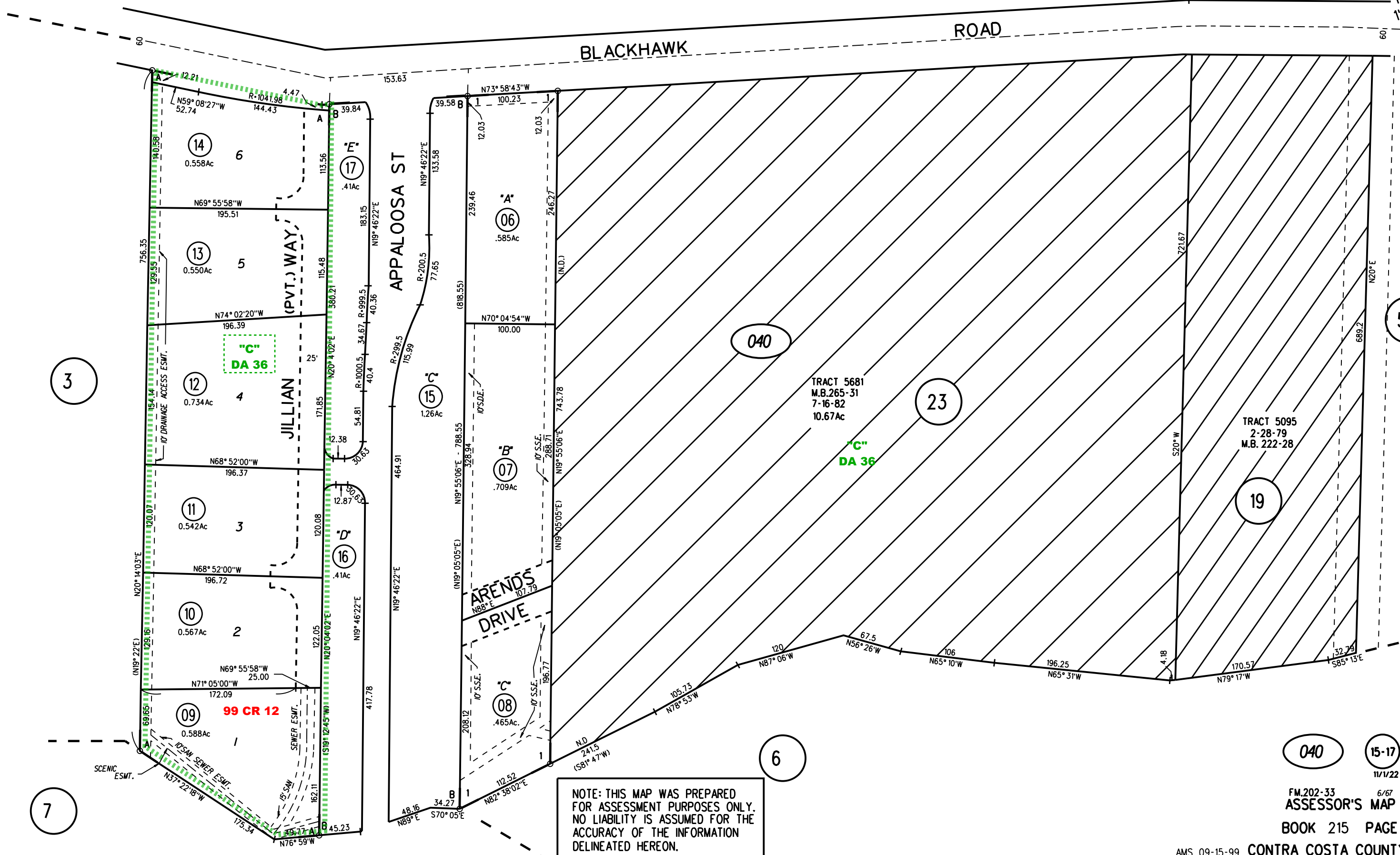
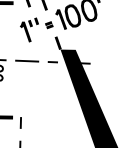


POR. SEC. 23, T.1S., R.1W., M.D.B.M.

1-1985 ROLL - 113 P.M.9&10 11-6-84
A-1998 ROLL - TRACT 7985 M.B. 392-47
B-2023 ROLL - POR TR 9291 M.B. 552-5

P.B.
203



040 15-17
11/1/22

FM.202-33 6/67
ASSESSOR'S MAP

BOOK 215 PAGE 04