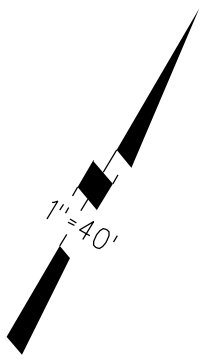


1985 ROLL - TRACT 6148 M.B.272-30 "THE FOOTHILLS"(CONDO.)
 C.C.&R.'S 11773/360 5-3-84 (LOT 10)
 SUPPL. C.C.&R.'S 12062/354 11-13-84 (LOT 11)
 SUPPL. C.C.&R.'S 12508/437 9-16-85



14

15

BOULEVARD
 ALCOSTA

N39°22'57"W
54.91

SLOPE EASE.

N72°33'17"W
76.25

N69°24'02"W
283.76

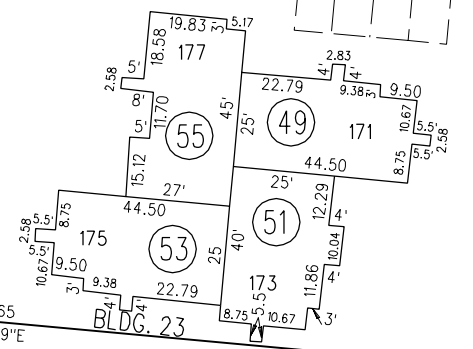
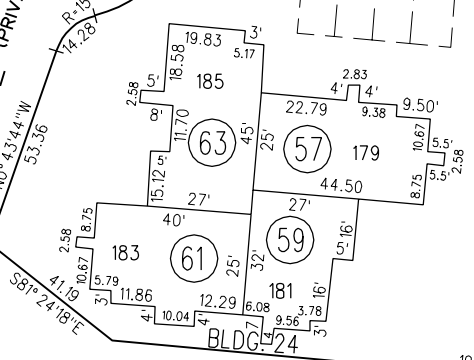
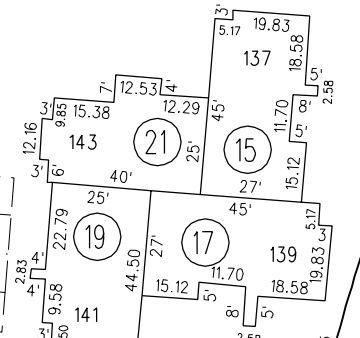
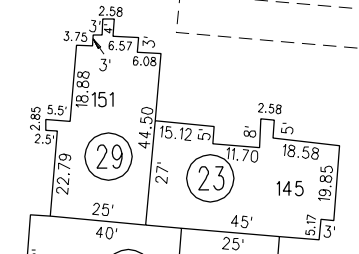
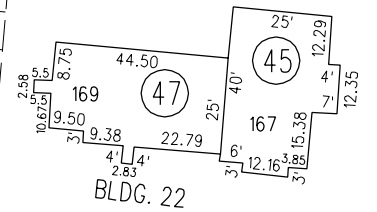
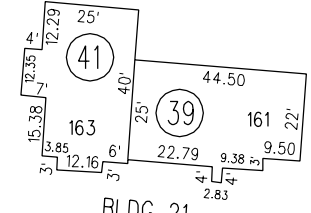
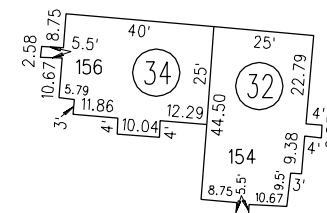
29

565.22

N64°45'26"E

226.47

15

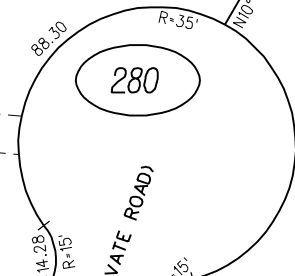


LOT 9
 COMMON AREA

LOT 8
 COMMON AREA

66
 3.061Ac.

65
 1.513Ac.



16

TERRACE (PRIVATE ROAD)
 CANYON
 NORRIS

FIRST LEVEL

239.13
 N70°43'45"E

30

31

280

04

FM. 213-28 5-24-84

ASSESSOR'S MAP

BOOK 213 PAGE 28S-1

CONTRA COSTA COUNTY, CALIF.