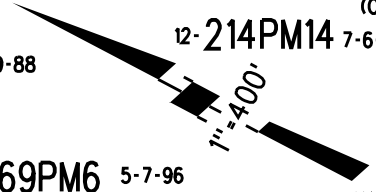
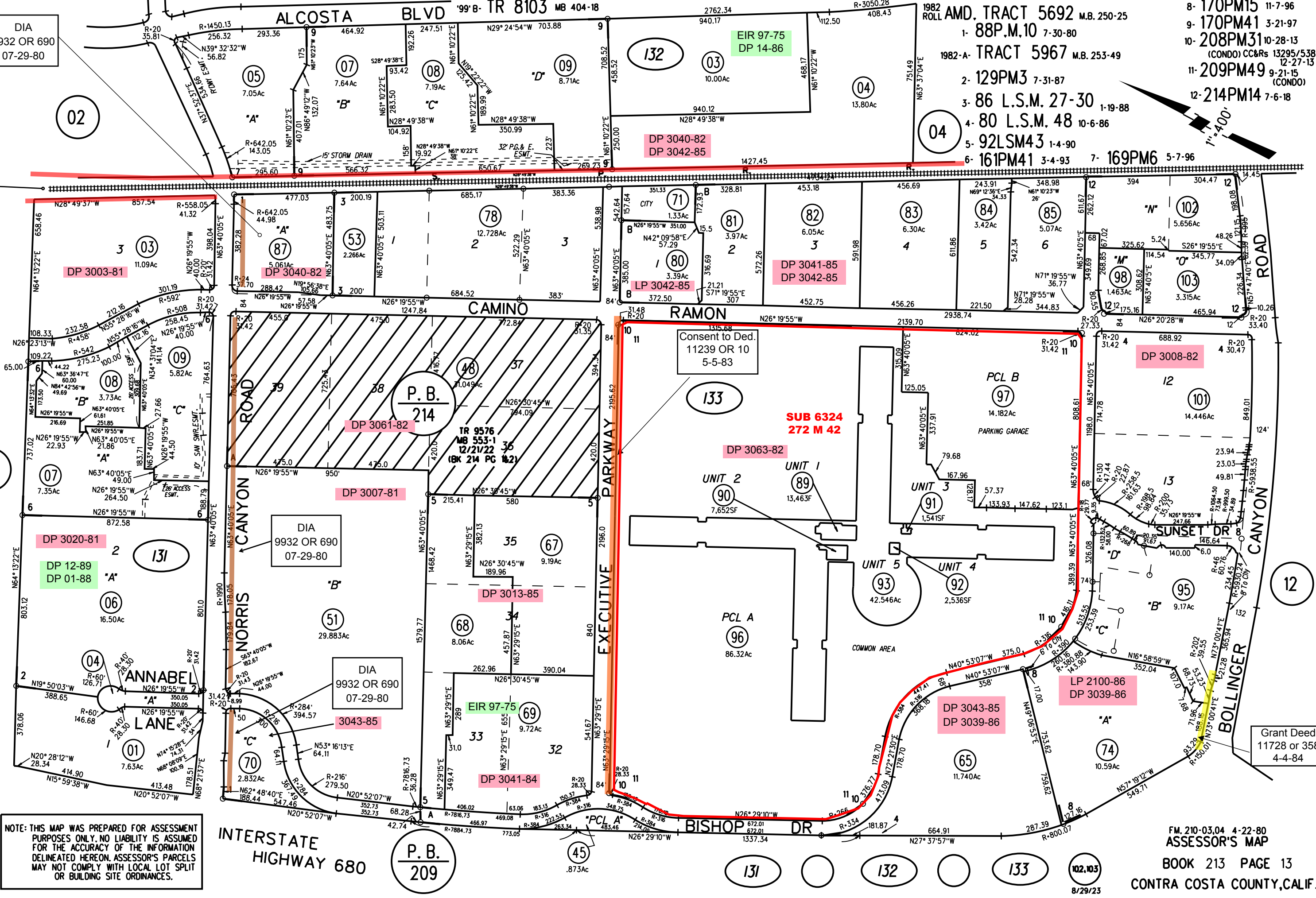


- 8- 170PM15 11-7-96
- 9- 170PM41 3-21-97
- 10- 208PM31 10-28-13
(CONDO) CC&Rs 13295/538
12-27-13
- 11- 209PM49 9-21-15
(CONDO)
- 12- 214PM14 7-6-18

- 1982 ROLL AMD. TRACT 5692 M.B. 250-25
- 1- 88P.M.10 7-30-80
- 1982-A- TRACT 5967 M.B. 253-49
- 2- 129PM3 7-31-87
- 3- 86 L.S.M. 27-30 1-19-88
- 4- 80 L.S.M. 48 10-6-86
- 5- 92LSM43 1-4-90
- 6- 161PM41 3-4-93 7- 169PM6 5-7-96



104 LSM 25



DIA
9932 OR 690
07-29-80

7.05Ac
05

7.64Ac
07

7.19Ac
08

8.71Ac
09

10.00Ac
03

13.80Ac
04

15.5Ac
081

3.97Ac
082

6.05Ac
083

3.42Ac
084

5.07Ac
085

5.656Ac
102

3.315Ac
103

3.315Ac
103

02

11.09Ac
03
DP 3003-81

2.266Ac
53
DP 3040-82

12.728Ac
78

3.97Ac
81

3.39Ac
80
LP 3042-85

6.05Ac
82
DP 3041-85
DP 3042-85

6.30Ac
83

3.42Ac
84

5.07Ac
85

5.656Ac
102

3.315Ac
103

3.315Ac
103

14.446Ac
101

14.446Ac
101

14.446Ac
101

14.446Ac
101

14.446Ac
101

5.82Ac
08
DP 3020-81
DP 12-89
DP 01-88

7.35Ac
07

5.82Ac
08

7.35Ac
07

7.35Ac
07

7.35Ac
07

7.35Ac
07

7.35Ac
07

7.35Ac
07

7.35Ac
07

7.35Ac
07

7.35Ac
07

7.35Ac
07

7.35Ac
07

7.35Ac
07

7.35Ac
07

7.35Ac
07

7.35Ac
07

7.35Ac
07

7.35Ac
07

7.35Ac
07

7.35Ac
07

7.35Ac
07

7.35Ac
07

7.35Ac
07

7.35Ac
07

7.35Ac
07

7.35Ac
07

7.35Ac
07

7.35Ac
07

7.35Ac
07

7.35Ac
07

7.35Ac
07

7.35Ac
07

16.50Ac
06

16.50Ac
06

16.50Ac
06

16.50Ac
06

16.50Ac
06

16.50Ac
06

16.50Ac
06

16.50Ac
06

16.50Ac
06

16.50Ac
06

16.50Ac
06

16.50Ac
06

16.50Ac
06

16.50Ac
06

16.50Ac
06

16.50Ac
06

16.50Ac
06

7.63Ac
01

7.63Ac
01

7.63Ac
01

7.63Ac
01

7.63Ac
01

7.63Ac
01

7.63Ac
01

7.63Ac
01

7.63Ac
01

7.63Ac
01

7.63Ac
01

7.63Ac
01

7.63Ac
01

7.63Ac
01

7.63Ac
01

7.63Ac
01

7.63Ac
01

2.832Ac
70

2.832Ac
70

2.832Ac
70

2.832Ac
70

2.832Ac
70

2.832Ac
70

2.832Ac
70

2.832Ac
70

2.832Ac
70

2.832Ac
70

2.832Ac
70

2.832Ac
70

2.832Ac
70

2.832Ac
70

2.832Ac
70

2.832Ac
70

2.832Ac
70

NOTE: THIS MAP WAS PREPARED FOR ASSESSMENT PURPOSES ONLY. NO LIABILITY IS ASSUMED FOR THE ACCURACY OF THE INFORMATION DELINEATED HEREON. ASSESSOR'S PARCELS MAY NOT COMPLY WITH LOCAL LOT SPLIT OR BUILDING SITE ORDINANCES.

INTERSTATE HIGHWAY 680

P.B. 209

045

131

132

133

102, 103

8/29/23