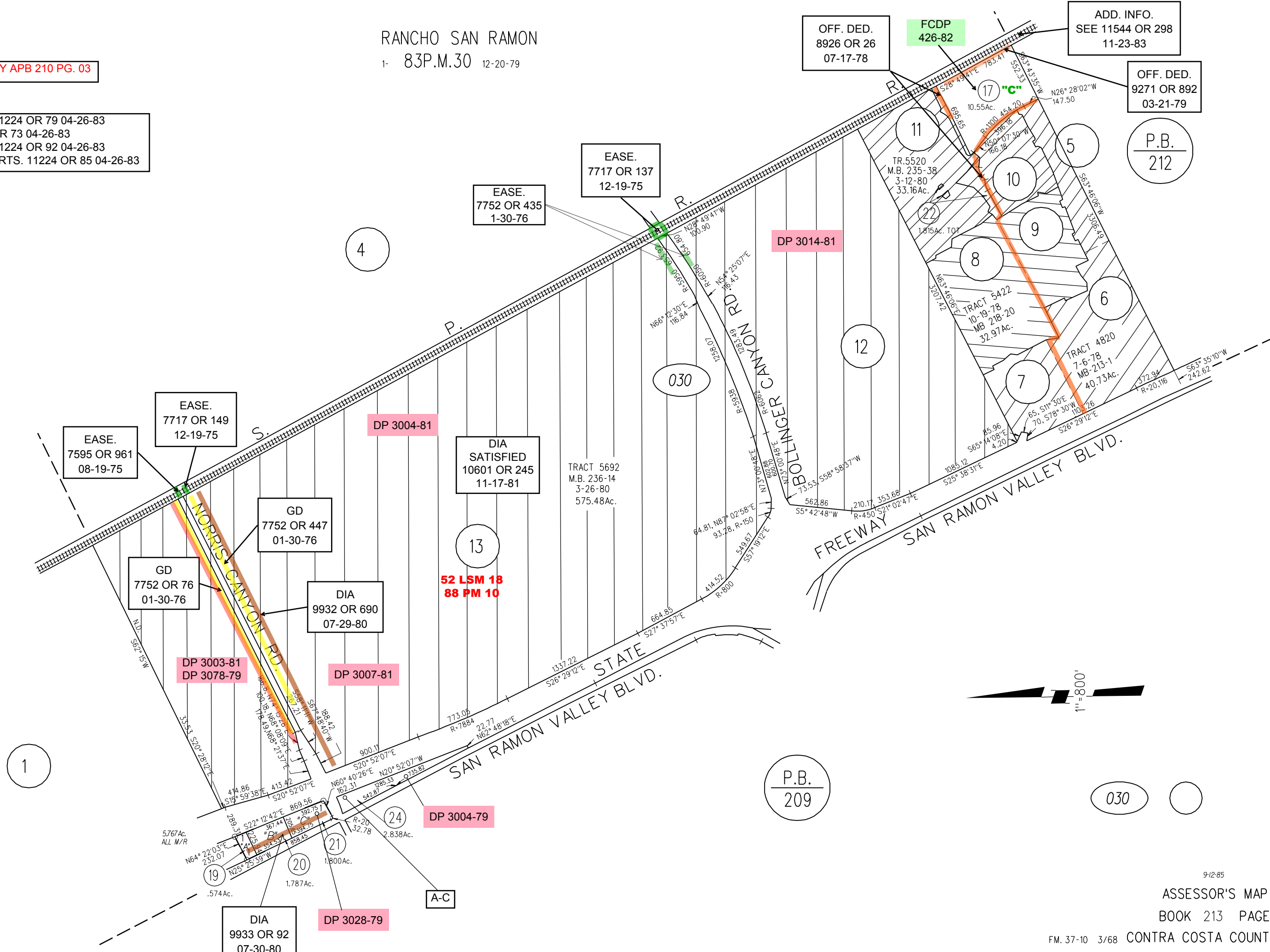


RANCHO SAN RAMON

1- 83P.M.30 12-20-79

FORMERLY APB 210 PG. 03

- A- OFF. DED. 11224 OR 79 04-26-83
DIA 11224 OR 73 04-26-83
- B- OFF. DED. 11224 OR 92 04-26-83
- C- REL. ABUT. RTS. 11224 OR 85 04-26-83



OFF. DED. 8926 OR 26 07-17-78

FCDP 426-82

ADD. INFO. SEE 11544 OR 298 11-23-83

OFF. DED. 9271 OR 892 03-21-79

P.B. 212

EASE. 7717 OR 137 12-19-75

EASE. 7752 OR 435 1-30-76

DP 3014-81

4

DIA SATISFIED 10601 OR 245 11-17-81

13

52 LSM 18 88 PM 10

EASE. 7717 OR 149 12-19-75

EASE. 7595 OR 961 08-19-75

GD 7752 OR 447 01-30-76

GD 7752 OR 76 01-30-76

DIA 9932 OR 690 07-29-80

DP 3007-81

DP 3003-81 DP 3078-79

1

DP 3004-79

P.B. 209

030

DIA 9933 OR 92 07-30-80

DP 3028-79

A-C

