

A- GD 7529 OR 423 06-09-75
 E- GD 7529 OR 418 06-09-75
 B- EASE. 7511 OR 404 05-20-75
 C- EASE. 7630 OR 323 09-24-75
 H- ABUT. RTS. 7759 OR 628 02-10-76
 I- OFF. DED. 9012 OR 492? 493? 09-15-72
 J- EASE. 7717 OR 143 12-19-75
 K- EASE. 7008 OR 840 07-30-73
 L- OFF. DED. 6359 OR 290 04-14-71
 M- GD 3969 OR 183 10-09-61
 N- 3969 OR 184 10-09-61
 O- OFF. DED. 7883 OR 764 06-01-76
 P- OFF. DED. 7894 OR 954 06-09-76
 Q- OFF. DED. 7904 OR 753 06-16-76
 R- DRAIN. REL. 7883 OR 861 06-01-76
 S- DRAIN. REL. 8813 OR 685 04-28-78
 T- GD 7598 OR 384 08-21-75
 U- GD 7728 OR 551 12-31-75
 V- GD 7878 OR 524 05-27-76
 X- GD 7442 OR 935 02-28-75
 Y- REL. ABUT. RTS. 10818 OR 923 06-18-82
 Z- EASE. 5769 OR 309 12-12-68

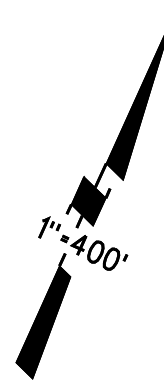
FORMERLY APB 210 PG. 02

AA- DP 3062-79
 BB- DP 3038-78
 CC- LP 2030-75, LP 202-65, LP 2169-78, LP 2060-80, LP 2004-82
 DD- DP 3071-78
 EE- LP 2133-78
 FF- LP 2102-75

RANCHO SAN RAMON

- 1-1975 36P.M.21 12-27-74 6- 77P.M.30 6-5-79
- 2-1974 56L.S.M.32 10-31-73 LP 380-72 7- 81 P.M. 26 9-27-79
- 3-1975 57L.S.M.6 6-7-74
- 4- 42P.M.32,33 & 34 1-22-76
- 5- 63 L.S.M. 12 9-29-77

P.B.
218

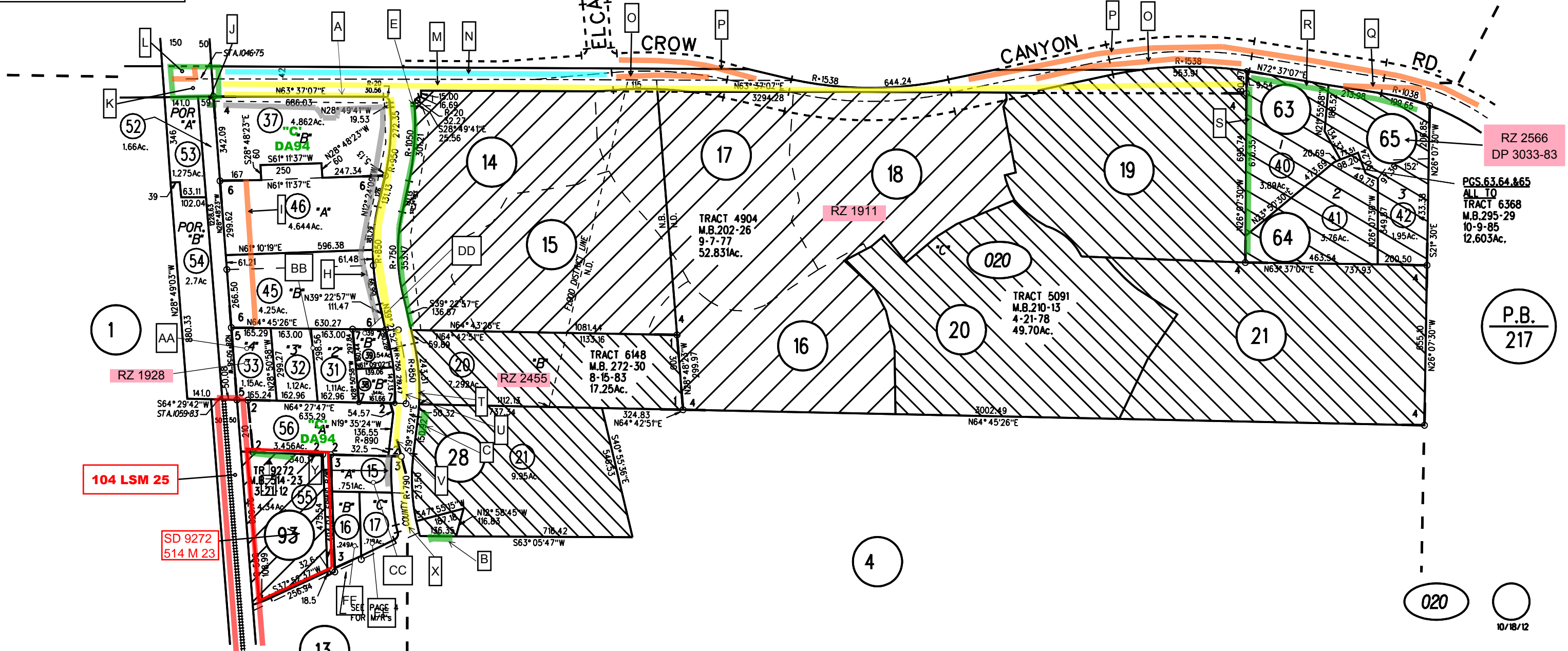


EL CAPITAN DR

CROW

CANYON

RD



RZ 1928

104 LSM 25

SD 9272
514 M 23

RZ 2566
DP 3033-83

PGS. 63, 64, & 65
ALL TO
TRACT 6368
M.B. 295-29
10-9-85
12.603Ac.

P.B.
217

020

10/18/12

NOTE: THIS MAP WAS PREPARED FOR ASSESSMENT PURPOSES ONLY. NO LIABILITY IS ASSUMED FOR THE ACCURACY OF THE INFORMATION DELINEATED HEREON. ASSESSOR'S PARCELS MAY NOT COMPLY WITH LOCAL LOT SPLIT OR BUILDING SITE ORDINANCES.