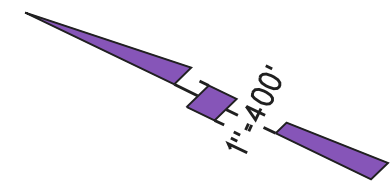


RANCHO SAN RAMON (NORRIS)

1- 2PM17 12/7/67

2- 2PM18 12/7/67



NOTE: THIS MAP WAS PREPARED FOR ASSESSMENT PURPOSES ONLY. NO LIABILITY IS ASSUMED FOR THE ACCURACY OF THE INFORMATION DELINEATED HEREON. ASSESSOR'S PARCELS MAY NOT COMPLY WITH LOCAL LOT SPLIT OR BUILDING SITE ORDINANCES.

OFF. DED.
5844 OR 10
04-02-69

GD
8557 OR 295
10-20-77

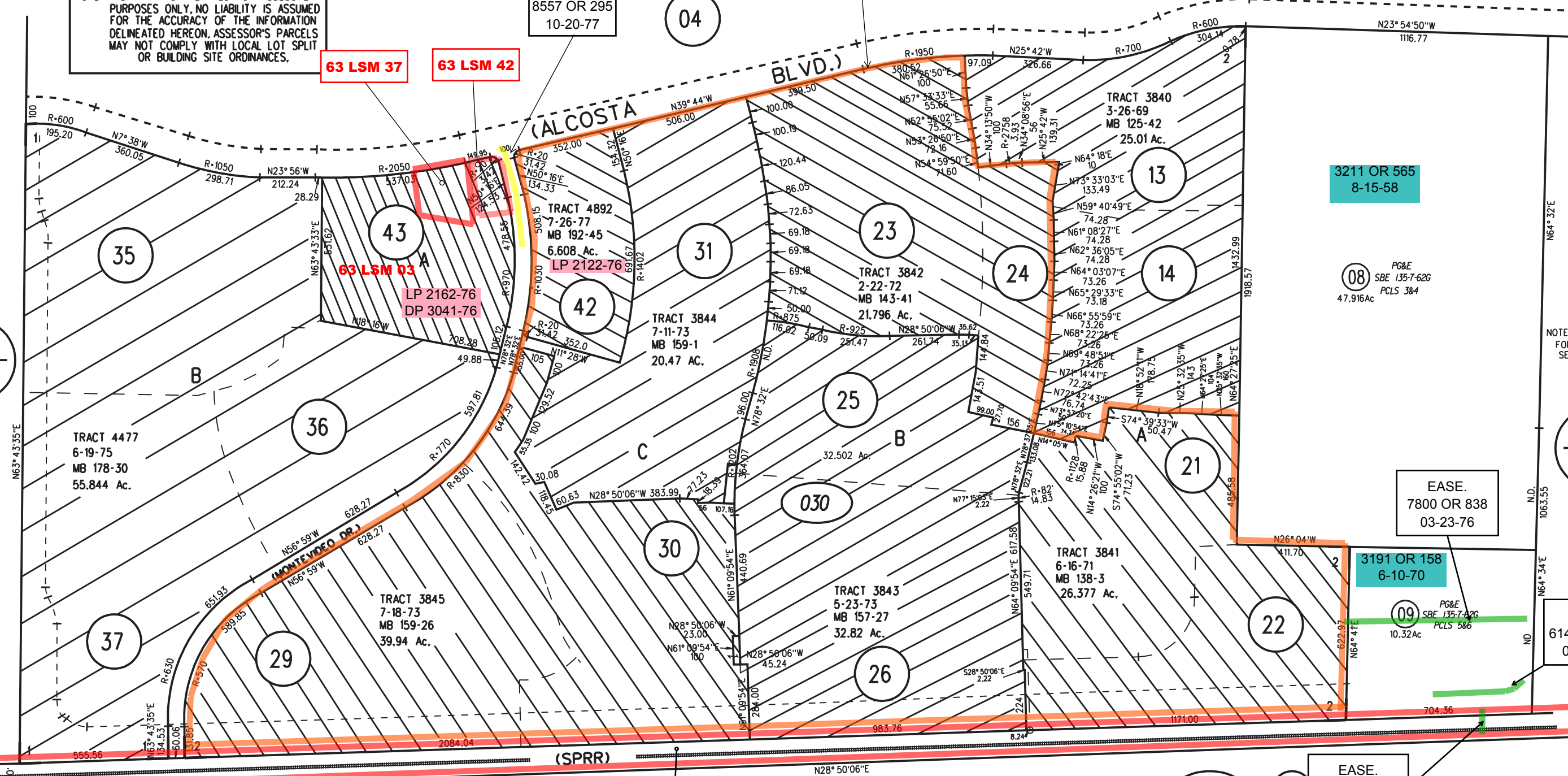
63 LSM 37

63 LSM 42

63 LSM 03

LP 2162-76
DP 3041-76

104 LSM 25



3211 OR 565
8-15-58

PG&E
SBE 135-7-62G
PCLS 384
47.916Ac

EASE.
7800 OR 838
03-23-76

3191 OR 158
6-10-70

PG&E
SBE 135-7-62G
PCLS 586
10.32Ac

EASE.
6146 OR 158
06-10-70

EASE.
6140 OR 563
04-30-70

FM. 210-8 4-7-66
ASSESSOR'S MAP

BOOK 212 PAGE 03

CONTRA COSTA COUNTY, CALIF.

Sanborn Date : 30/04/1999