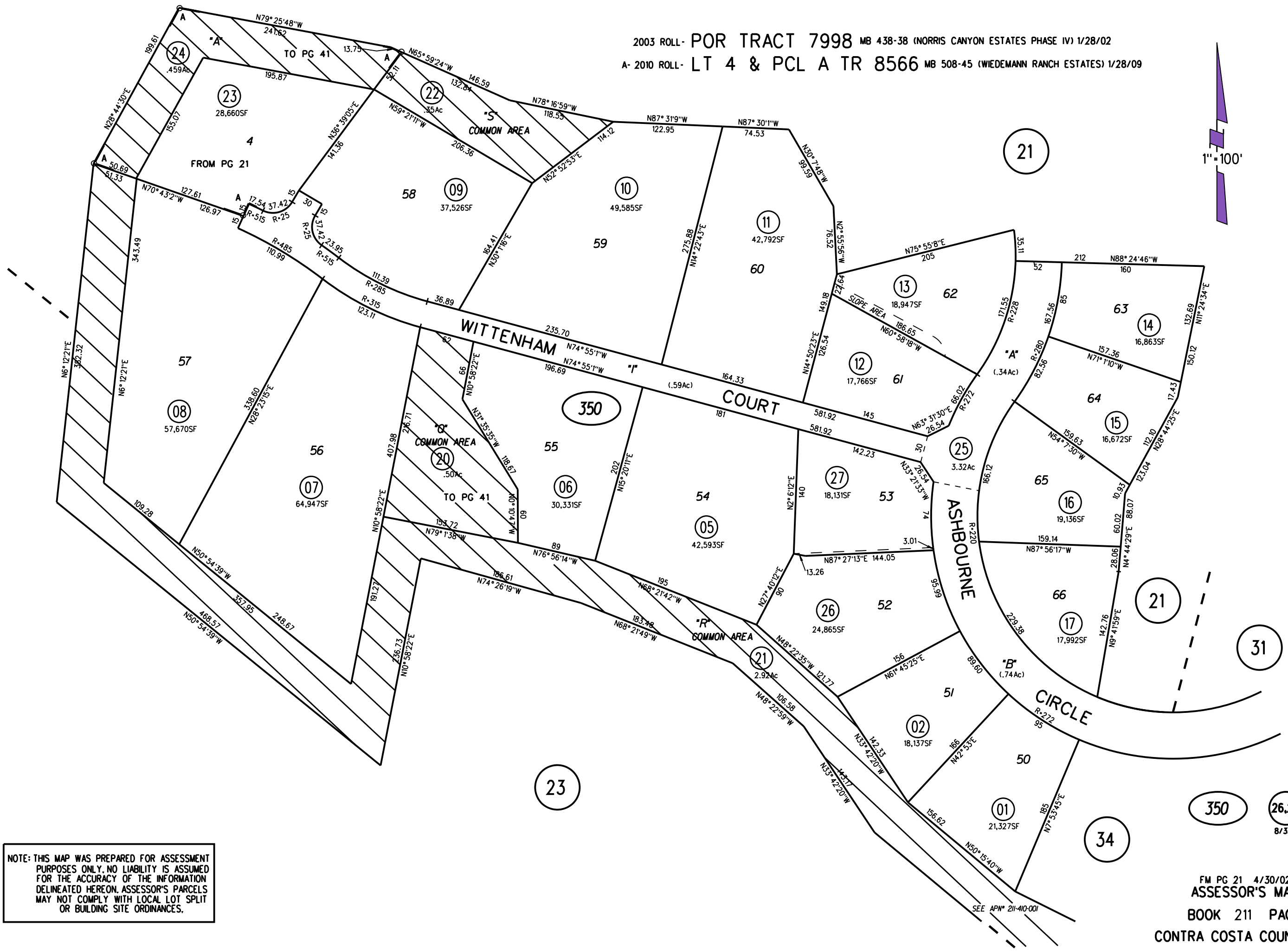


2003 ROLL - POR TRACT 7998 MB 438-38 (NORRIS CANYON ESTATES PHASE IV) 1/28/02  
A - 2010 ROLL - LT 4 & PCL A TR 8566 MB 508-45 (WIEDEMANN RANCH ESTATES) 1/28/09

1" = 100'



NOTE: THIS MAP WAS PREPARED FOR ASSESSMENT PURPOSES ONLY. NO LIABILITY IS ASSUMED FOR THE ACCURACY OF THE INFORMATION DELINEATED HEREON. ASSESSOR'S PARCELS MAY NOT COMPLY WITH LOCAL LOT SPLIT OR BUILDING SITE ORDINANCES.