

RANCHO SAN RAMON
(NORRIS)

A-1978 ROLL - TRACT 4943 (WESTSIDE) MB 196-34
1- POR 166PM40 6-22-95

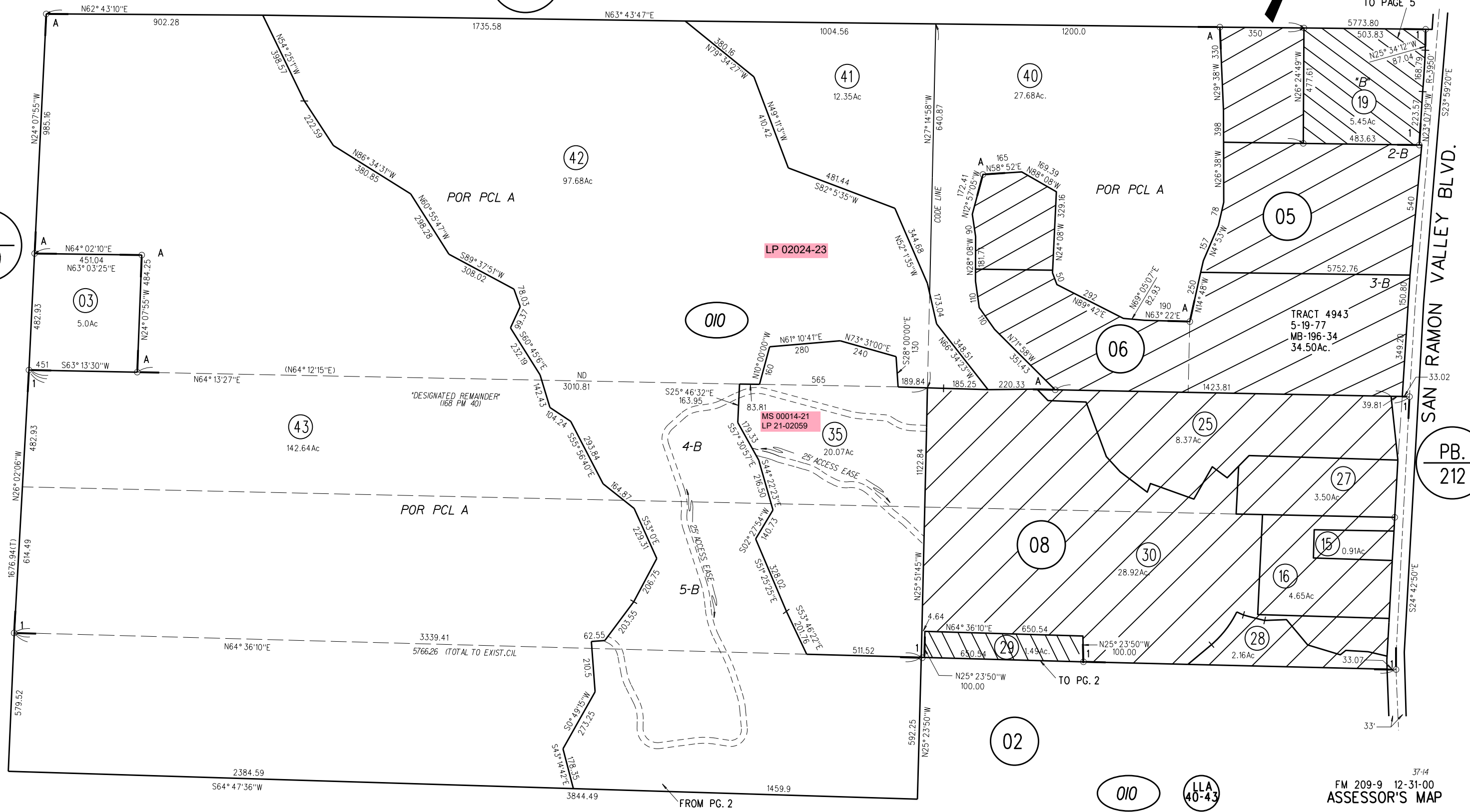
NOTE: THIS MAP WAS PREPARED FOR ASSESSMENT PURPOSES ONLY. NO LIABILITY IS ASSUMED FOR THE ACCURACY OF THE INFORMATION DELINEATED HEREON. ASSESSOR'S PARCELS MAY NOT COMPLY WITH LOCAL LOT SPLIT OR BUILDING SITE ORDINANCES.

PB.
209

1" = 400'

PB.
209

PB.
212



TO PAGE 5

TRACT 4943
5-19-77
MB-196-34
34.50Ac.

TO PG. 2

FROM PG. 2

OIO
LLA
40-43
4/11/14