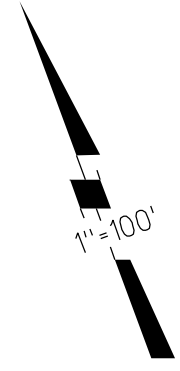


1981 ROLL - TRACT 5815 (TWIN CREEKS HILLS-UNIT 4) M.B. 243-26

1-1985 ROLL - 75L.S.M.5 7-13-84



OFF. DED.
10179 OR 729
01-26-81

88

POR. OF "A"

20

16.11Ac.

690

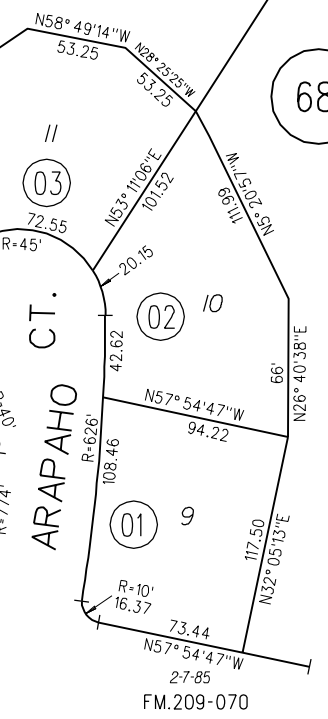
68

70

71

72

690



ASSESSOR'S MAP
BOOK 209 PAGE 69
CONTRA COSTA COUNTY, CALIF.