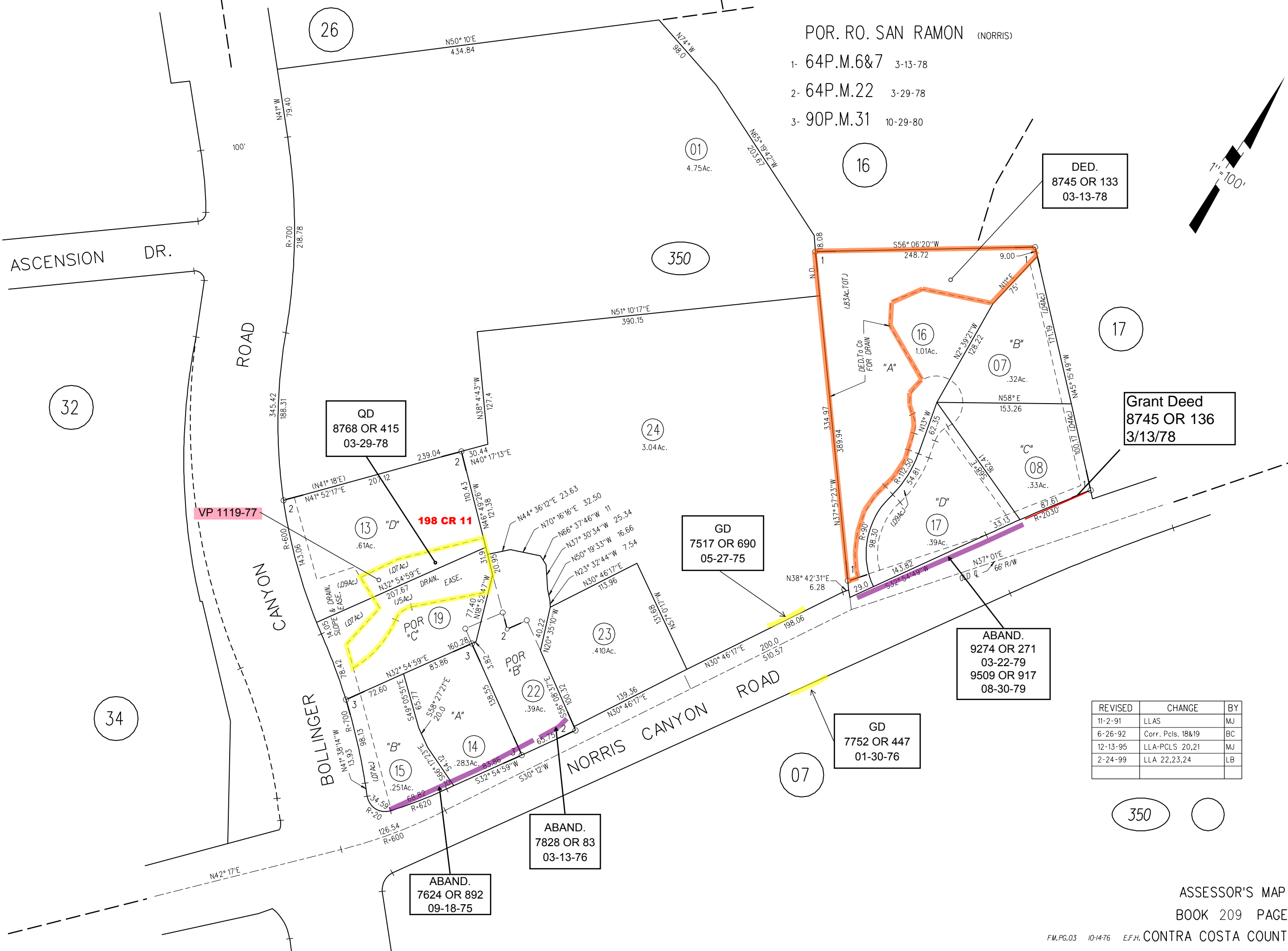
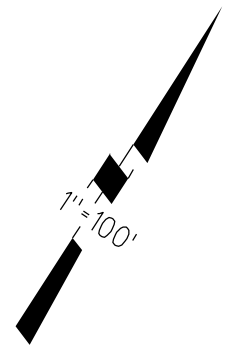


POR. RO. SAN RAMON (NORRIS)

- 1- 64P.M.6&7 3-13-78
- 2- 64P.M.22 3-29-78
- 3- 90P.M.31 10-29-80



DED.  
8745 OR 133  
03-13-78

QD  
8768 OR 415  
03-29-78

Grant Deed  
8745 OR 136  
3/13/78

GD  
7517 OR 690  
05-27-75

ABAND.  
9274 OR 271  
03-22-79  
9509 OR 917  
08-30-79

GD  
7752 OR 447  
01-30-76

ABAND.  
7828 OR 83  
03-13-76

ABAND.  
7624 OR 892  
09-18-75

REVISED	CHANGE	BY
11-2-91	LLAS	MJ
6-26-92	Corr. Pcls. 18&19	BC
12-13-95	LLA-PCLS 20,21	MJ
2-24-99	LLA 22,23,24	LB

350