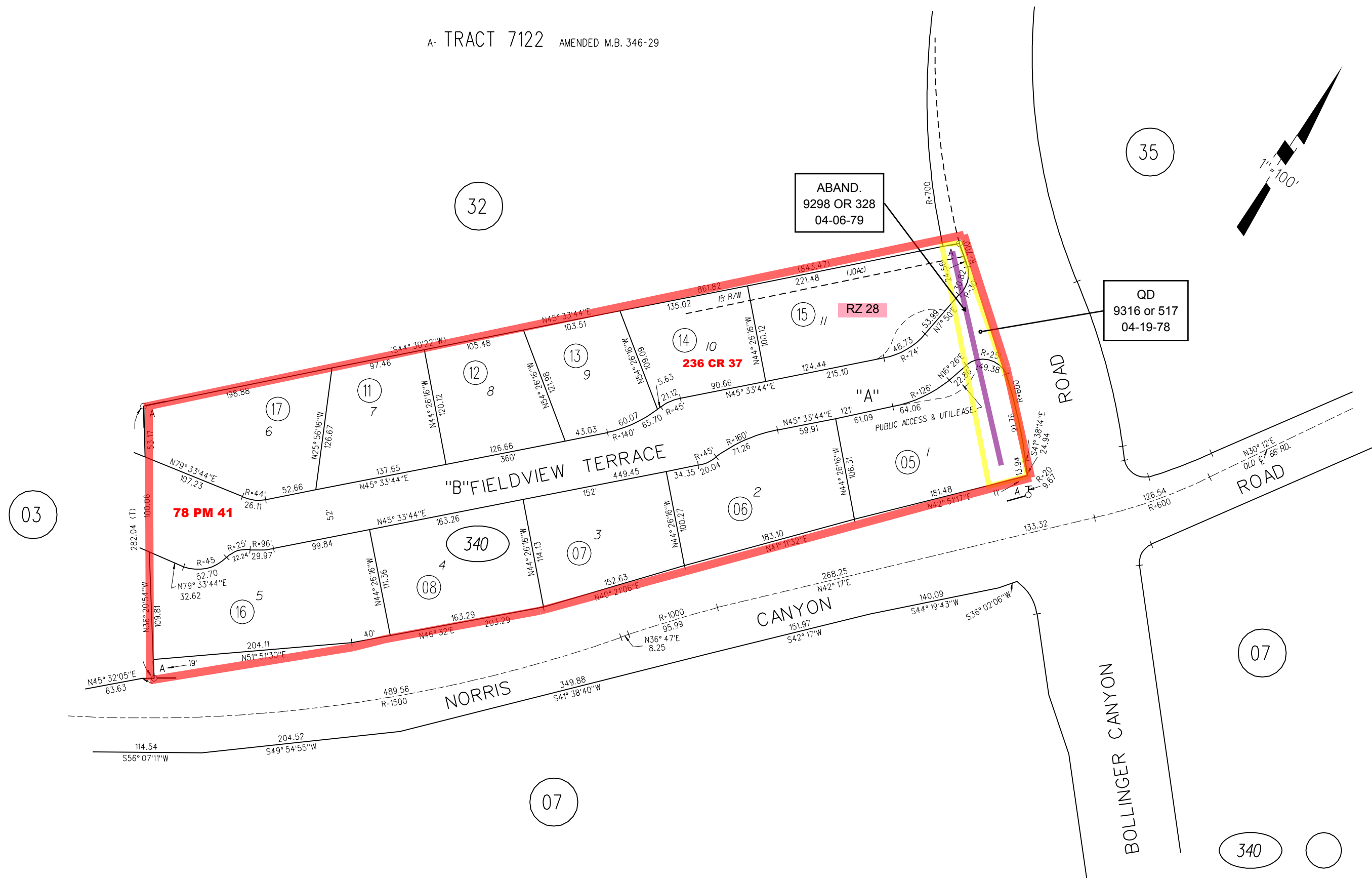


POR. RO. SAN RAMON (NORRIS)

A- TRACT 7122 AMENDED M.B. 346-29



ABAND.  
9298 OR 328  
04-06-79

QD  
9316 or 517  
04-19-78

03

32

35

07

07

340

340

10/12/90

ASSESSOR'S MAP

BOOK 209 PAGE 34