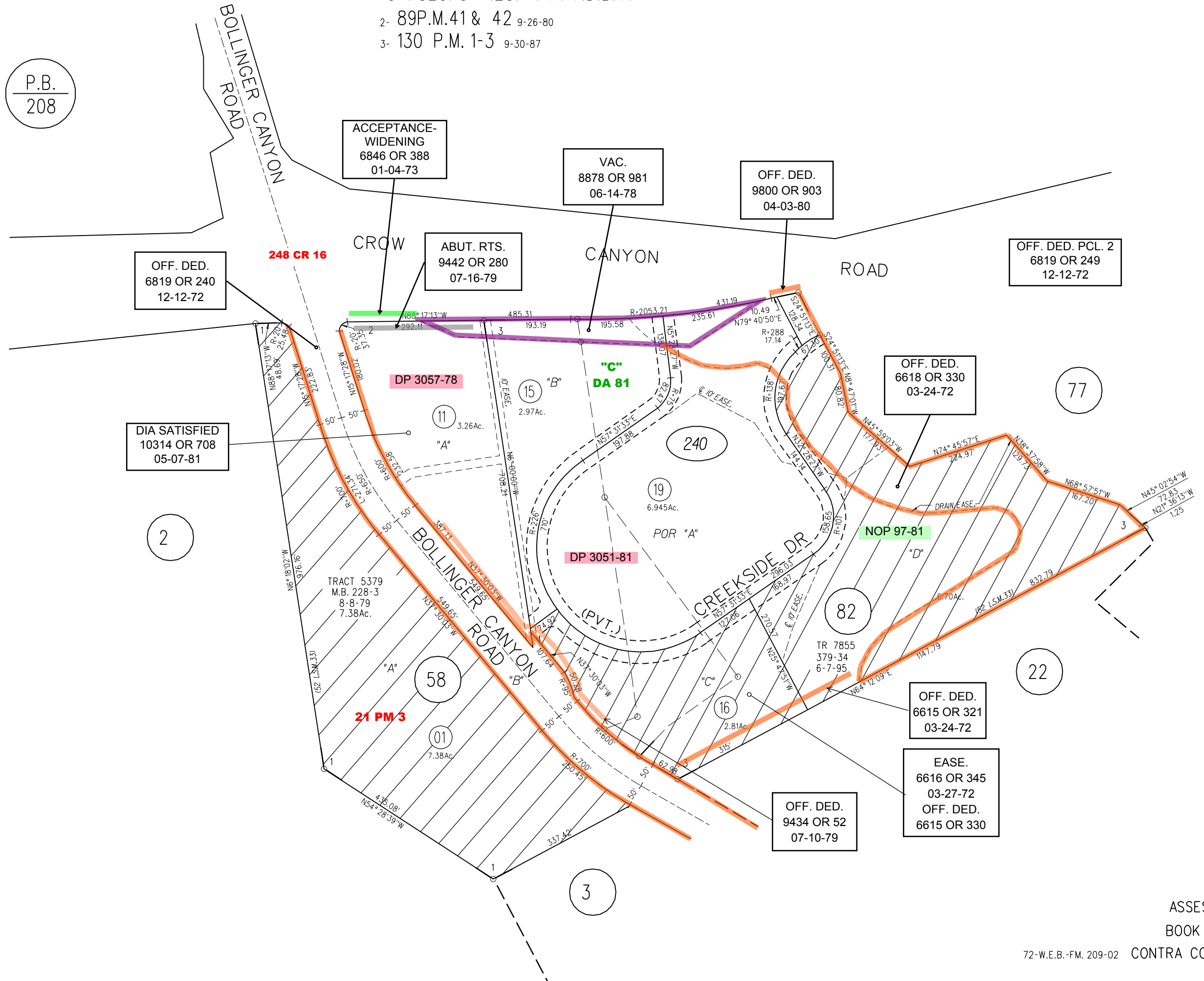


POR. SEC. 8 T.2S. R.1W. M.D.B.M.

2- 89P.M.41 & 42 9-26-80

3- 130 P.M. 1-3 9-30-87

P.B.
208



77

240

19
6.945Ac.
POR "A"

82

22

3

2

58

01
7.38Ac.

16
2.81Ac.

1-25-96
ASSESSOR'S MAP

BOOK 209 PAGE 24

72-W.E.B.-FM. 209-02 CONTRA COSTA COUNTY, CALIF.